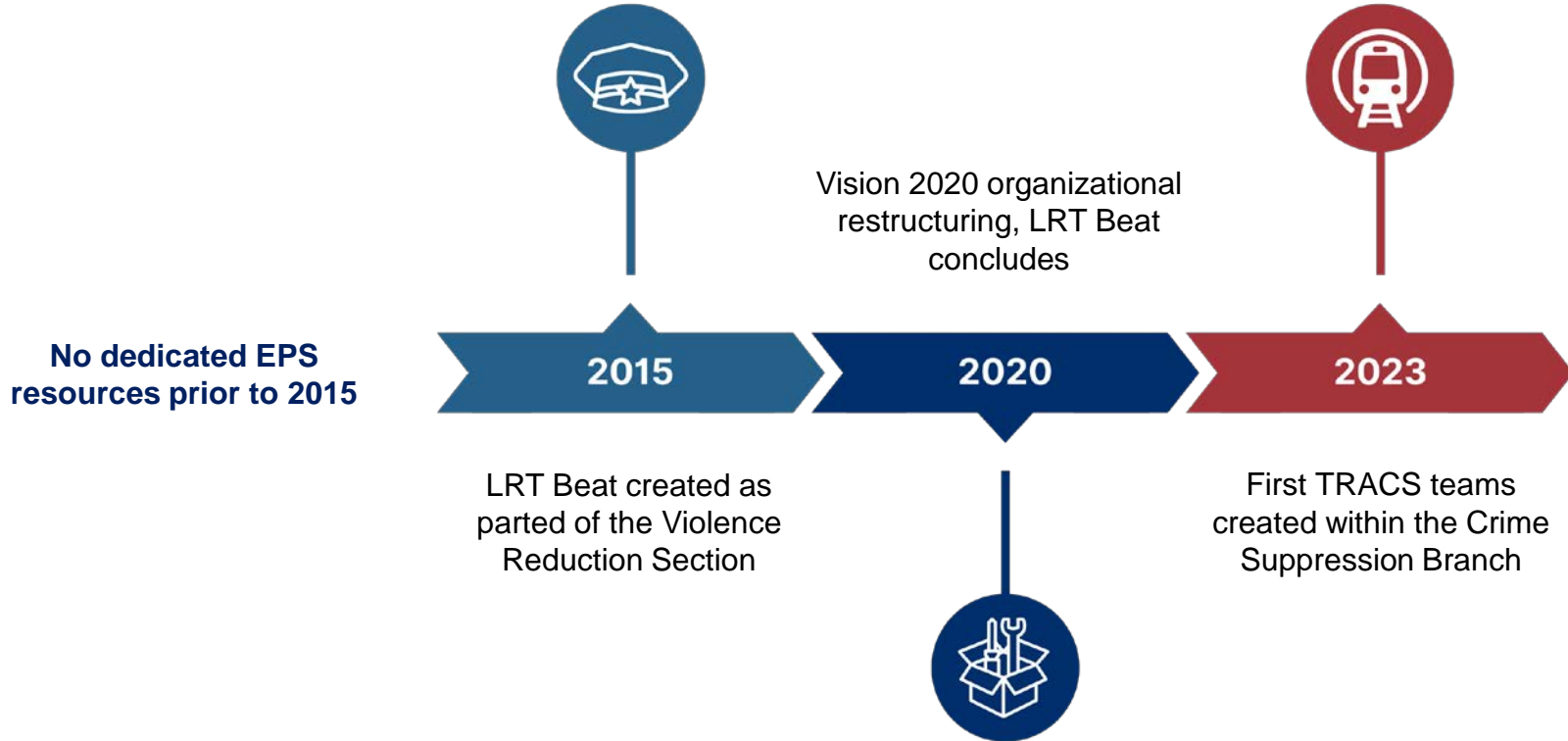


Transit Enforcement Crime Suppression Branch

June 7, 2024



History of Police in Transit



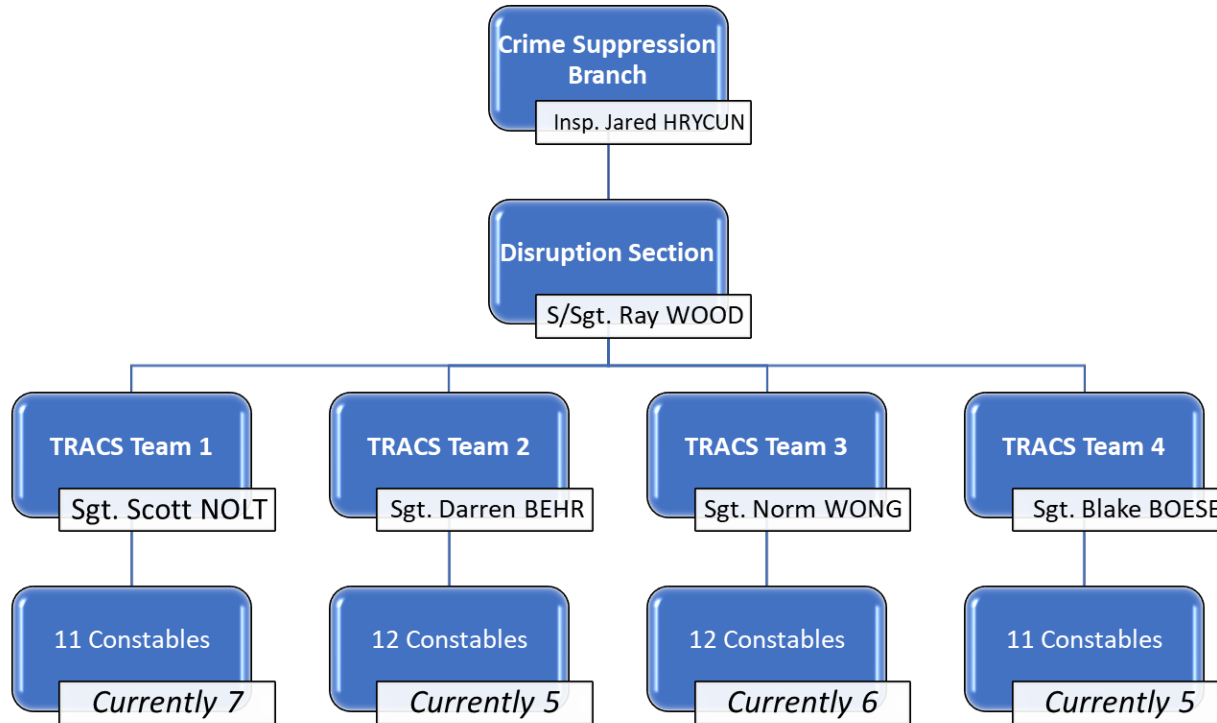
Who is TRACS?



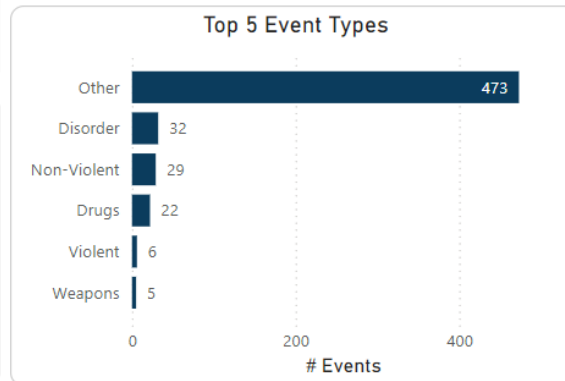
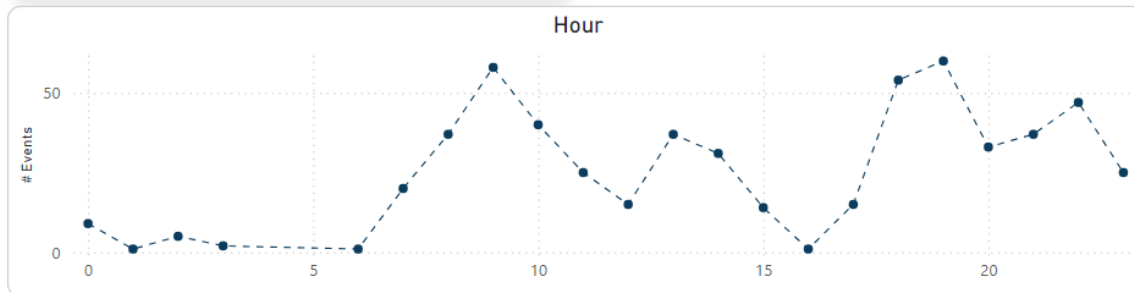
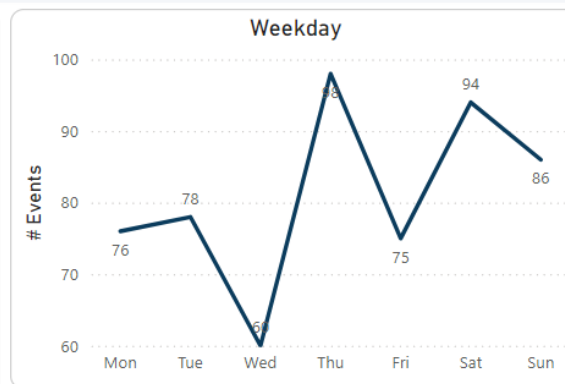
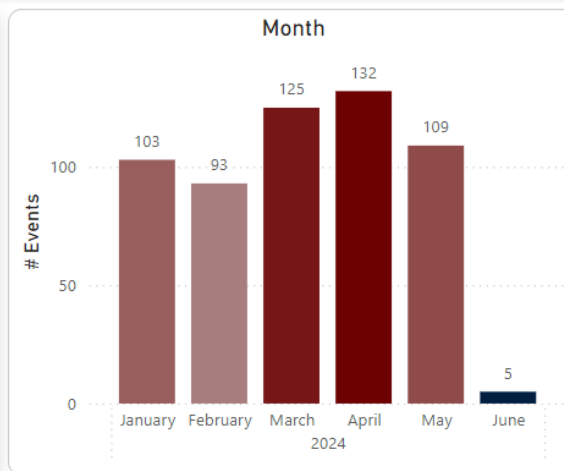
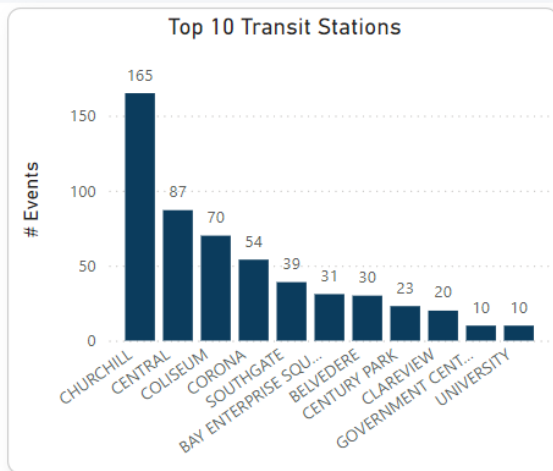
In collaboration with our community partners, the Edmonton Transit Service and the City of Edmonton, the TRACS Teams will provide a measured and balanced response to address crime and disorder issues in and around ETS facilities.

Structure of the Unit

Current and Future Staffing



The Transit Centre Event Dashboard



The Transit Centre Event Dashboard

627

Events - Current Year

301

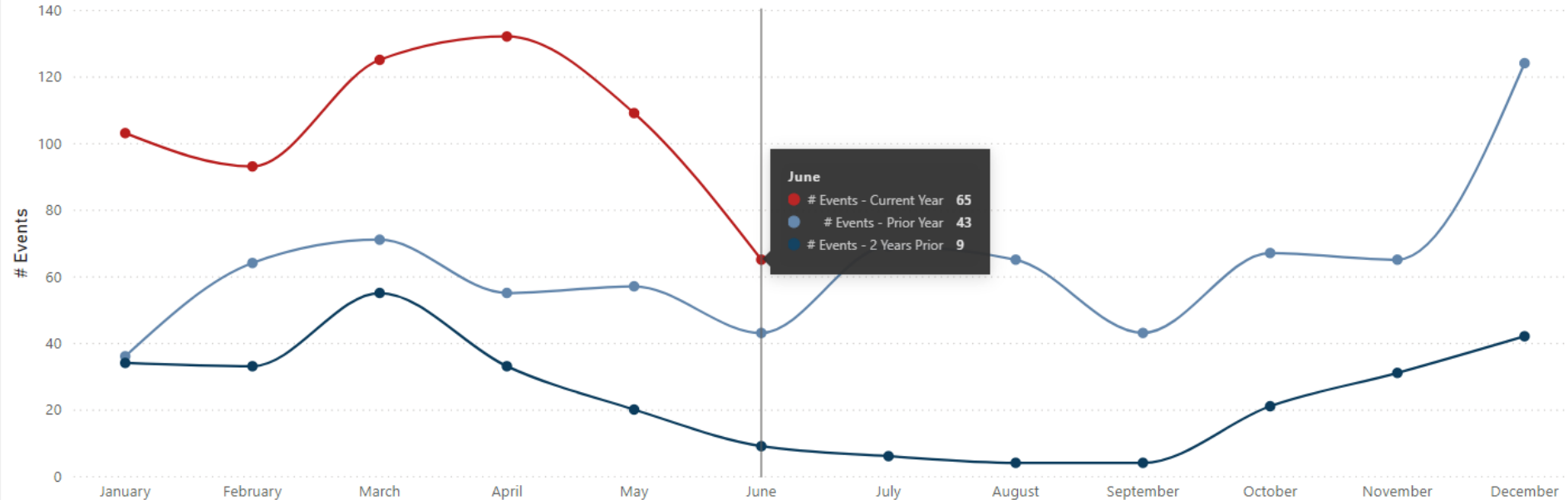
Events - Prior Year To Date

108.31%

% Change

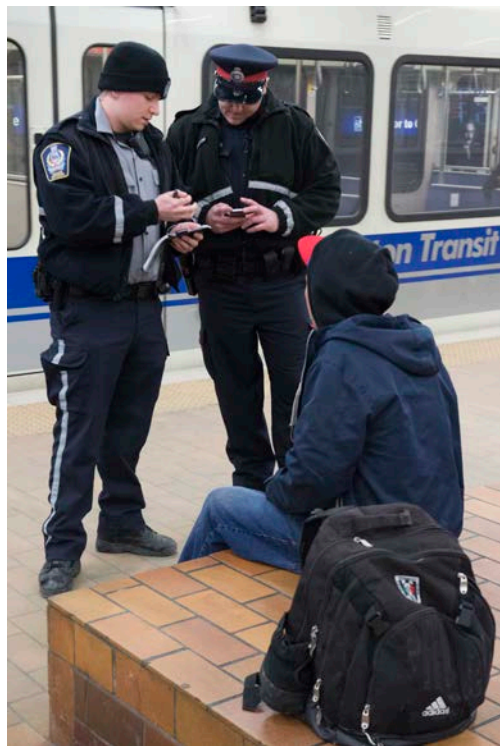
Transit 3 Year Trends

● # Events - Current Year ● # Events - Prior Year ● # Events - 2 Years Prior



*As of June 18, 2024

The Transit Centre Event Dashboard



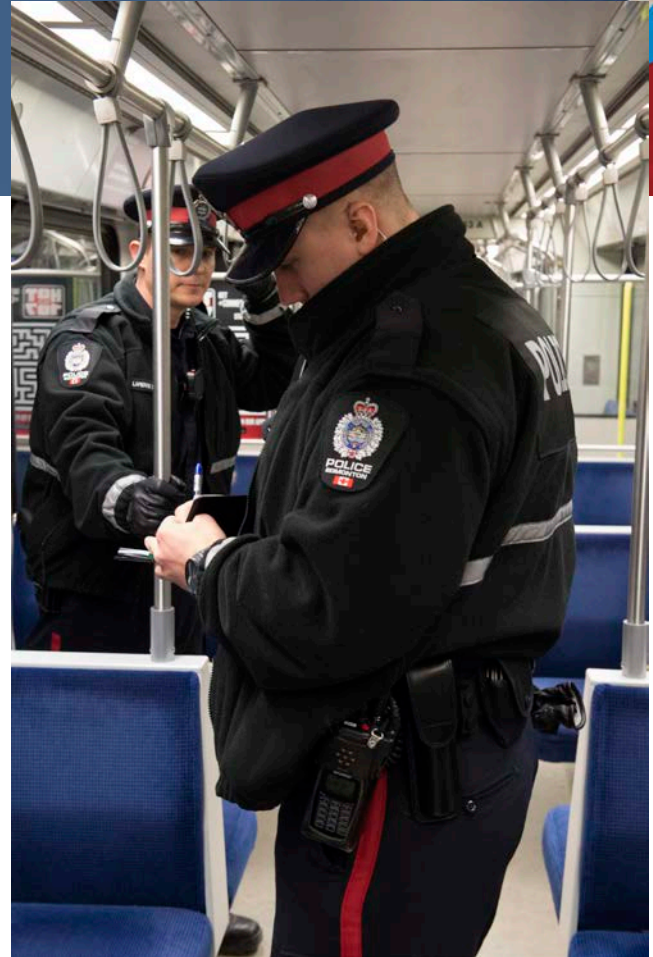
Access to real-time data is important for deploying resources to the right place at the right time

Enforcement

Enforcement is the genesis for proactive police work

The simple act of enforcement (such as proof of payment checks) often provides the results we see from TRACS, which can include:

- Trespassing
- Arrest Warrants
- Possession of Weapons
- Drug Possession



What does TRACS enforcement look like?



Enforcement starts with a person contact, generally due to proactive work or an on-view violation

Year-to-date, TRACS officers have:

- Made over **17,000** person contacts
- Executed over **3,000** outstanding arrest warrants
- Made over **1,000** arrests
- Laid over **300** charges
- Issued over **450** tickets

TRACS and Community Well-being

Police are empowered to use their discretion

As with all enforcement, police use discretion which often results in a referral to services like:

- Community Outreach Transit Teams (COTT)
- Winter Warming Shuttle
- Emergency shelter
- Navigation and Support Centre



TRACS and the Transit Peace Officers



- TRACS members work within the same transit spaces as ETS Transit Peace Officers (TPO).
- Some shift schedules mirror each other ensuring that the same teams are working at the same times.
- Both often conduct coordinated enforcement activities in the same spaces and are effective when doing so (lock-ups, projects, etc).
- TPOs are limited by their Peace Officer appointment, creating a duplication of work requiring police response.

TRACS and the tiered deployment model



We are working towards combined EPS and ETS data to:

- Better understand crime severity at different locations
- Identify the most appropriate authority for response
- Use resources more efficiently



Successes



Increased police presence on transit

officers specifically assigned to transit 7 days a week, 21 hours a day.



Improved problem identification

The Transit Center Dashboard allows TRACS officers to take a more active part in identifying problem areas that require response.



Positive citizen feedback

Citizens routinely approach TRACS members to voice appreciation for their presence in the transit space.

Challenges



Fully staffing the teams remains a challenge.



Work and deployment with TPOs can be more strategic and better aligned to leverage each other's strengths



Gaps in information sharing between TPOs and EPS. Lack of access to real-time data.



Continued requests to support large scale events including the NHL Playoffs and Protest events.

Questions

