

Healthy Streets Operation Centre

Creating Safer Communities with
Multidisciplinary Community Safety
Teams



Edmonton



EDMONTON
POLICE
SERVICE

Multidisciplinary Approach to Solutions

- No One Organization can Solve these Complex Community Safety Concerns Alone.
- Engage Subject Matter Experts within Community Safety Landscape.
- Phased Approach to Engaging Partner Organizations

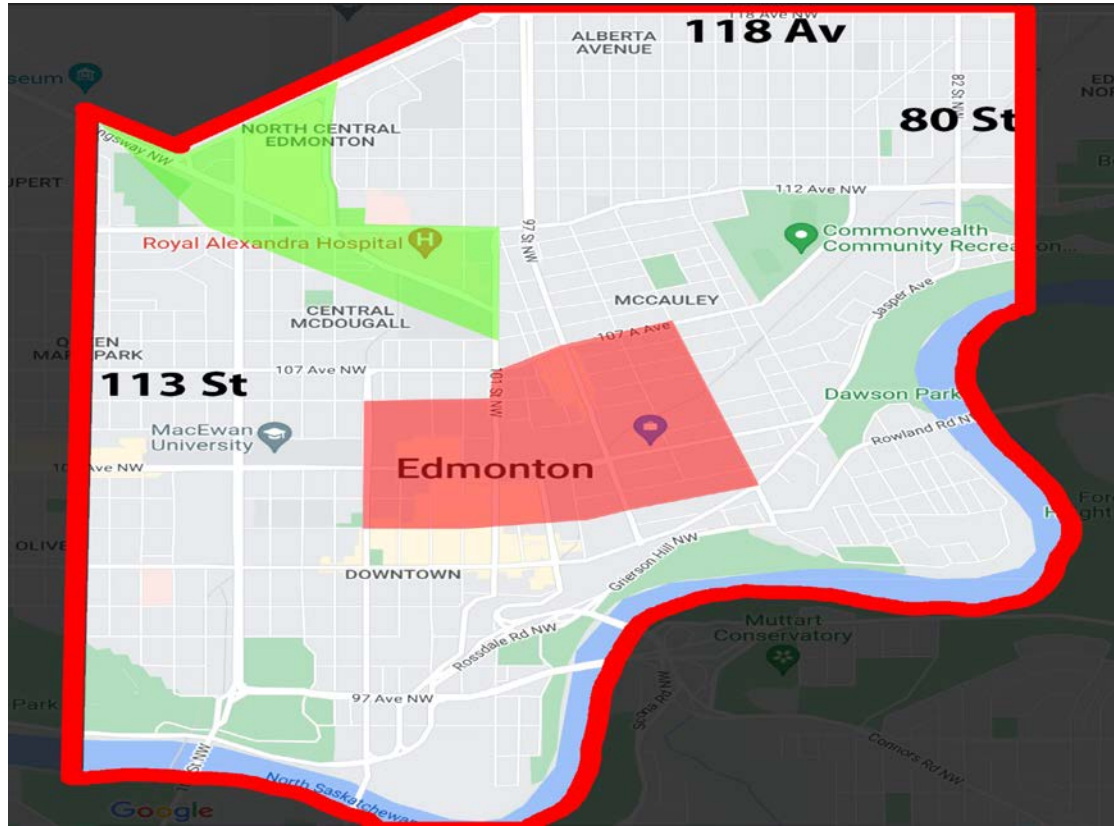
Partner Organizations:

Community Safety Team – Phased Approach



- Phase 1 – Community Safety Teams deployed with phase 1 partners
- Phase 2 – *Initiated* Community Social Service organizations to join multidisciplinary approach to community solutions.

Geographical Boundaries



Community Safety Teams will have an initial geographical focus on micro locations within the following neighbours and areas:

Neighbourhoods:

- Alberta Avenue
- Boyle McCauley
- Chinatown
- Downtown

Geographical Boundaries:

- 118 Avenue to 97 Avenue
- 113 Street – 80 Street

Micro Locations:

- Kingsway Ave Triangle
- Chinatown
- Downtown Core

Community Safety Zone

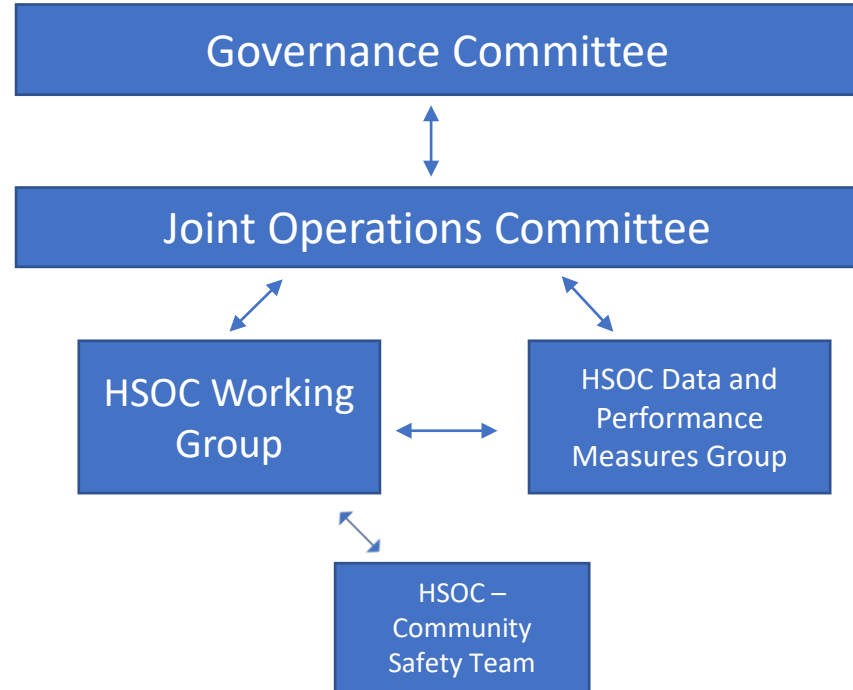


Multidisciplinary Approach to Solutions

Authorities = Wellness Intervention Opportunities

- Partner Organizations have separate and distinct legislated authorities which affords the creation of various community safety solutions to identified problems.
- Community Safety solutions are human centered and developed to increase wellness and reduce victimization.

Collective Impact Governance & Decision Making



Community Safety Team Framework

Healthy Streets Operations Centre - Community Safety Team Framework

Edmonton Police Service

18 FTE

Team 1
1 – Sergeant
8 – Constables

Team 2
1 – Sergeant
8 – Constables

City of Edmonton

22 FTE

2 – Supervisor
8 – CPO

2 – CSL

Scale to 22 FTE
Q3 2023

Edmonton Fire Rescue Services

3 FTE

IN PROGRESS – APR 2023

1 – Fire Investigator
1 – Fire Fighter
1- Data Analyst

Alberta Health Services EMS

2 FTE

2 – Advanced Care Paramedic

As Needed Considerations

RESOURCES:

- HELP
- WADU
- GST
- Youth Diversion

Potential Future Partners:

- Government of Alberta
- Bent Arrow
- Homeward Trust
- Additional Social Service Agencies

Coverage

Requirement: 2 Teams - Rotating Schedule
Monday to Thursday – 0700 hrs - 1700 hrs
Tuesday to Friday – 1400 hrs - 0000 hrs

Scale to 4 Teams Q2 2023 – 22 hr. / 7 day coverage

Communication Strategy

HSOC - Crime Suppression Team Sheriff / EPS Framework

HSOC – CST Team 1

1 – EPS Sergeant
6 – EPS Constables
1 – CPO Sergeant
4 – CPO
1 – EMS
1 – Safety Liaison
1 – FTE EFRS

HSOC – CST Team 2

1 – Sergeant
6 – Constables
1 – CPO Sergeant
4 – CPO
1 – EMS
1 – Safety Liaison
1 – FTE EFRS

HSOC – CST Team 3

1 – EPS Sergeant
6 – EPS Constables
1 – Sheriff Sergeant
5 – Sheriffs

HSOC – CST Team 4

1 – EPS Sergeant
4 – EPS Constables
1 – Sheriff Sergeant
5 – Sheriffs

Rotating Schedule

7 Days – 4 on / 4 off (2 day shifts / 2 afternoon shifts)

Days - 0700 hrs - 1815 hrs

Afternoons – 1500 hrs - 0300 hrs

How are we going to do it?

Create Safer Communities

- Highly Visibility and Community Engagement

Evidence Based Methodology for Problem Solving

- Risk Terrain Modeling (RTM)
- Problem Oriented Policing
- Location Based Policing – Hot Spot Policing
- Pulling Levers – Connecting to Resources

Evidence Based – Data Driven Solutions

- **Risk Terrain Modeling** identify risk (problems) within locations - Greater Downtown Edmonton.
- Where to go, What to focus on, and Why it is happening.
- Measured impact of preventing victimization and creating safer communities.



Evaluation

- Immediate, Intermediate and Long Term Outcomes
- Increased Safety and Perception of Safety
- Decreased Harm Severity
- Collaborative Community Engagements
- Increased Use of Social Supports

Early Indications of Success

- Data Trends within HSOC Community Safety Zones
- 3247 on view proactive engagements (reducing public generated complaints to police)
- 18,281 community contacts and stakeholder engagements
- 113 Ambulances Deferred – 170 individual patients assessed

Average Total Crime Severity within HSOC Chinatown / Kingsway

Average Total Severity



Early Indications of Success

Qualitative Perspectives

- Community
- Partners

Questions?



Edmonton



EDMONTON
POLICE
SERVICE