

10 Squad Deployment Model & Branch boundaries

Edmonton Police Commission

22Oct20

Superintendent Derek McIntyre

EDMONTON
POLICE
SERVICE

Scope

The scope of the work outlined in this presentation applies solely to Patrol Squads.

Patrol squad: a work unit geographically assigned in one of the 6 Patrol Branches. Each squad has one sergeant and a compliment of constables.

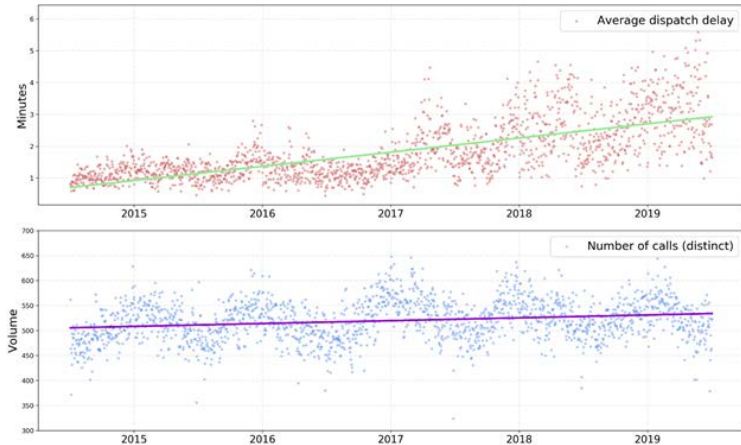
Call for service: attendance by the police to an event reported by the public to the EPS. The analysis outlined does not include events police encounter proactively.

Not in scope: This analysis does not include the workload of proactive units such as Beat teams, Disruption teams, Community Safety Teams, Traffic Enforcement Unit etc.

Why review squad model and boundaries?

Workload

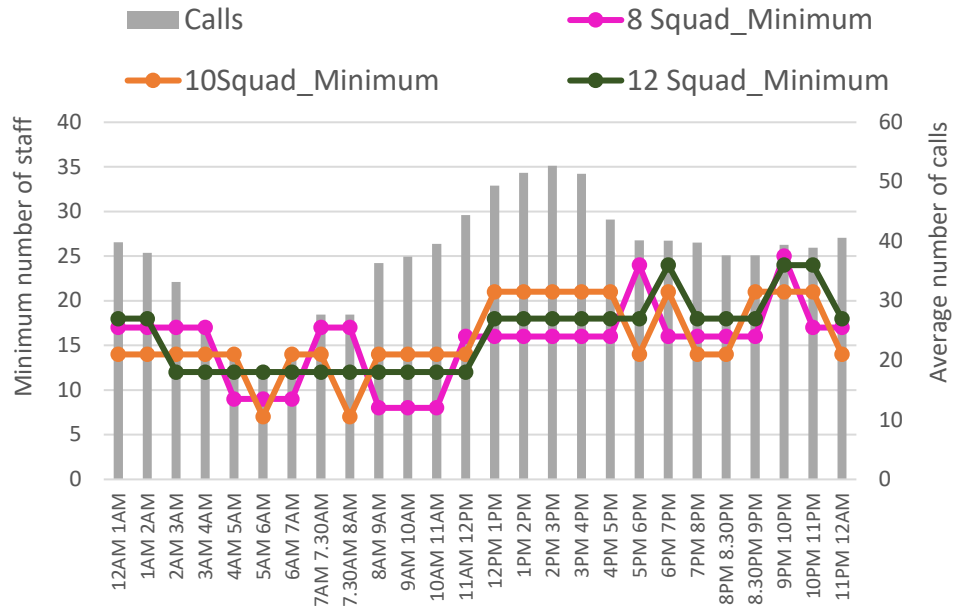
- Disparity in workload
- Same resource allocation
- Long dispatch wait times



Wellness

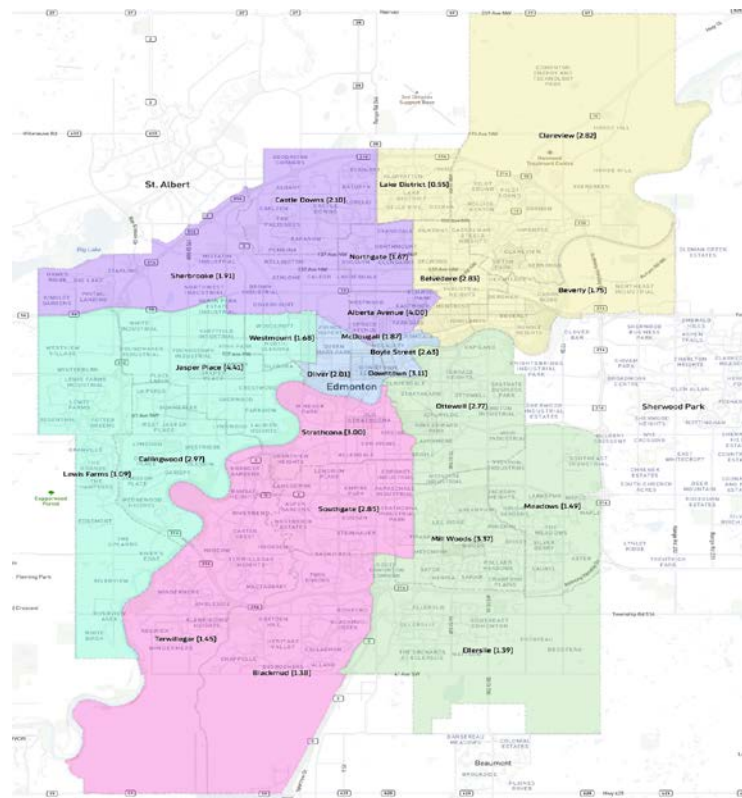
- 6 Branches, 2 squad models (8 squad & 10 squad)
- 3 different minimum staffing levels
- All rotating shifts
- Inequity in shift relief & opportunities

Patrol Squad Modelling

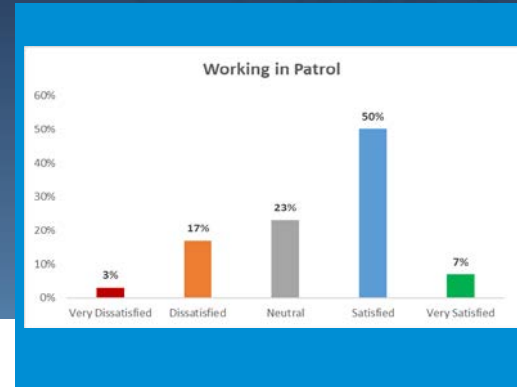


Patrol Branch Boundaries

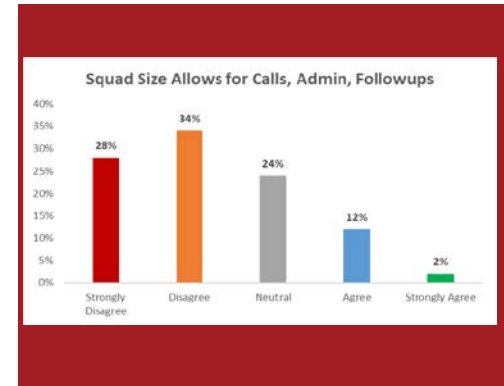
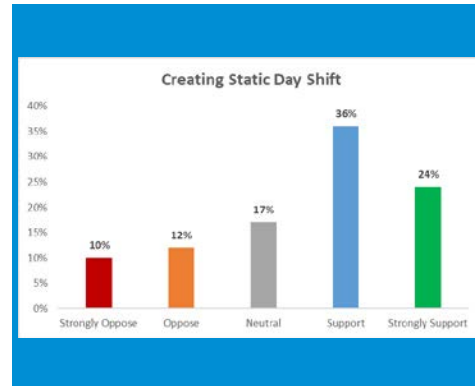
- Workload defined: call volume, travel time, investigative time
- Revised boundaries took effect on July 12, 2022
- 3 month review (Oct 12, 2022) call volume has equalized across the Branches.



Patrol Survey



1020 respondents provided feedback across the workload and wellness dimensions





New Patrol Model

- 10 squads in each Patrol Branch - 2 static day shift, 8 rotating shift
 - Each squad staffed to 1 Sergeant / 8 Constables – net increase of 36 positions in Patrol
 - Resource optimization mobilized 62 police officers to return to Patrol to fill existing vacancies and satisfy the required staffing level of 624 police Constables
 - 18 separate work units across the organization impacted
 - New patrol schedule maximizes the amount of police officers working the front line over a 24 hour period, aligned to workload which reduces wait time for dispatch
-

THANK YOU

Questions?

EDMONTON
POLICE
SERVICE