

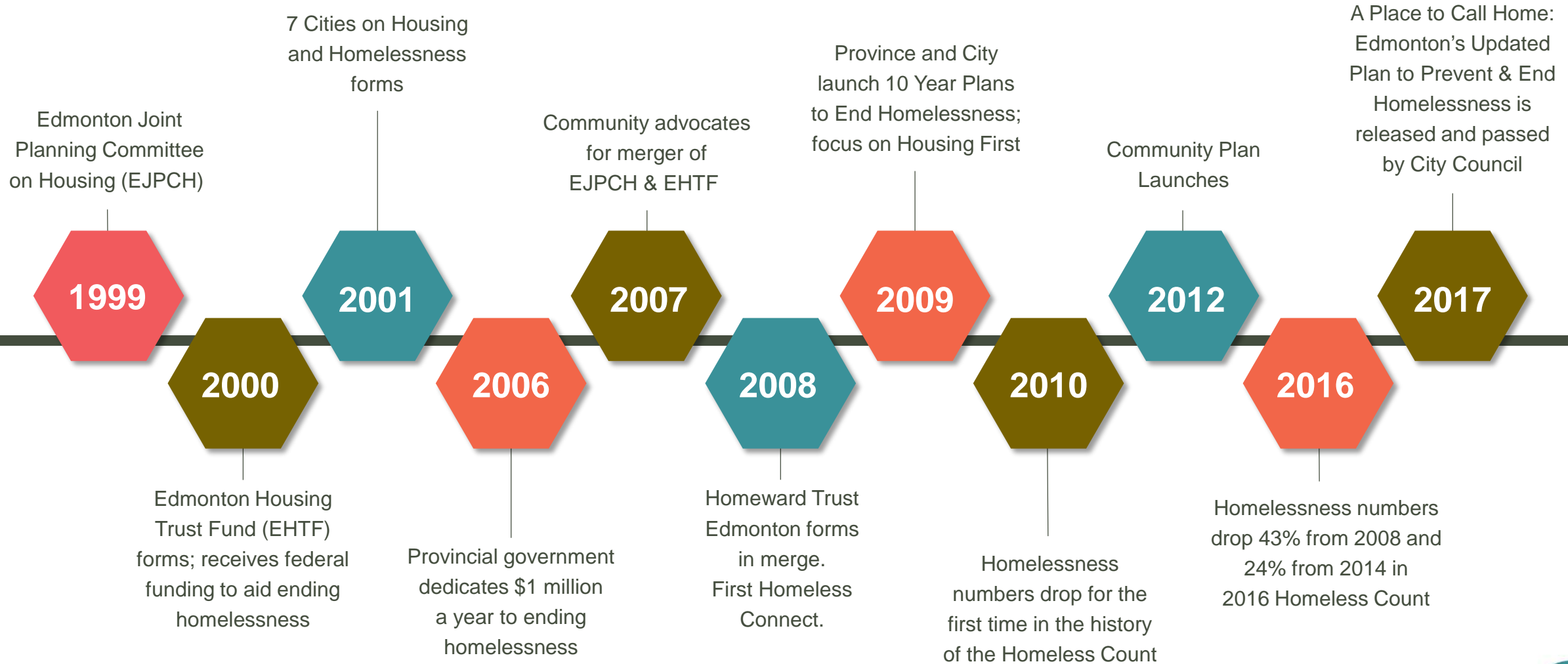


Homeward Trust Edmonton

Edmonton Police Commission

November 19, 2020

History



Comprehensive Approach

Leads efforts to end homelessness in Edmonton

- Responsible for stewarding provincial and local plans to end homelessness

- ✓ System planning
- ✓ Community leadership
- ✓ Data and knowledge management (HMIS)
- ✓ Evaluation
- ✓ Innovation



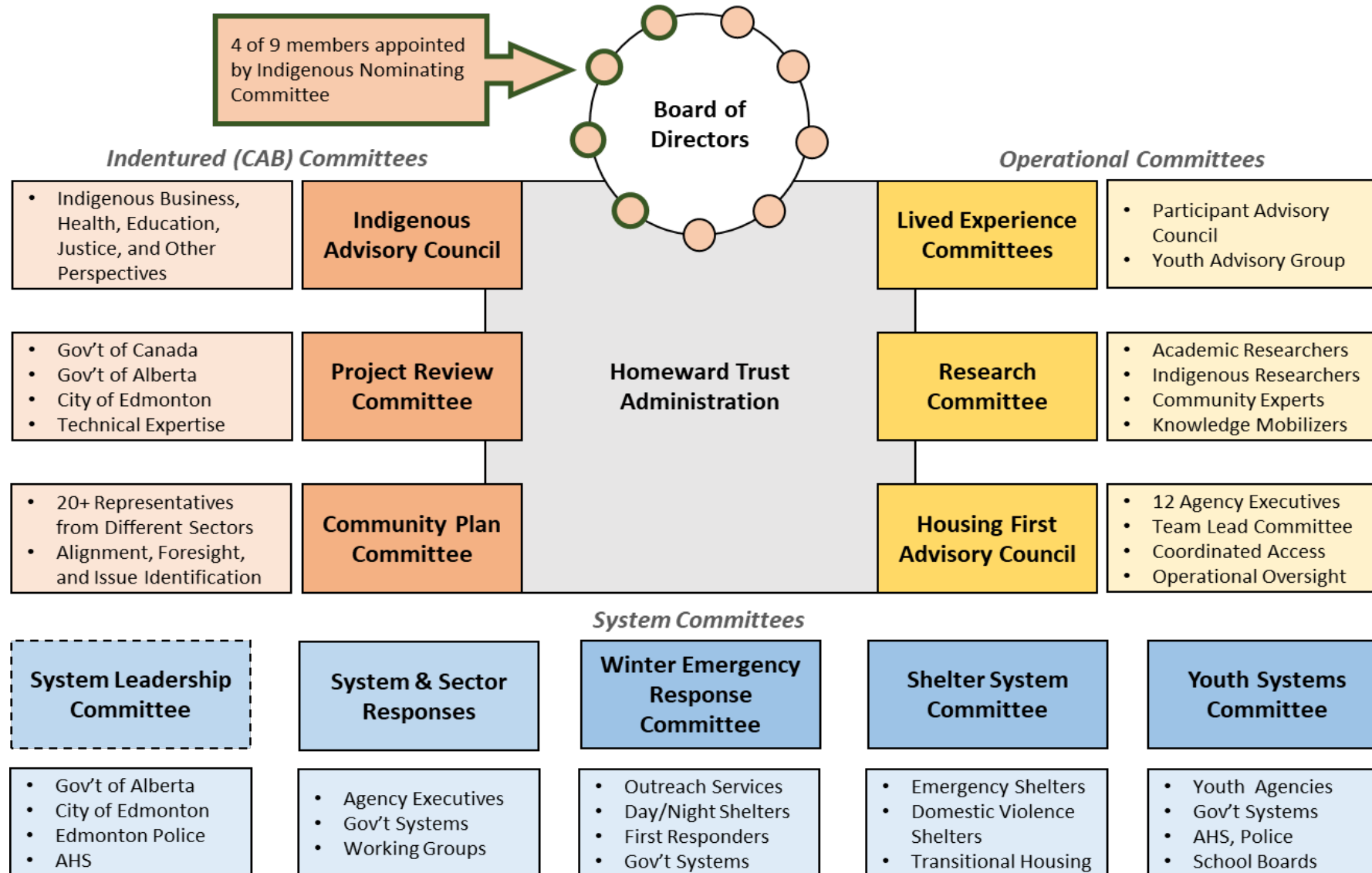
- ✓ Stewards and directs funding from 3 orders of government to meet community priorities
- ✓ Ensures compliance and contract reporting
- ✓ Invests in programs, housing supply, and community capacity

Implementation

- Community planning and engagement
- Review and investment in what works
- Taking risks and learning



Governance - Board



Guiding Documents

- A Place to Call Home: Edmonton's Updated Plan to Prevent and End Homelessness
- Government of Alberta: A Plan for Alberta & Edmonton Community Service Delivery Plan
- Reaching Home & National Housing Strategy (Directives)
- Community Strategy to End Youth Homelessness in Edmonton
- TRC Recommendations and Principles of Reconciliation
- Homeward Trust Strategic Plan



Our Role as defined in Plans

Federal

The Federal Reaching Home program is administered differently in every area and region. In Edmonton:

- ***Homeward Trust Administration*** is the ***Community Entity (CE)***;
- and -
- ***Homeward Trust Board of Directors & Indentured Committees*** comprise the ***Community Advisory Board (CAB)***

Provincial

In a Plan for Alberta Homeward Trust is one of the 7 ***Community Based Organizations (CBO)*** identified for local implementation

Municipal

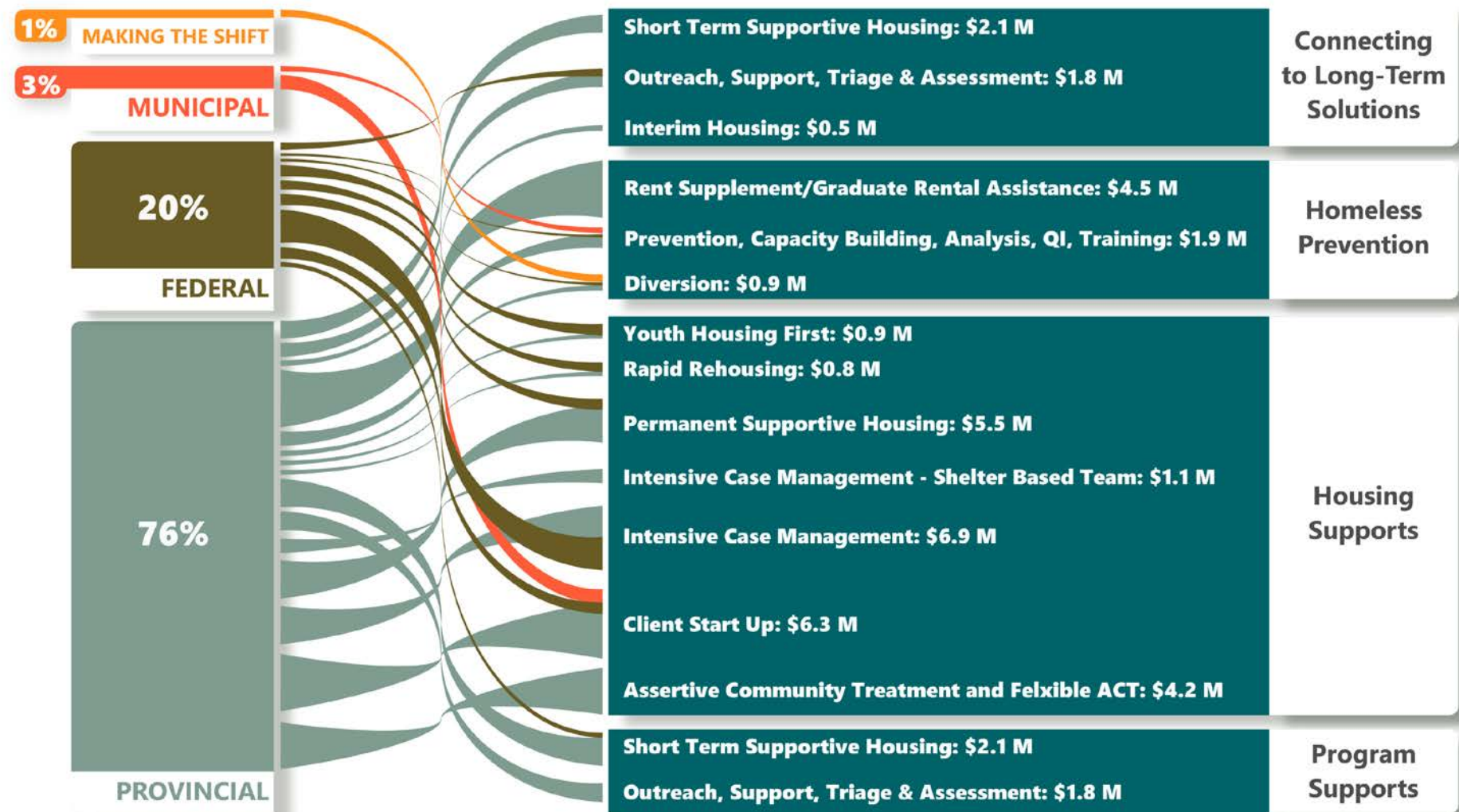
In Edmonton's Plan Homeward Trust is the ***Management Body*** responsible for its implementation



System Planning and Integration



Homeward Trust – Community Investments



Program Fundamentals

Prevention & Diversion

- Strategy to reduce the number of people entering homelessness
- Prevention helps households preserve their current situation
- Diversion identifies immediate housing arrangements & connects to services
- Supported Referral partners add resources

Outreach, CA and Housing First

- Philosophy & approach
- Provide housing as quickly as possible
- No preconditions
- Provides additional supports as needed
- Proven intervention
- Specialize teams for Indigenous, Youth and Families

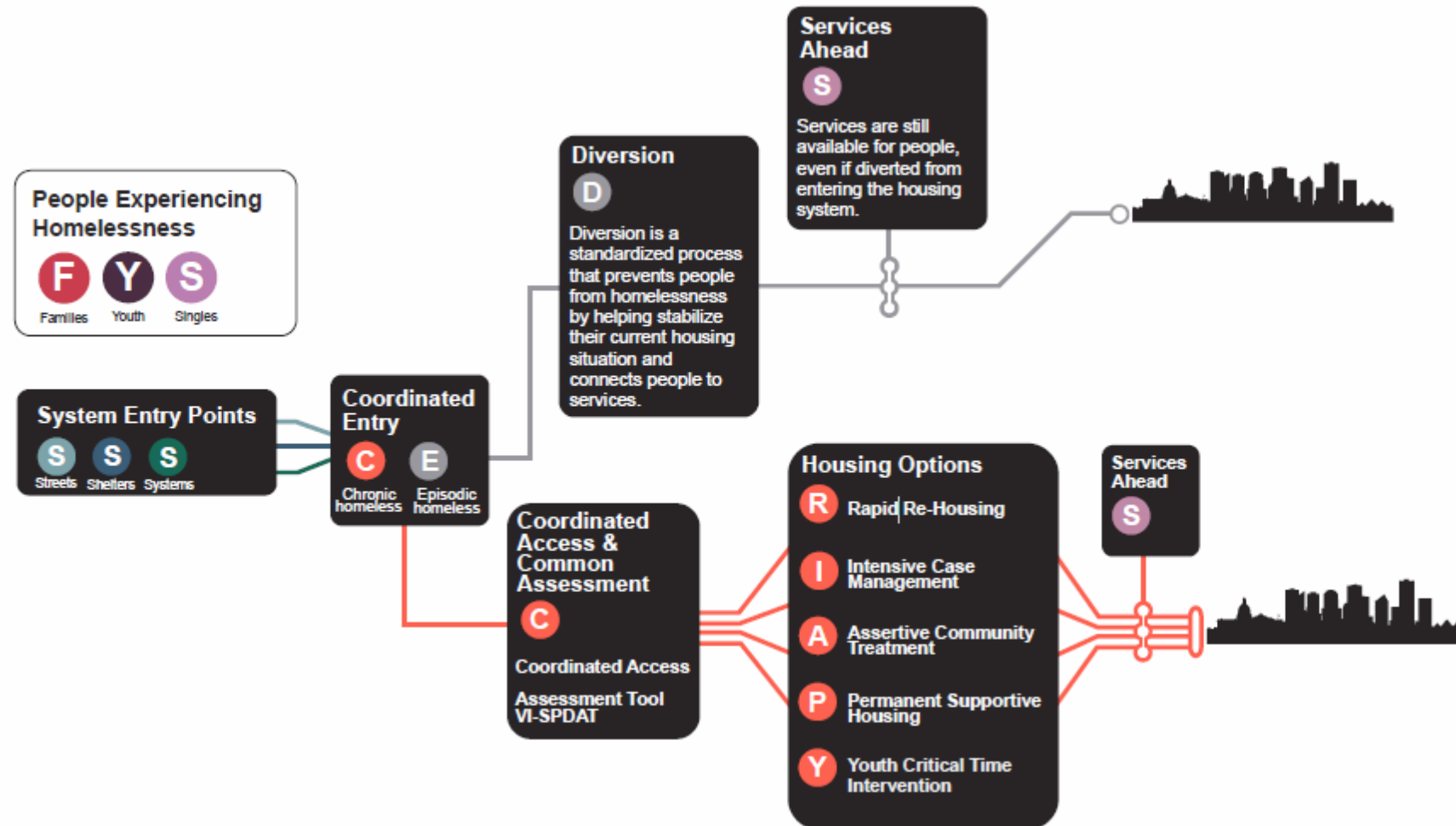
Clinical & High Intensity

- For people with complex needs
- Clinical (ACT) and Permanent Supportive Housing for long term sustainable supports
- Support services individualized for each person based on their needs
- Partnerships with AHS and others

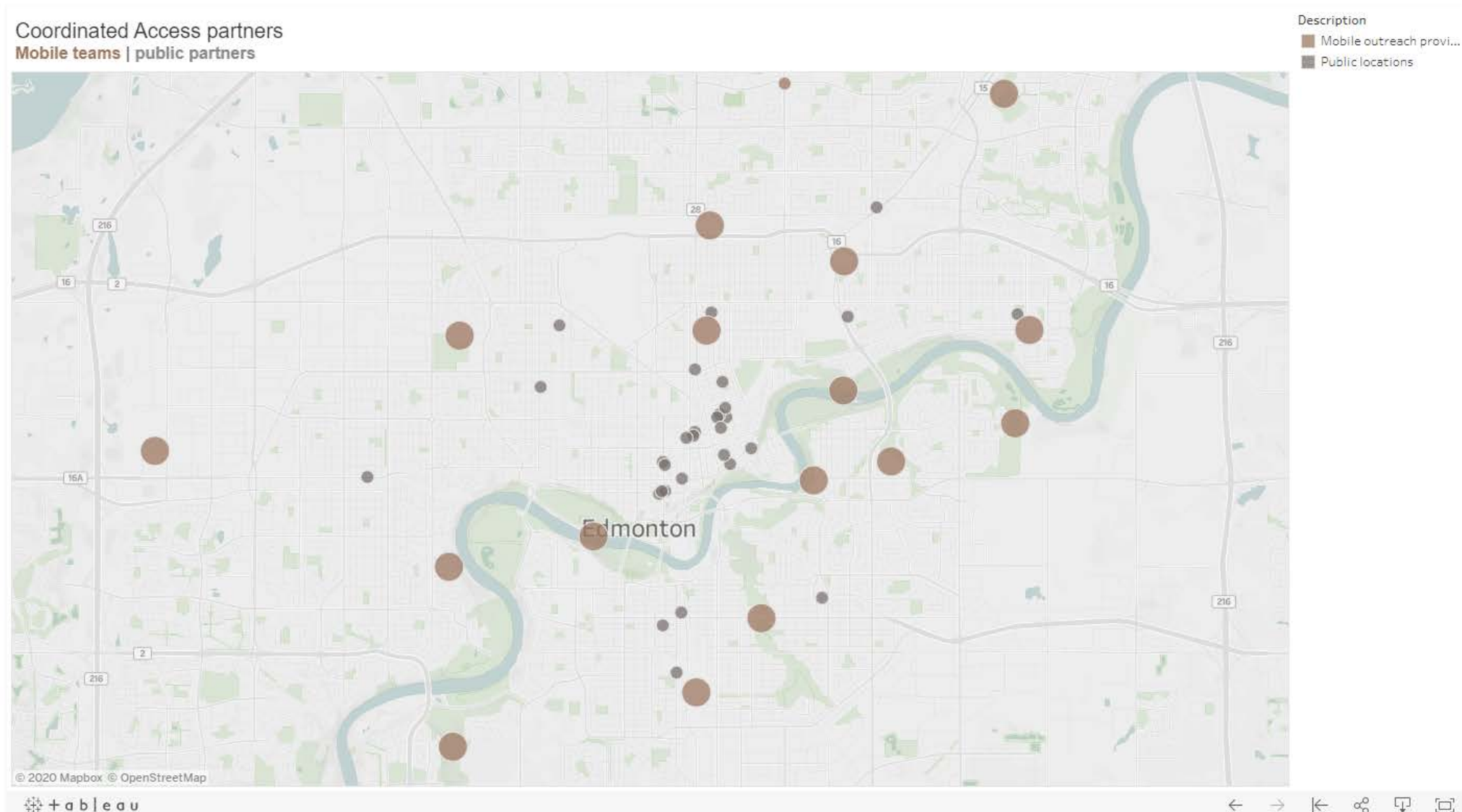


Coordinated Access

Designing Perfect | Working in Reality



Coordinated Access Screening Partners



By Name List

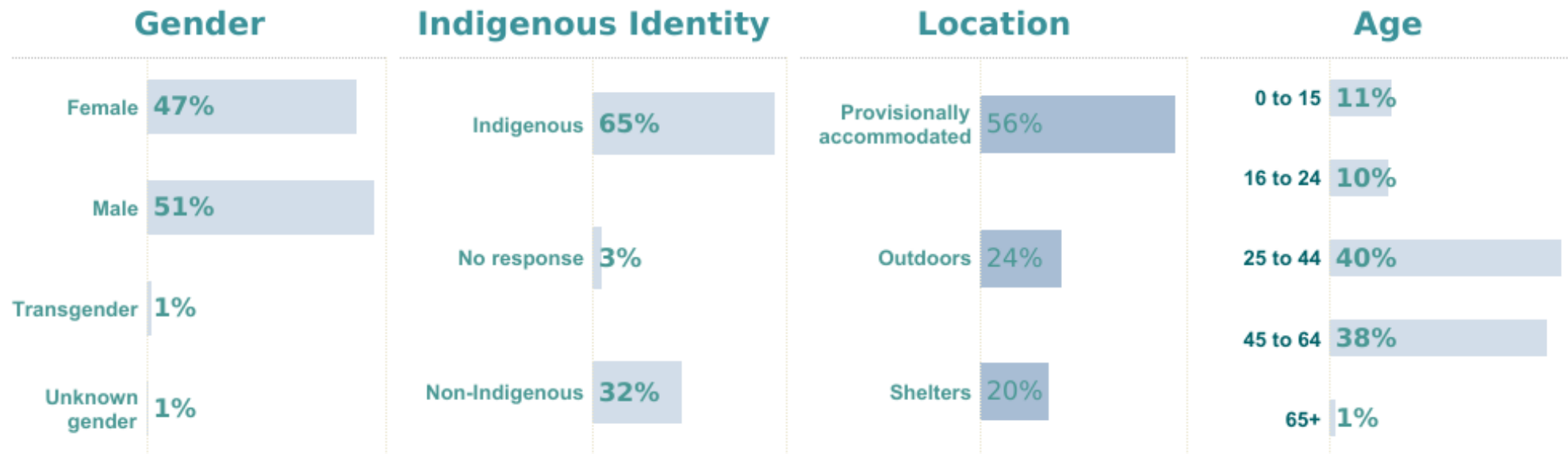
As of Date: Nov 16, 2020

Number of people in Edmonton ...

experiencing homelessness	newly entering homelessness	housed so far this month	housed in the last 6 months	supported by housing programs
1,969	105	59	841	1,838

You are viewing a profile of
People newly entering
homelessness

11,677 people were housed through **Housing First** and related programs since **2009**.



Homeless Counts



Housing First

A Proven Intervention

11,677

Housed and
Supported since 2009

85%

Remaining housed a
year after entering the
program

60%

Indigenous

80+ %

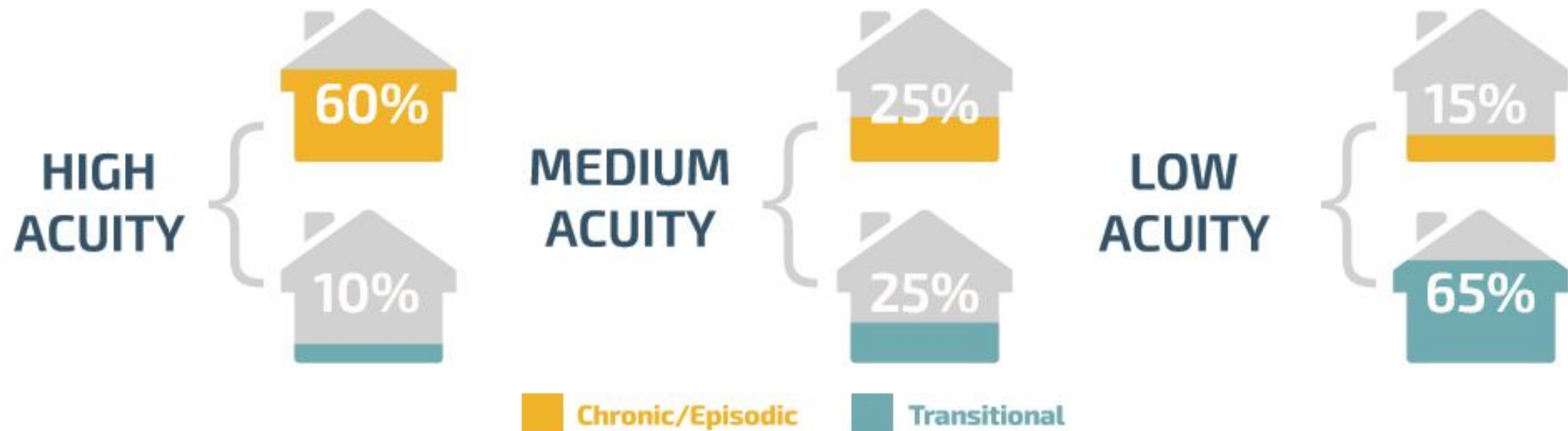
Live in rental
suites with
private landlords



Assumptions

Acuity

ESTIMATED DISTRIBUTION OF ACUITY LEVELS BY HOMELESSNESS DURATION

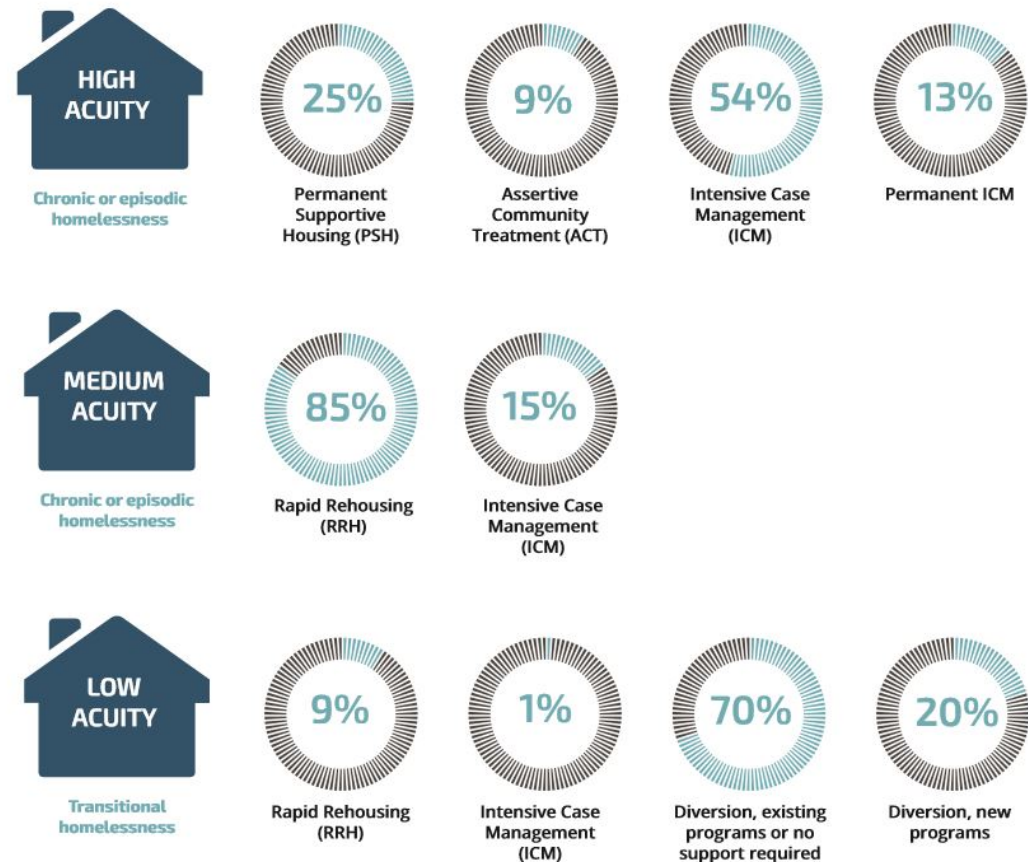


Assumptions

Program Suitability/Matching

Level of Need (Acuity)

The graphs below outline the chronic/episodic and transitional homelessness acuity levels among the target population served by the Plan according to estimated matching among diverse program types.



Supportive Housing and High Intensity Services

- Goal of 900 units Supportive Housing in next 5 years
- City of Edmonton support through policy, funding, sites for development
- Referrals through Coordinated Access
- Integrated with Homeless Management Information System (Efforts to Outcomes) database
- Pathways and AHS ACT Housing Team
- Spady Clinical Access Team

Approaches to Permanent Supportive Housing



Canora Place



Iris Court



Hope Terrace



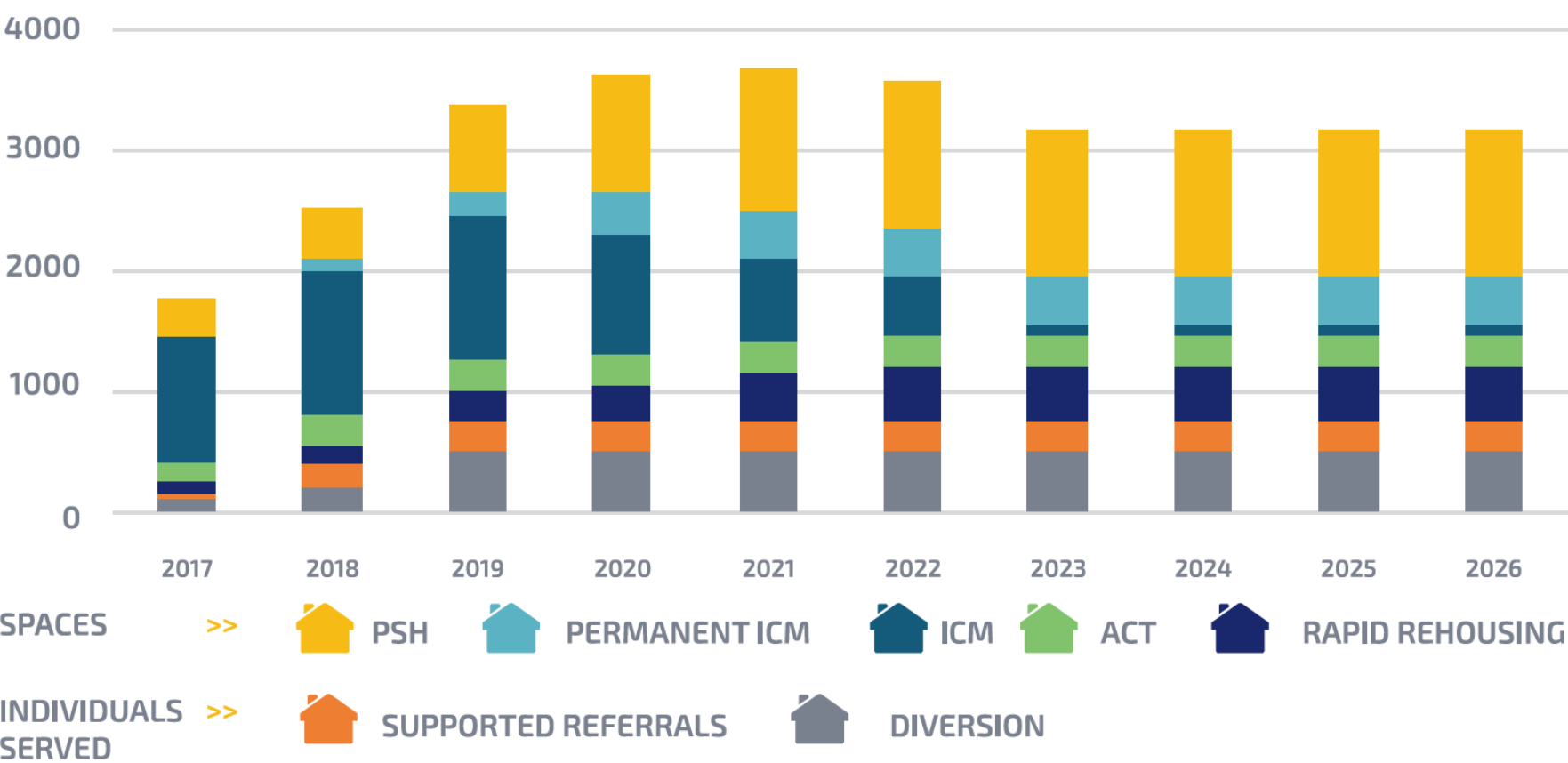
Ambrose Place

- Full range of approaches including:
 - Head leasing
 - Purchase and renovate
 - New/purpose built
- Effort to blend into the neighborhood in scale and design
- Common areas vary significantly by model/level of support
- Operated under housing Act – ensuring tenants rights with leases.

Modelling Need and Investment

HOMELESS-SERVING SYSTEM CUMULATIVE CAPACITY CHANGES

This chart shows cumulative changes year after year in the homeless-serving system. It shows the number of spaces per program type. Note the reallocations towards PSH and PICM in particular.



EPS Relationship Highlights

- Partners on Heavy Users of Service collaboration since 2012 (?)
- Piloted constable-housing outreach partnership to house people in contact with EPS
- Funded partnership between YMCA and EPS to support first-time youth offenders and their families
- EPS referrals to Housing First Coordinated Access
- Collaborating on system governance and integrative analysis for broad community issues



Encampment Response

— Cross System Coordination



Indigenous Relations

- Homeward Trust's Board of Directors has a minimum of four (4) Indigenous Board Members out of 9
- Indigenous Advisory Council
- Senior Indigenous Liaison
- Educator, Indigenous Culture, Services & Resources
- Indigenous Diversity Training for all staff and funded agencies
- Indigenous Specific Research & Planning
- Largest Indigenous Housing First Team in Canada
- Two New Indigenous Lead Youth Housing First Teams
- Participation and partnership in events
- Indigenous Programming
- Accessing cultural and traditional practices for participants





- Find provides essential furnishings free of charge to people moving out of homelessness through the Housing First Program.
- Find offers quality, low-cost, gently used furniture and housewares for sale to the public.
- Find South
Retail Store and Donation Centre
5120 – 122 Street
- Find Boutique on Jasper
12304 Jasper Ave

findedmonton.com



Thank You!

— Susan McGee

CEO

Homeward Trust

smcgee@homewardtrust.ca

