



Community Safety and Well-being Bureau: The Path Forward





Mandate:

CSWB through active detection identifies persons at greatest risk and harm to self, others, and community;

and in a client-centred, multi-disciplinary response navigates to the appropriate partners and systems

to enhance individual wellness and ensure community safety.

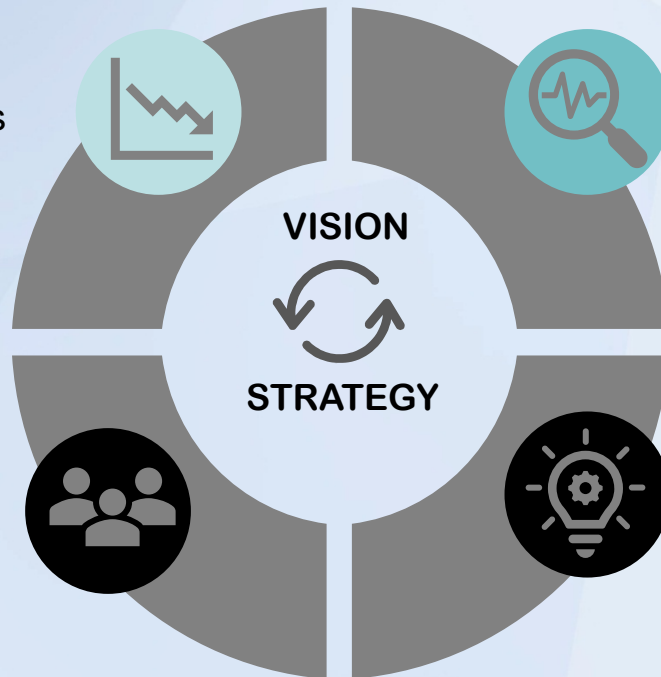
KEY AREAS OF PERFORMANCE FOCUS

Demand Reduction

- Service Delivery to Vulnerable People
- Crime Reduction strategies
- Diversion – proactive engagement
- Offramp Development

Employee Development

- Promoting Professional & Personal Growth
- Increasing Organizational Capacity
- Recognition and Merit Management
- Fostering Health and Wellness



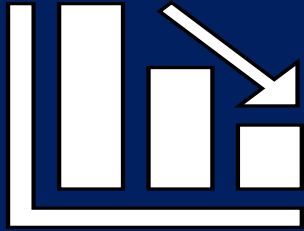
Process Improvement & Resource Optimization

- Partner & Volunteer Service & Resource Integration
- Applied Risk Tools and Reporting
- Leverage Technology & Tools
- Leverage Internal Expertise

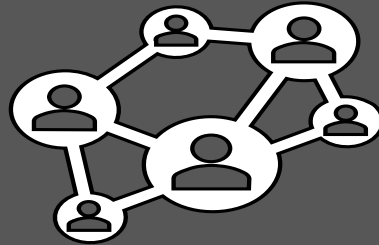
Innovation and Integration

- New Program Development
- Partner & Stakeholder Expertise
- Tools Application – ACES, Health IM etc.
- Leading Practices – Knowledge Transfer and Case Study Development

Our Objectives in CSWB



REDUCE DEMAND



CREATE AN OFF-
RAMP STRATEGY



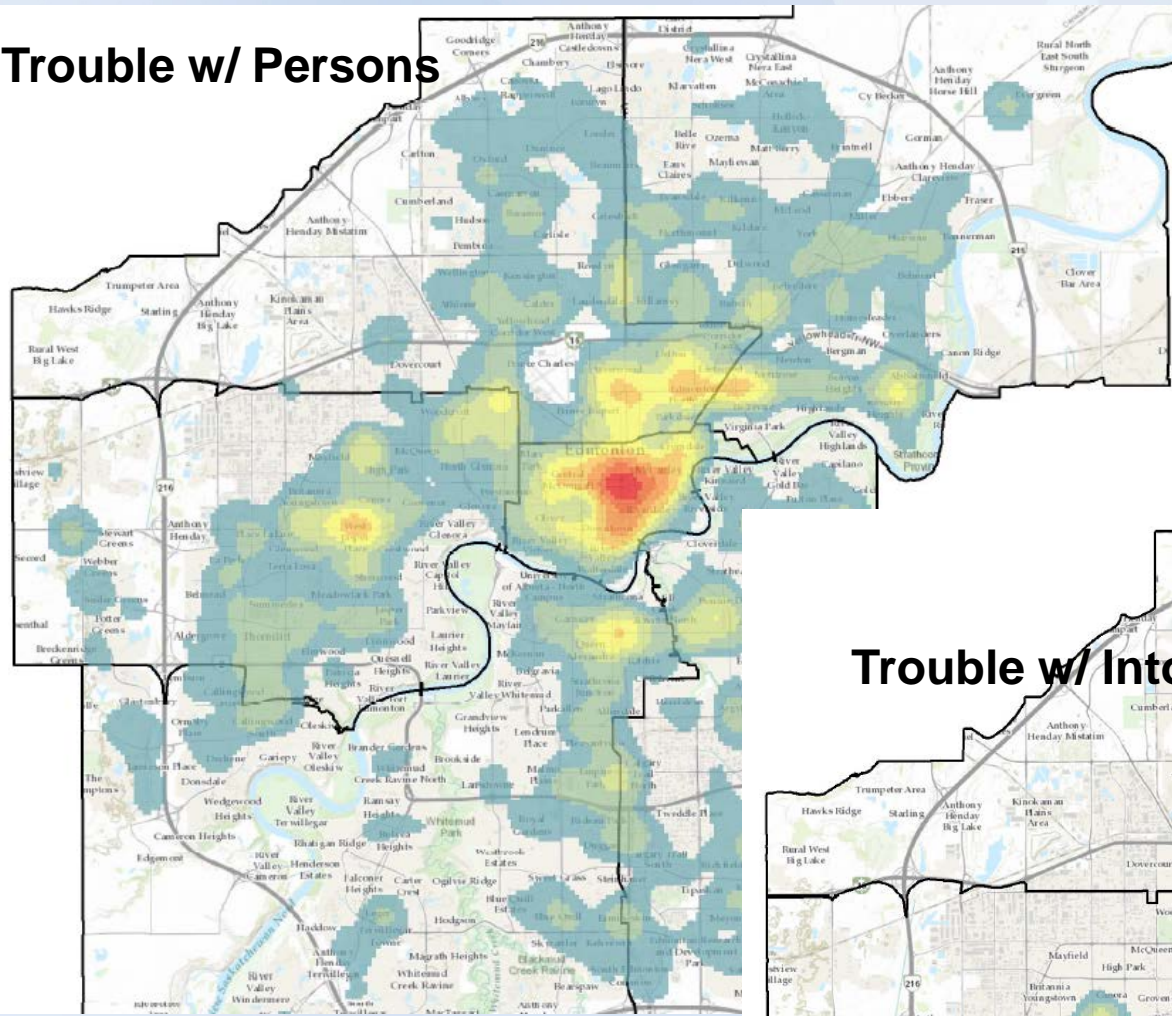
REDUCE CRIME &
DISORDER



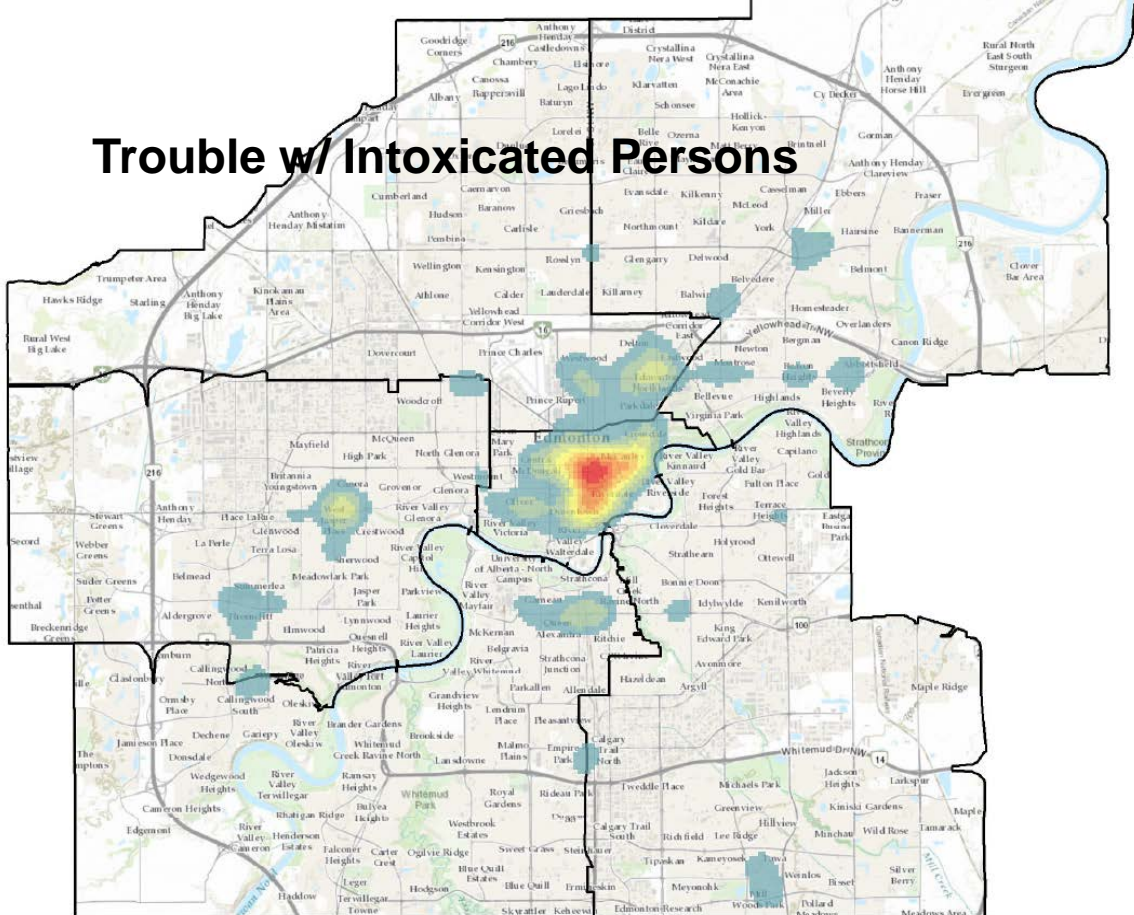
Public Demand

	#Dispatched Calls	Current Year	Prior Year to Date	% Change
13	Total	87,724	87,590	0.2%
14	113 TROUBLE WITH PERSON	10,389	8,994	15.5%
15	113 TROUBLE WITH INTOXICATED PERSONS	4,887	4,708	3.8%
16	134 TROUBLE NOT KNOWN	4,406	4,486	-1.8%
17	125 CHECK ON WELFARE	3,658	3,148	16.2%
18	130 THEFT UNDER \$5000	3,400	4,578	-25.7%
19	114 FAMILY RELATED OCCURRENCE	2,974	2,699	10.2%
20	114 FAMILY DISPUTES INTIMATE PARTNER	2,913	2,505	16.3%
21	113 NOISE COMPLAINT BYLAW	2,761	2,169	27.3%
22	121 MENTAL HEALTH ACT COMPLAINTS	2,569	2,382	7.9%
23	129 SUSPICIOUS PERSONS	2,274	2,173	4.6%
24	133 TRESPASSING	2,210	1,568	40.9%
25	113 DISTURBANCE	2,019	1,607	25.6%
26	122 GENERAL COMPLAINTS	1,977	1,905	3.8%
27	129 WARRANT EXECUTION	1,864	1,855	0.5%
28	106 ASSAULT COMMON	1,826	2,071	-11.8%
29	130 SHOPLIFTING UNDER \$5000	1,581	2,915	-45.8%
30	107 ASSIST EMS	1,525	1,488	2.5%

Trouble w/ Persons

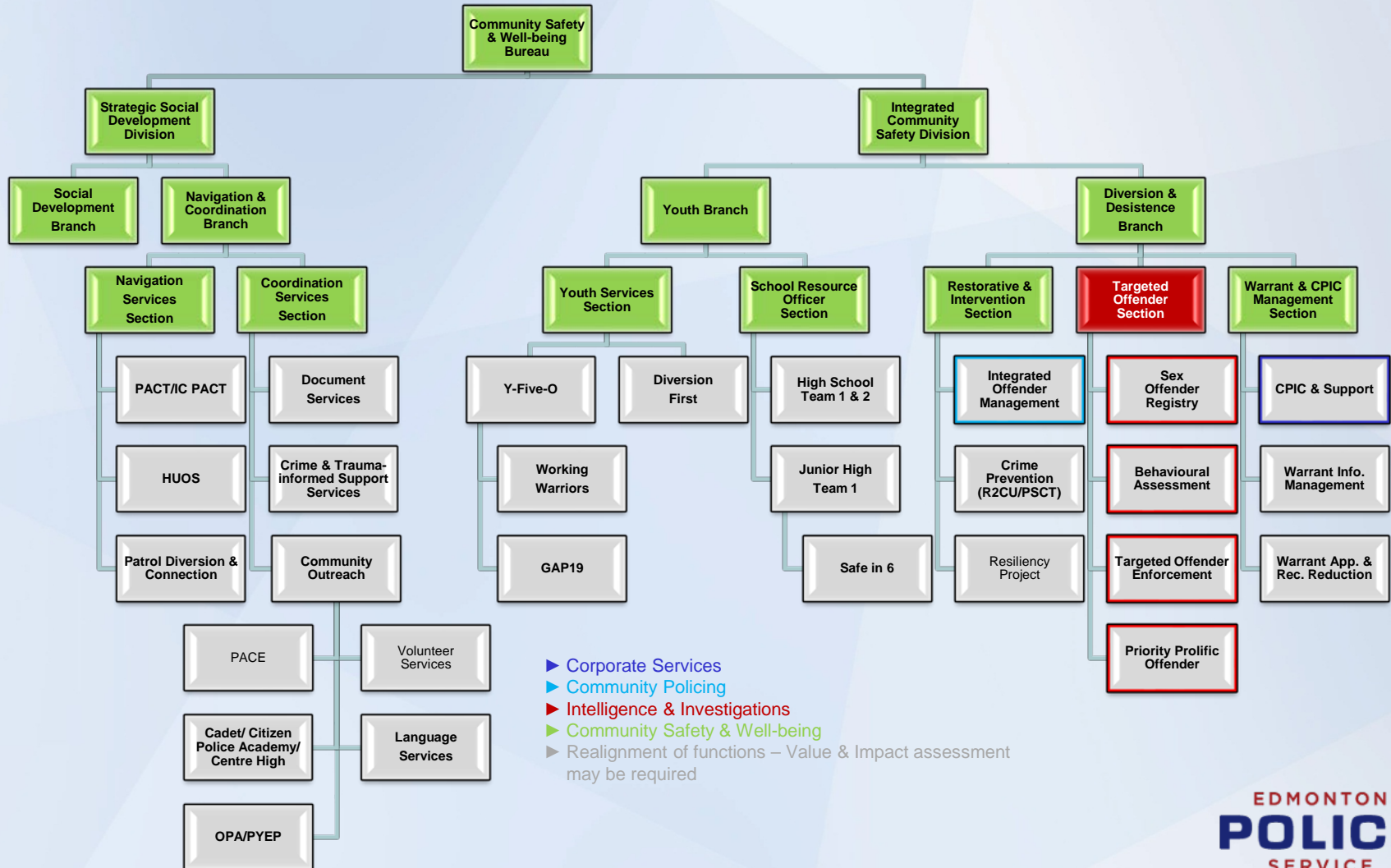


Trouble w/ Intoxicated Persons



January to June 2020

CSWB Structure



- ▶ Corporate Services
- ▶ Community Policing
- ▶ Intelligence & Investigations
- ▶ Community Safety & Well-being
- ▶ Realignment of functions – Value & Impact assessment may be required

CSWB Structure

Organized in 3 distinct pillars, focused on:

I. Determining Risk

- Warrant Assignment and Reduction
- High Risk offenders
- Assigned workload from matrix proactive engagement
- Integrated Service Plans

II. At Risk and High Risk Youth Diversion

- SRO's and Y-50!
- DiversionFirst, Working Warriors, WrapEd

III. Higher Acuity Clients

- Case Development Tables
- Partnership Agreements

Thinking Back

- 1980's - Change from Reactive to Proactive Policing
 - ❖ 3 R's
 - ❖ CATCH
- 1990's – Community Based Policing
 - ❖ Problem Solving
 - ❖ Theories of Crime and Place
- 2000's – Intelligence-led Policing
 - ❖ Data driven decision making
 - ❖ Hot Spots, Directed Activities
 - ❖ Technology
- 2010 – Evidence Based Policing
 - ❖ Focused Deterrence
 - ❖ Risk Instruments
 - ❖ Predictive Policing ... algorithms



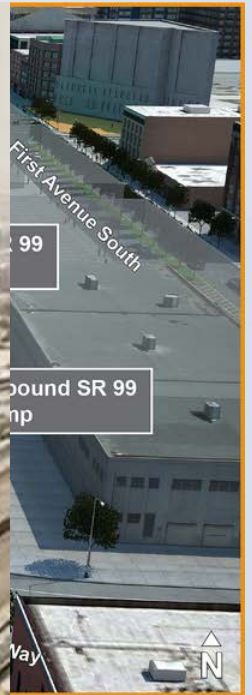
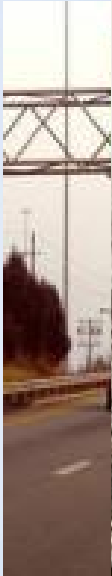
The Next 10 Years



- The next evolution ... “Community Safety Policing”
 - ❖ Demand Reduction
 - ❖ Alternatives to Charging (Diversion, Deflection, Desistance)
 - ❖ Risk Tools, inclusion of partner agency data
 - ❖ Harm Reduction
 - ❖ People-based ... *victims, offenders, at risk, high risk, vulnerable and marginalized persons*



Where's the 'Off Ramp' ?



Alignment to City Council Motion and Amendments



- 1 a) ‘... analysis of mental health, addictions, homelessness... how can calls be better responded to by partners thru interagency partnerships –without police intervention:”
- 1 b) “... analyze the ‘cracks in the system’ that drive higher crime, disorder and demand for service...”
- 2 a) iv) “...a detailed plan to integrate social services offered by CoE with CSWB to better serve vulnerable Edmontonians.”
- 2 d) “..pretence policing... the use of bylaws; Loitering, Jaywalking... Trespass, Fare evasion...”



Onward!