



EDMONTON POLICE SERVICE

REPORT TO THE EDMONTON POLICE COMMISSION

DATE: 2020 February 05

SUBJECT: Edmonton Police Service Control Tactics Statistics
2019 January – December Report

RECOMMENDATION(S):

That this report be received for information.

INTRODUCTION:

The Edmonton Police Service (EPS) submits two reports annually to the Edmonton Police Commission that outline all instances of reported use of force. One report provides a statistical summary of use of force events that occurred during the first half of the year and the second report provides a statistical summary of the entire year.

The information contained in this report was generated using statistical data captured from electronic Control Tactics Reports for occurrences with reported dates between 2019 Jan 01 and 2019 Dec 31. This report will also include a comparison of the current use of force data with previous data.

BACKGROUND:

The EPS captures use of force data through its electronic Control Tactics Reports. Control Tactics Reports are submitted after a police officer utilizes force where one or more of the following circumstances are present:

1. Injury resulting to any person;
2. Force used was higher than empty hand (soft) control, which is used for cooperative handcuffing;
3. Use of control tactics such as stunning techniques, direct mechanical techniques, chemical agents (O.C. spray), conducted energy weapon (CEW), control instruments, impact weapons, special impact munitions;
4. Firearm was drawn, displayed or pointed;

5. In the opinion of the investigating member and/or supervisor, unusual circumstances exist that necessitate the submission of the report.

COMMENTS / DISCUSSION:

There were 2363 control tactics occurrences in 2019, 0.5% lower than 2018. There were 3926 control tactics forms submitted in 2019 as compared to 4071 in 2018 a 3.6% decrease.

The reason that the number of Control Tactics Reports (in the chart below) are higher than the number of occurrences is due to the EPS policy requirement for every officer, involved in the use of force, to submit a Control Tactics Report. As well, more than one technique could be used at any one occurrence and different members on the scene may use different levels of force.

Jan - Dec	2017	2018	2019	Three Year Average	Change 2018-2019
Occurrences	2,508	2,374	2,363	2,415	-0.5%
Control Tactics Reports	4,288	4,071	3,926	1,095	-3.6%

The Edmonton Police Service has 2 broad Use of Force categories. Generally, Category I reviews involve reportable uses of force of a minor nature and Category II reviews are those involving a higher level or those circumstances where a supervisor decides a Category II review may be warranted.

Note: The data from incidents that require a 46.1 notification to the Director of Law Enforcement, which get assigned to the Alberta Serious Incident Response Team (ASIRT), do not form part of this report. A reason for this is that the data from those 46.1 incidents may still be under investigation and/or the mechanism that caused the reported injury may still be unclear.

Comparative Analysis of Category I and Category II Occurrences

Occurrences	2017	2018	2019	Three Year Average	Change 2018-2019
Category I	1,440	1,317	1,323	1,360	0.5%
Category II	1068	1057	1040	1,055	-1.6%
Category II %	42.6%	44.5%	44.0%	43.7%	-1.2%

Comparative Analysis of Category I and Category II Control Tactics Reports

Control Tactics Reports	2017	2018	2019	Three Year Average	Change 2018-2019
Category I	2761	2718	2522	2667	-196
Category II	1406	1549	1487	1480	-62
Category II %	33.7%	36.3%	37.1%	35.7	0.8%

The tables above show that the majority of Occurrences are Category I occurrences which consist of displays of force, (Canine Presence ,CEW Presence or Firearms Low Ready) and the lowest levels of hands on control such as holding/escort positions and joint locks. They also show that 62.9% of Control Tactics Reports in 2019 did not rise above the threshold for a Category I review.

In 2019 the number of reportable use of force occurrences decreased by 0.5% and the number of Control Tactics Reports decreased by 3.6%. By grouping use of force events into Category I and Category II we can see that the number of Category II occurrences has decreased to 44.0% in 2019 compared to 44.5% in 2018

CONCLUSION:

The EPS introduced Reasonable Officer Response to assist in providing a professional and defensible use of force framework. This is premised on basing the use of force on the standard of “objective reasonableness” and includes a supporting foundation based upon:

1. Lawful and professional presence,
2. Tactical communications, and
3. Tactical considerations.

EPS recognized that the need for engaged supervision involving use of force events is critical. Supervisory reviews are a requisite step in the Reasonable Officer Response process; further, they provide guidance and mentorship to the membership. This resulted in the implementation of service wide protocols following all EPS reportable use of force events which included professional awareness, thorough reporting and supervisory oversight review.

ADDITIONAL INFORMATION ATTACHED:


- Attachment 1 - Comparison of the various control tactics that were utilized (2018 vs. 2019);
- Attachment 2 - Table depicting the ascending order of the control tactics utilized
- Attachment 3 – The top ten CAD event types where force was used and the top ten EPS event types where force was used;
- Attachment 4 - A monthly comparison of CTR occurrences and reports in 2019;
- Attachment 5 - A monthly comparison depicting the geographical location of the various control tactics occurrences. *This is a comparison of the geographical location of the use of force and is not a reflection of the use of force by individual Divisions, Sections, Units, etc;*
- Attachment 6 - A quarterly comparison of the of the control tactics utilized over the last 5 years.
- Attachment 7 - PowerPoint Presentation.

Written By: Larry Snidal
Training Section


Reviewed By: Inspector Trevor Hermanutz
Professional Development Branch

 2020 Feb 10

Reviewed By: Executive Director Darren Eastcott
Human Resources Division

 2020 Feb 11

Approved By: Deputy Chief Darren Derko
Corporate Services Bureau

 Feb 12/20
Submitted for information to Chiefs Committee prior to
presentation at EDC. Insp Hermanutz can attend cc if there
are any questions/concerns.

Chief of Police: Dale McFee

Date: Feb 13, 2020



2019 Control Tactics

# Occurrences (Control Tactics)		Q1	Q2	Q3	Q4	Totals
Canine Contact	2018	23	23	26	28	100
	2019	18	24	29	18	89
	Change	-5	1	3	-10	-11
	% Change	-21.7%	4.3%	11.5%	-35.7%	-11.0%
Canine Presence	2018	100	88	103	119	410
	2019	111	122	133	145	511
	Change	11	34	30	26	101
	% Change	11.0%	38.6%	29.1%	21.8%	24.6%
CEW Presence/Laser	2018	105	88	84	75	352
	2019	82	95	110	91	378
	Change	-23	7	26	16	26
	% Change	-21.9%	8.0%	31.0%	21.3%	7.4%
CEW Probes	2018	30	42	31	37	140
	2019	48	47	47	53	195
	Change	18	5	16	16	55
	% Change	60.0%	11.9%	51.6%	43.2%	39.3%
CEW Stun	2018	8	11	12	8	39
	2019	14	6	14	13	47
	Change	6	-5	2	5	8
	% Change	75.0%	-45.5%	16.7%	62.5%	20.5%
Firearm, Low Ready	2018	238	205	216	224	883
	2019	192	198	204	195	789
	Change	-46	-7	-12	-29	-94
	% Change	-19.3%	-3.4%	-5.6%	-12.9%	-10.6%
Firearm, Pointed	2018	58	41	50	47	196
	2019	42	52	50	45	189
	Change	-16	11	0	-2	-7
	% Change	-27.6%	26.8%	0.0%	-4.3%	-3.6%
Baton	2018	3	6	4	10	23
	2019	8	6	10	5	29
	Change	5	0	6	-5	6
	% Change	166.7%	0.0%	150.0%	-50.0%	26.1%
Impact, Other	2018	4	2	7	5	18
	2019	6	4	6	2	18
	Change	2	2	-1	-3	0
	% Change	50.0%	100.0%	-14.3%	-60.0%	0.0%

# Occurrences (Control Tactics)		Q1	Q2	Q3	Q4	Totals
OC Spray	2018	5	9	13	10	37
	2019	9	7	14	14	44
	Change	4	-2	1	4	7
	% Change	80.0%	-22.2%	7.7%	40.0%	18.9%
Balance Displacement /Takedown	2018	147	166	181	183	677
	2019	155	169	156	143	623
	Change	8	3	-25	-40	-54
	% Change	5.4%	1.8%	-13.8%	-21.9%	-8.0%
Communication	2018	495	485	497	542	2,019
	2019	491	535	560	511	2,097
	Change	-4	50	63	-31	78
	% Change	-0.8%	10.3%	12.7%	-5.7%	3.9%
Disarming Technique	2018	0	9	5	5	19
	2019	2	3	6	2	13
	Change	2	-6	1	-3	-6
	% Change	NA	-66.7%	20.0%	-60.0%	-31.6%
Holding Technique	2018	156	165	163	181	665
	2019	172	172	171	176	691
	Change	16	7	8	-5	26
	% Change	10.3%	4.2%	4.9%	-2.8%	3.9%
Joint Manipulation	2018	61	84	74	81	300
	2019	84	78	79	63	304
	Change	23	-6	5	-18	4
	% Change	37.7%	-7.1%	6.8%	-22.2%	1.3%
Strike	2018	88	95	94	135	412
	2019	102	96	117	79	394
	Change	14	1	23	-56	-18
	% Change	15.9%	1.1%	24.5%	-41.5%	-4.4%
Stun /Distraction	2018	49	57	48	73	227
	2019	68	48	55	44	215
	Change	19	-9	7	-29	-12
	% Change	38.8%	-15.8%	14.6%	-39.7%	-5.3%
Control Tactics Reports	2018	1082	921	1002	1066	4071
	2019	932	988	1045	961	3926
	Change	-150	67	43	-105	-145
	% Change	-13.9%	7.3%	4.3%	-9.8%	-3.6%
Control Tactics Occurrences	2018	582	571	600	621	2374
	2019	548	600	644	571	2363
	Change	-34	29	44	-50	-11
	% Change	-5.8%	5.1%	7.3%	-8.1%	-0.5%



Control Tactics Reports Control Tactics Occurrences for 2019

Report Source:
EPROS Control Tactics
Run By: Larry Snidal

Geographic Division: City Wide District: All Districts
Report Type: Person and Tactical Entry Team
Based on Occurrence Reported Date

Information as at Date:
3 Feb 2020 23:59

# Occurrences	January	February	March	April	May	June	July	August	September	October	November	December	Total
Physical, Disarming Technique	1		1	1	2		2		4	1		1	13
Impact, Other	2	2	2	1	1	2	2	1	3		2		18
Impact, Baton Deployed	2	3	3	1	2	3	4	1	5	3	1	1	29
OC, OC Deployed	3	1	5	1	3	3	2	6	1	5	6	3	44
CEW, CEW Stun	6	4	4	3	1	2	5	2	2	2	4	2	47
Canine, Canine Contact	2	4	2	6	11	2	12	6	11	5	6	2	89
Firearm, Pointed	23	2	12	18	21	13	18	13	19	13	16	16	189
CEW, CEW Probes	19	14	15	20	15	12	14	16	17	23	13	17	195
Physical, Stun Technique/Distracton	22	18	28	18	18	12	8	19	28	13	20	11	215
Physical, Joint Manipulation	28	25	31	27	28	23	25	26	28	28	21	14	304
CEW, CEW Presence/Laser	30	25	27	32	34	29	39	34	37	31	30	30	378
Physical, Strike	36	25	41	29	36	31	32	44	41	25	31	23	394
Canine, Canine Presence	43	29	39	48	40	34	44	43	46	51	48	46	511
Physical, Balance Displacement/Takedown	49	51	55	52	58	54	41	55	60	44	59	40	623
Physical, Holding Technique	58	52	62	58	62	52	46	52	68	56	63	52	691
Firearm, Low Ready	25	55	62	22	69	52	68	22	64	50	83	62	789
Physical, Communication	183	137	171	191	187	152	171	189	200	159	197	155	2,097
Physical, Officer Presence	186	139	175	191	189	161	173	190	213	165	203	161	2,146

Filters Used: Report Type = Person and Tactical Entry Team

Report #: CTR-1 Control Tactics
Annual Reports

Report Generated Date: 2020-02-04 3:39 PM



Control Tactics Reports Control Tactics Occurrences for 2019

Report Source:
EPROS Control Tactics
Run By: Larry Snidal

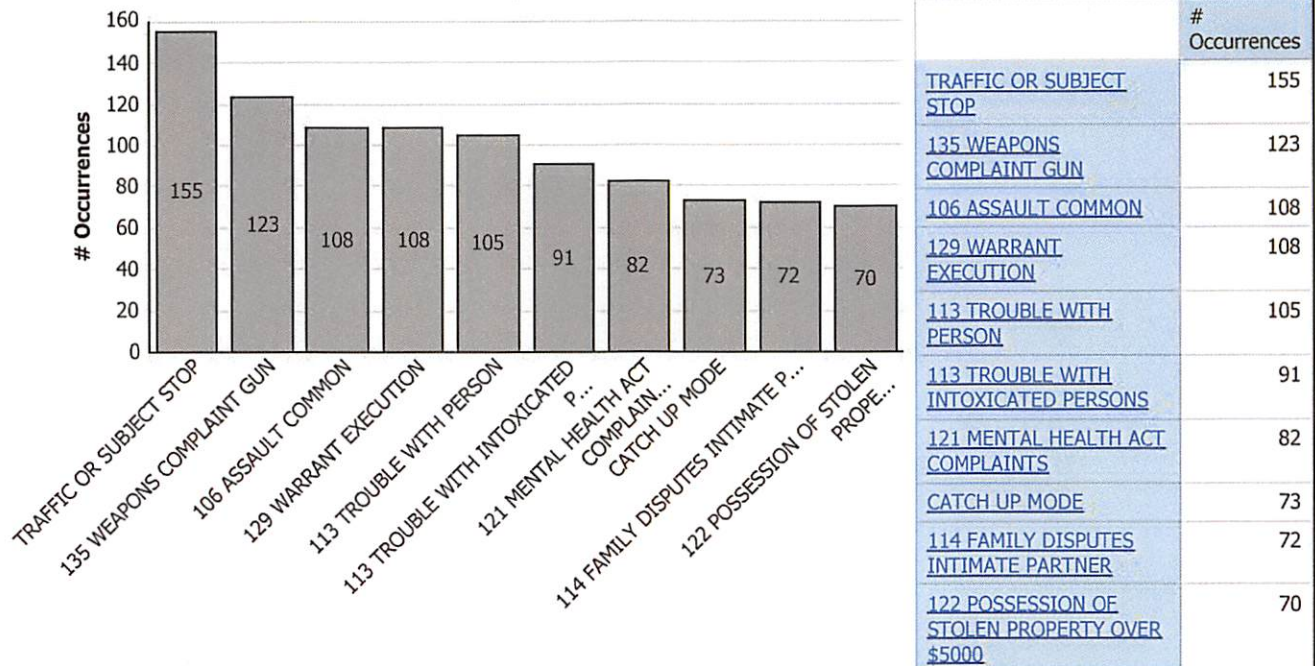
Geographic Division: City Wide District: All Districts

Report Type: Person and Tactical Entry Team

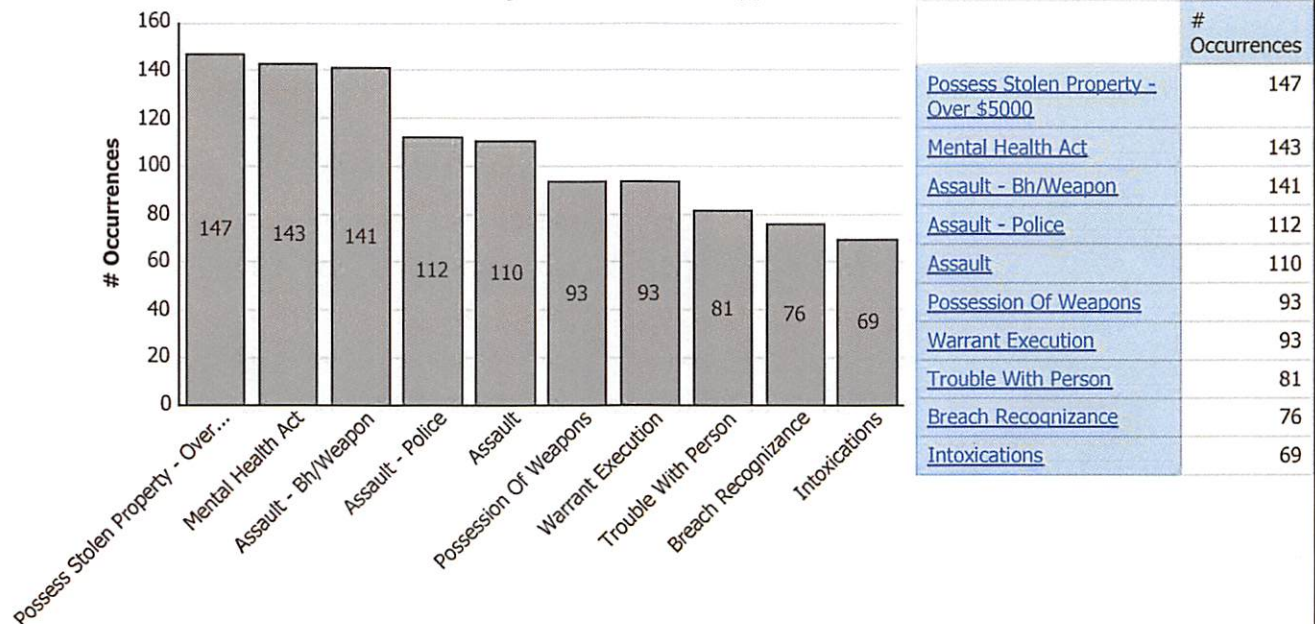
Based on Occurrence Reported Date

Information as at Date:
3 Feb 2020 23:59

Top 10 CAD Event Types



Top 10 Occurrence Types



Filters Used: Report Type = Person and Tactical Entry Team

Report #: CTR-1 Control Tactics
Annual Reports

Report Generated Date: 2020-02-04 3:39 PM

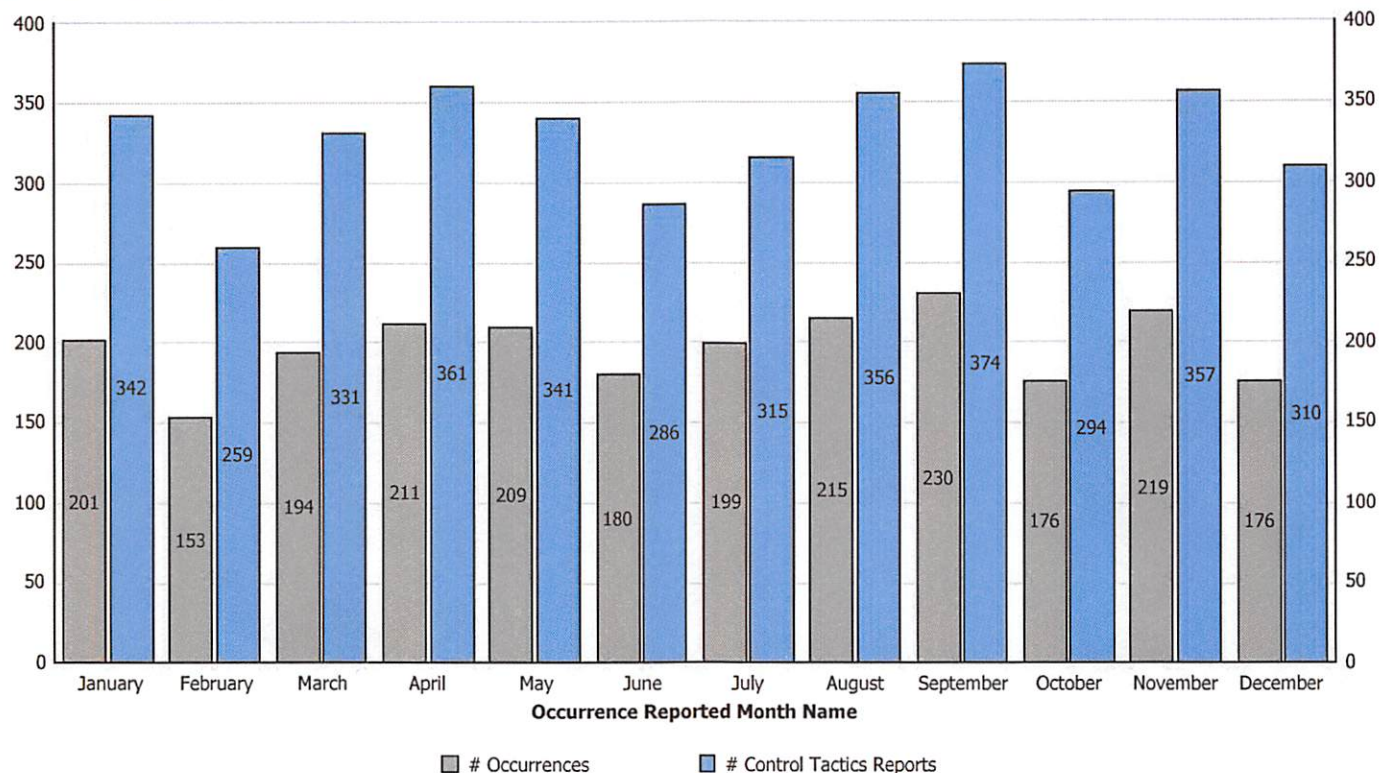


Control Tactics Reports Control Tactics Occurrences for 2019

Report Source:
EPROS Control Tactics
Run By: Larry Snidal

Geographic Division: City Wide District: All Districts
Report Type: Person and Tactical Entry Team
Based on Occurrence Reported Date

Information as at Date:
3 Feb 2020 23:59



# Occurrences	January	February	March	April	May	June	July	August	September	October	November	December	Total
2019	201	153	194	211	209	180	199	215	230	176	219	176	2,363

# Control Tactics Reports	January	February	March	April	May	June	July	August	September	October	November	December	Total
2019	342	259	331	361	341	286	315	356	374	294	357	310	3,926

* Multiple Control Tactics Reports may be generated for each occurrence due to multiple officers involved or multiple subjects.

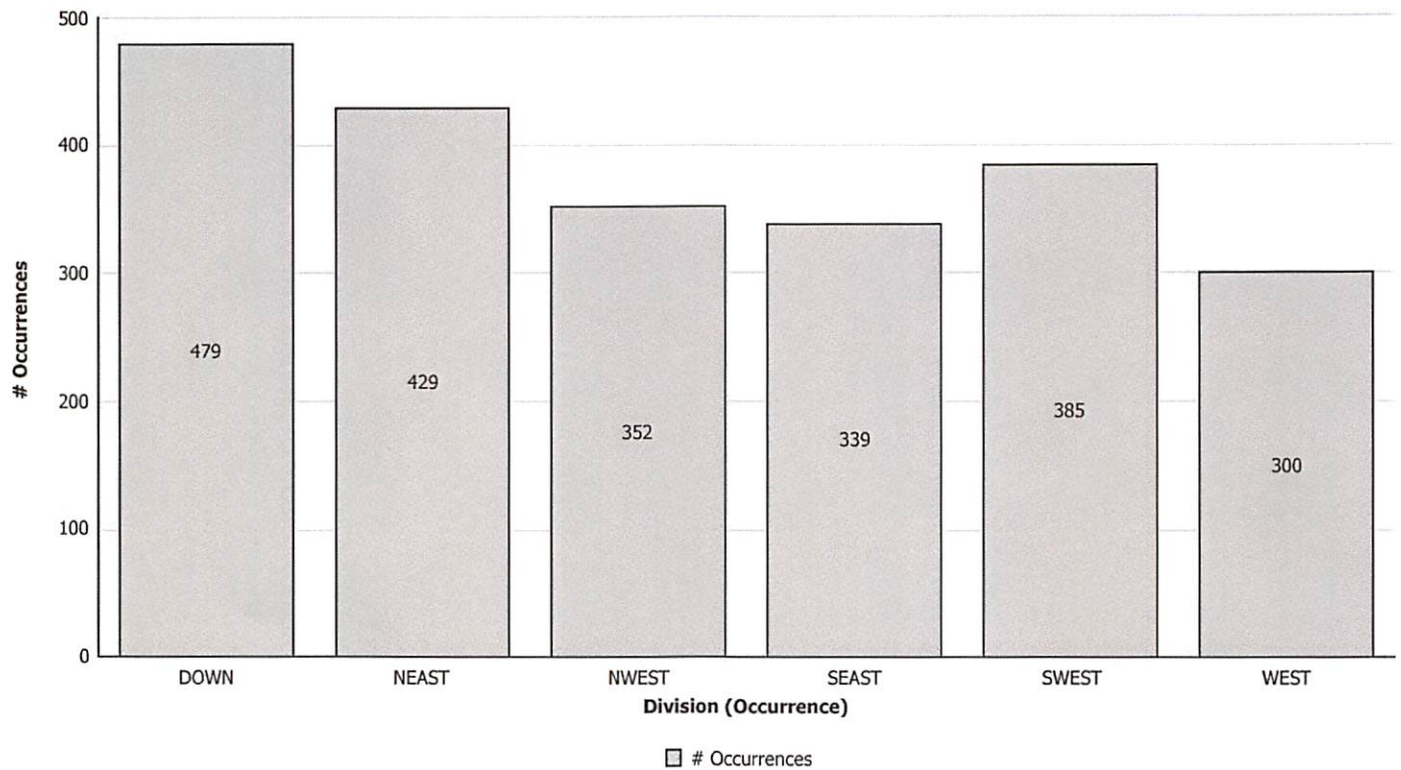


Control Tactics Reports Control Tactics Occurrences for 2019

Report Source:
EPROS Control Tactics
Run By: Larry Snidal

Geographic Division: City Wide District: All Districts
Report Type: Person and Tactical Entry Team
Based on Occurrence Reported Date

Information as at Date:
3 Feb 2020 23:59



# Occurrences	January	February	March	April	May	June	July	August	September	October	November	December	Total
DOWN	26	40	36	44	42	43	38	49	49	29	47	36	479
NEAST	35	27	34	41	36	33	40	39	43	30	42	29	429
NWEST	38	28	32	27	31	19	24	30	35	30	30	28	352
SEAST	39	11	25	29	31	18	32	34	29	32	31	28	339
SWEST	25	26	36	36	34	34	27	35	39	23	37	33	385
WEST	28	19	26	22	27	29	28	23	28	25	25	20	300

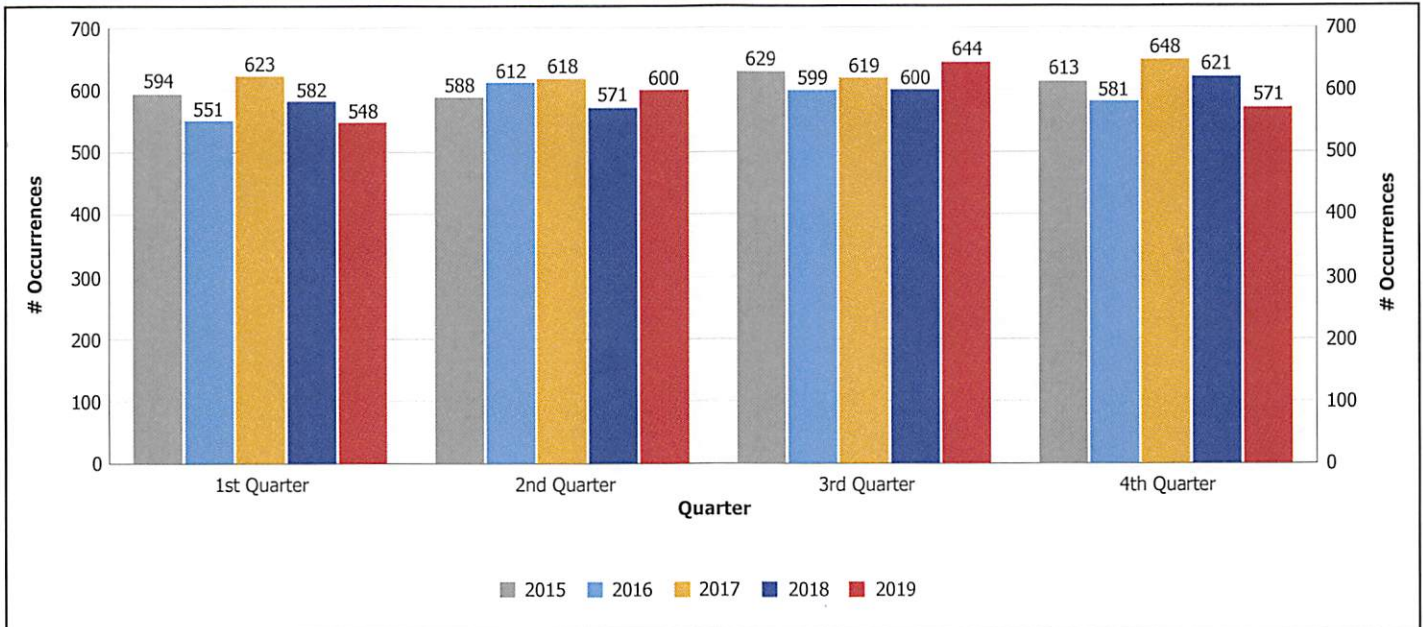


Control Tactics Reports Use of Force Quarterly Report 2019 Dec

Report Source:
EPROS Control Tactics
Run By: Larry Snidal

Geographic Division: City Wide District: All Districts
Report Type: Person and Tactical Entry Team
Based on Occurrence Reported Date

Information as at Date:
3 Feb 2020 23:59



Please Note: In order to present the most accurate and up to date information on Use of Force incidents and deployments, the report will contain all data entered previous to the report. Delays in approving reports mean that information may be received 2 months or more after the incident. This information will be included in future updates and will be reflected in changes to the numbers as reports are received and entered.

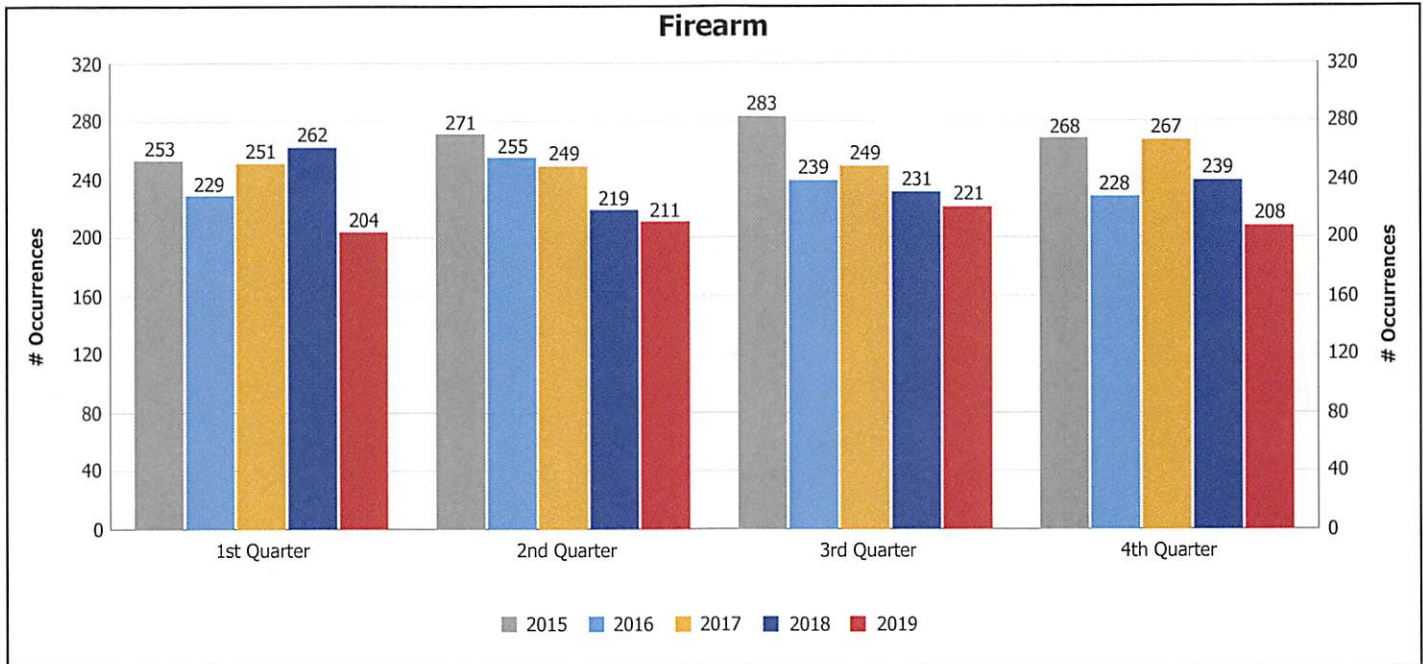


Control Tactics Reports Use of Force Quarterly Report 2019 Dec

Report Source:
EPROS Control Tactics
Run By: Larry Snidal

Geographic Division: City Wide District: All Districts
Report Type: Person and Tactical Entry Team
Based on Occurrence Reported Date

Information as at Date:
3 Feb 2020 23:59



"Firearm" encompasses the following Police issued firearms: Handguns, Carbines, Shotguns, Rifles, and Tactical Firearms.

"Occurrences" refers to one specific situation where officers responded and utilized their firearm in one of the following methods: low ready position, pointed or fired.

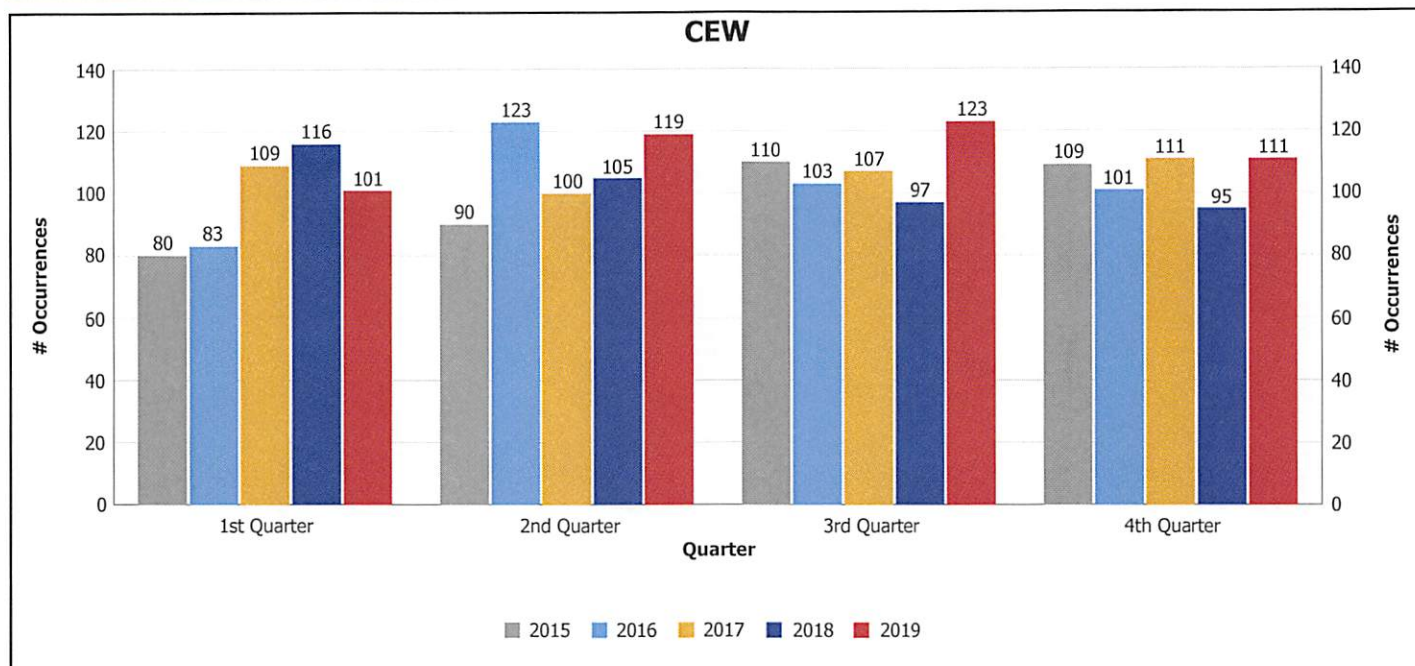


Control Tactics Reports Use of Force Quarterly Report 2019 Dec

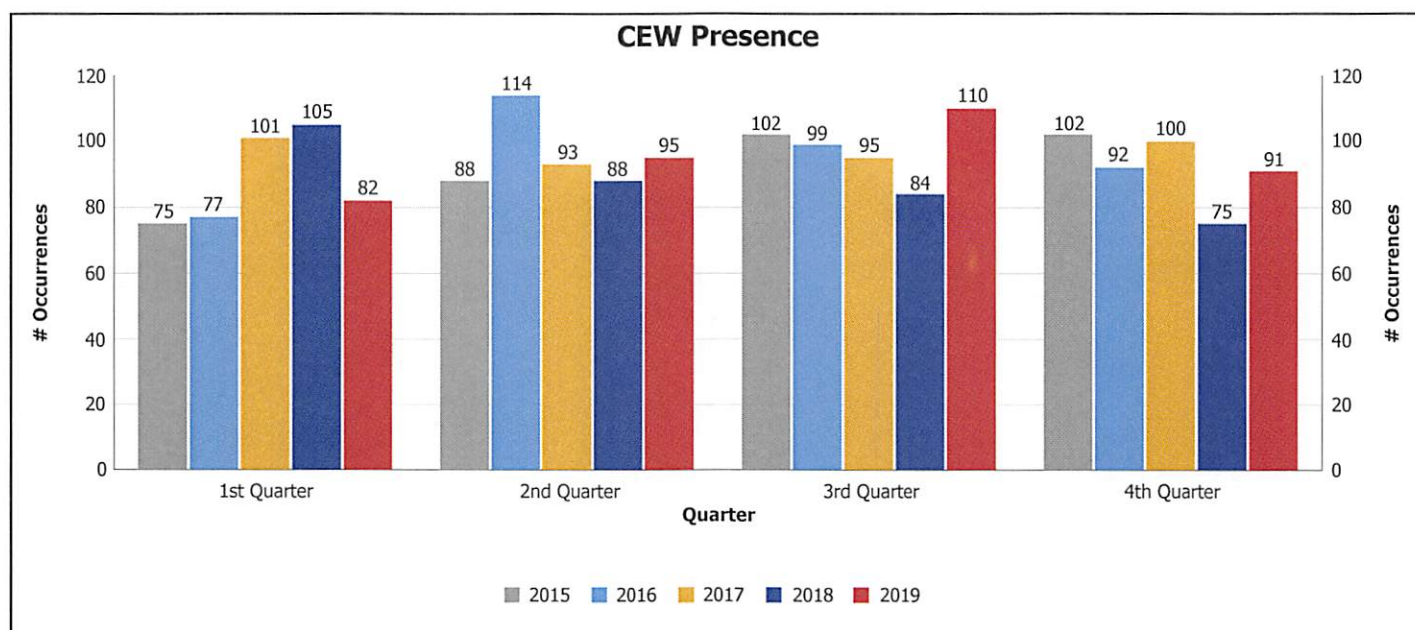
Report Source:
EPROS Control Tactics
Run By: Larry Snidal

Geographic Division: City Wide District: All Districts
Report Type: Person and Tactical Entry Team
Based on Occurrence Reported Date

Information as at Date:
3 Feb 2020 23:59



"CEW" refers to the TASER X26 the current model that the Edmonton Police Service issues: CEW is classified as an Intermediate Weapon

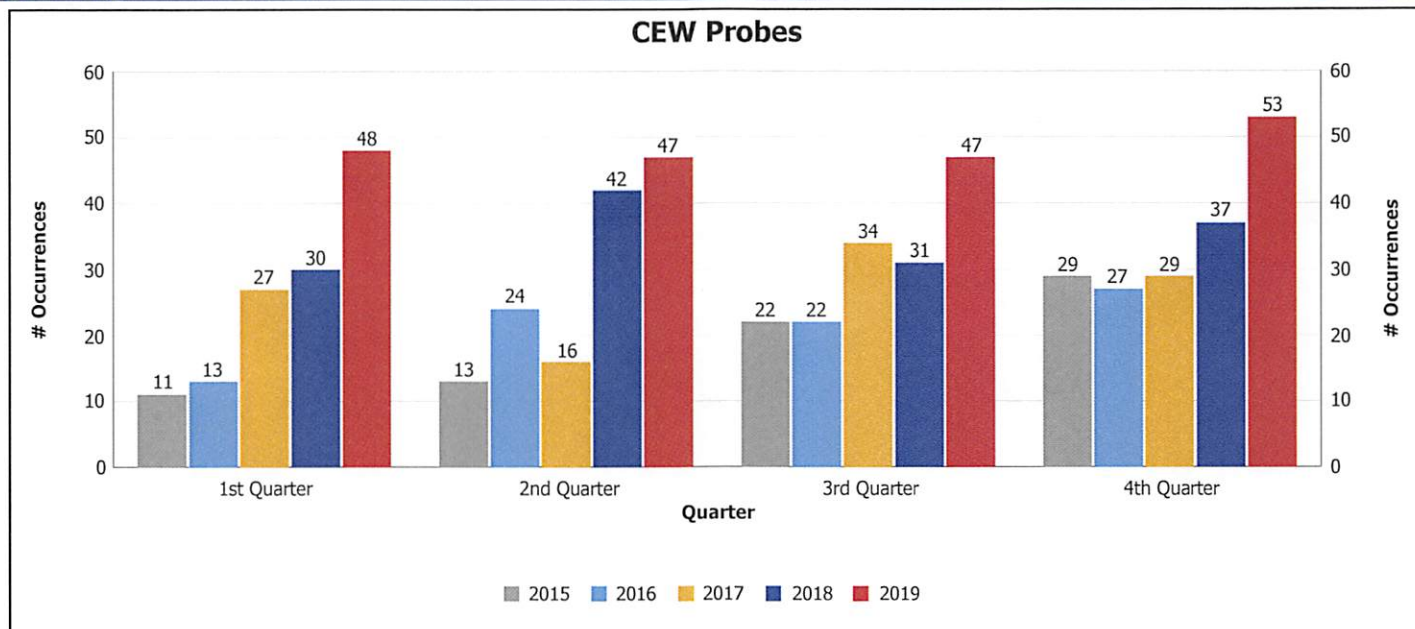


"Presence/Laser" refers to when the CEW is removed from the holster and displayed either by mere presence, or with the laser sight activated and pointed at a subject (no actual deployment of the weapon occurs in this fashion).

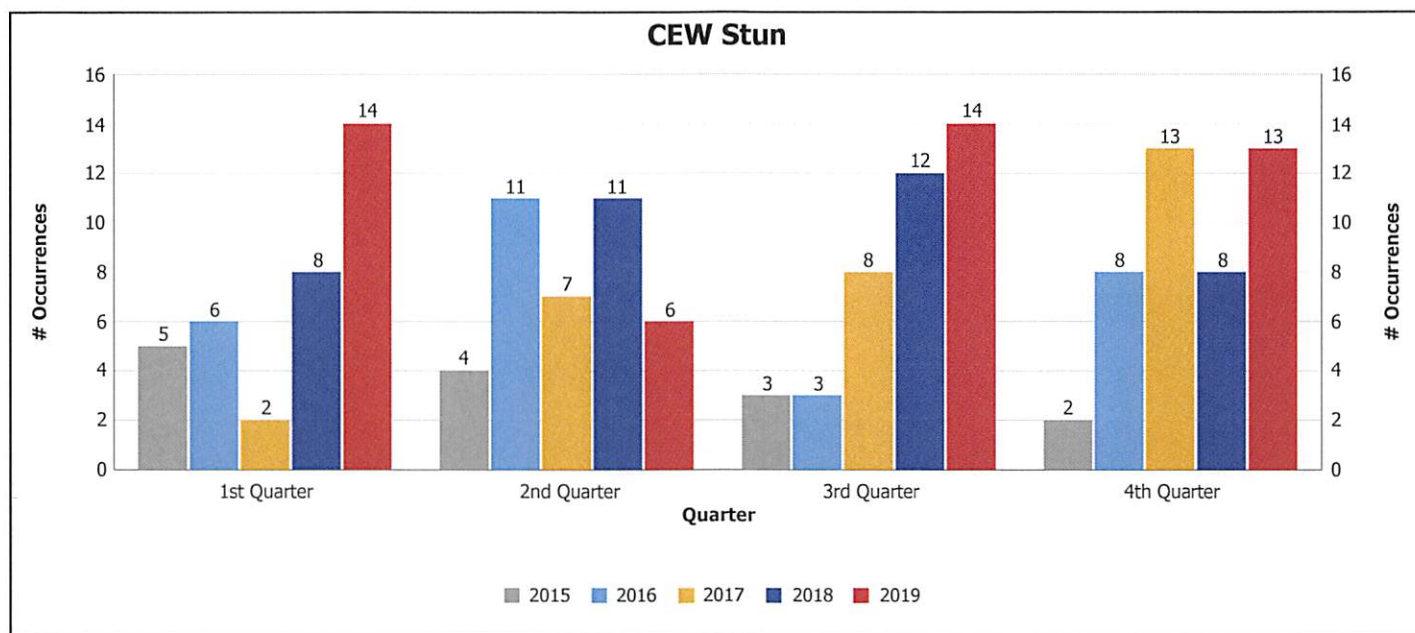


Control Tactics Reports Use of Force Quarterly Report 2019 Dec

Report Source:
EPROS Control Tactics
Run By: Larry Snidal



"Probes" refers to when 2 barbed probes are discharged from the CEW cartridge at a suspect.



"Stun" refers to when the CEW is deployed directly against the subject as a pain compliance technique.

This also encompasses a situation where there may be more than one deployment (ie. Presence is ineffective, with Probes subsequently deployed).

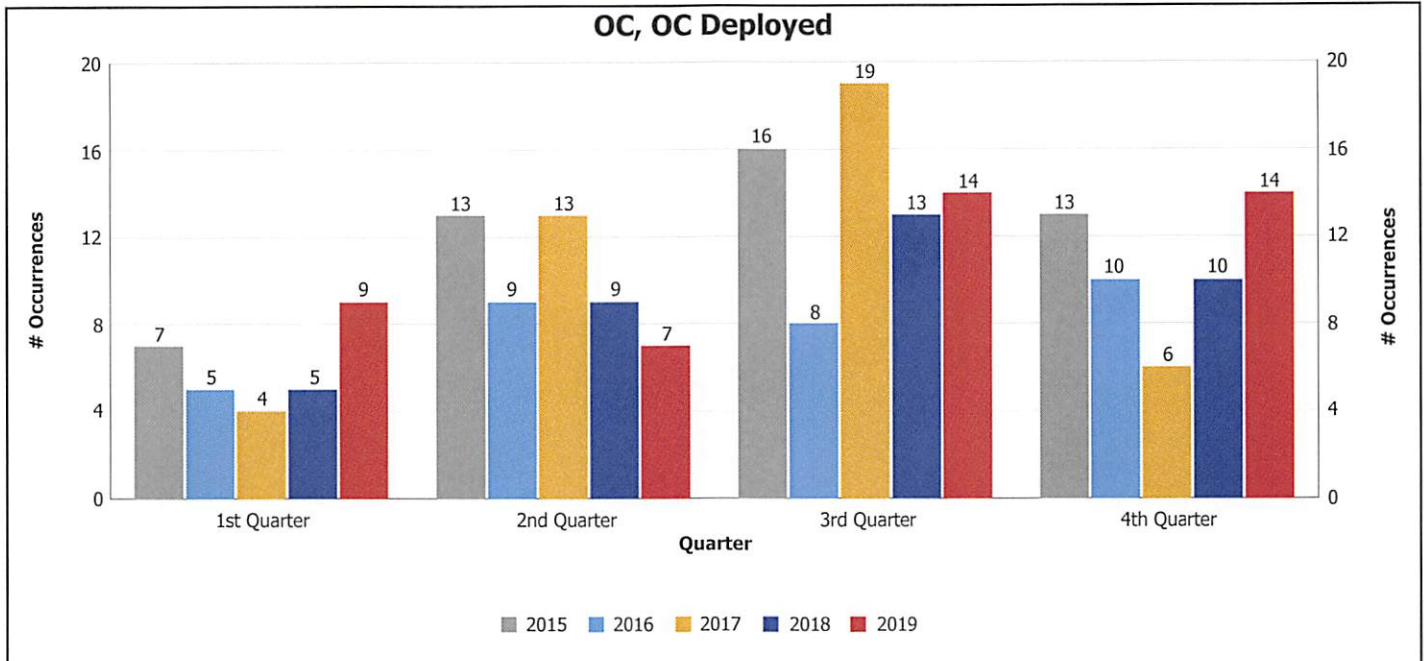


Control Tactics Reports Use of Force Quarterly Report 2019 Dec

Report Source:
EPROS Control Tactics
Run By: Larry Snidal

Geographic Division: City Wide District: All Districts
Report Type: Person and Tactical Entry Team
Based on Occurrence Reported Date

Information as at Date:
3 Feb 2020 23:59



OC Spray is classified as an Intermediate Weapon

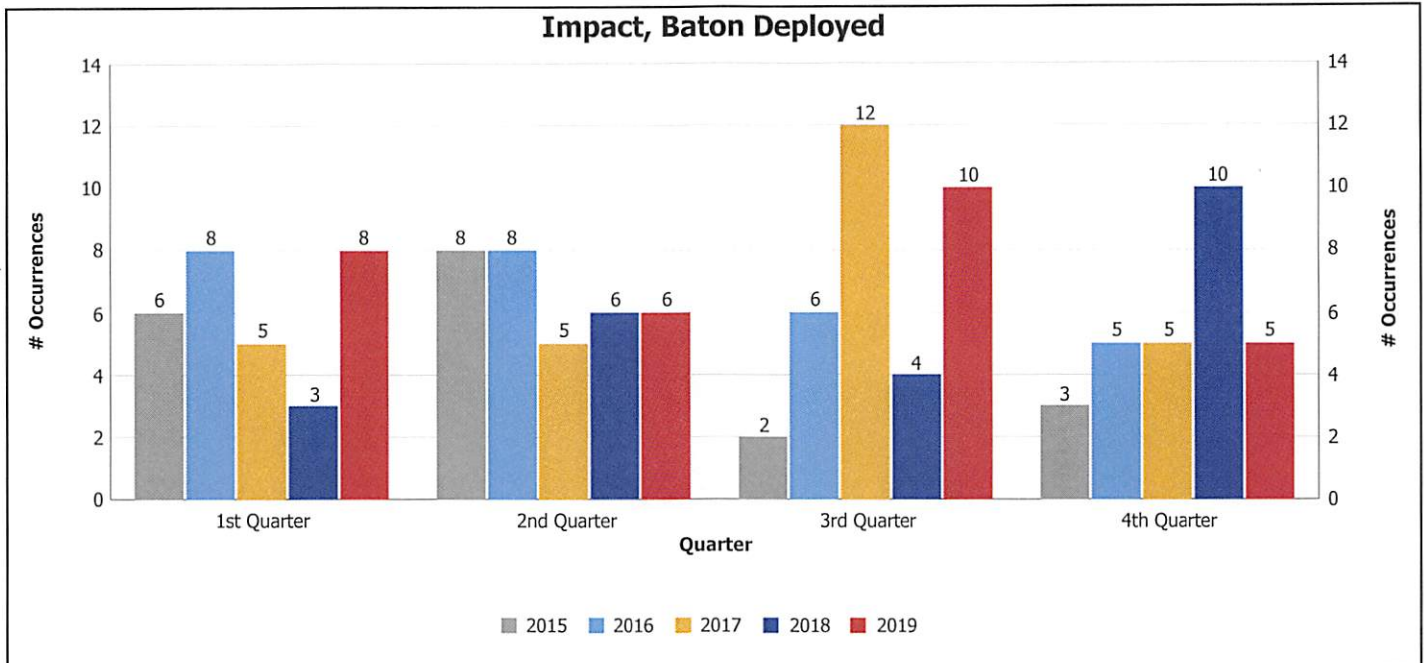


Control Tactics Reports Use of Force Quarterly Report 2019 Dec

Report Source:
EPROS Control Tactics
Run By: Larry Snidal

Geographic Division: City Wide District: All Districts
Report Type: Person and Tactical Entry Team
Based on Occurrence Reported Date

Information as at Date:
3 Feb 2020 23:59



Batons are classified as an Intermediate Weapon

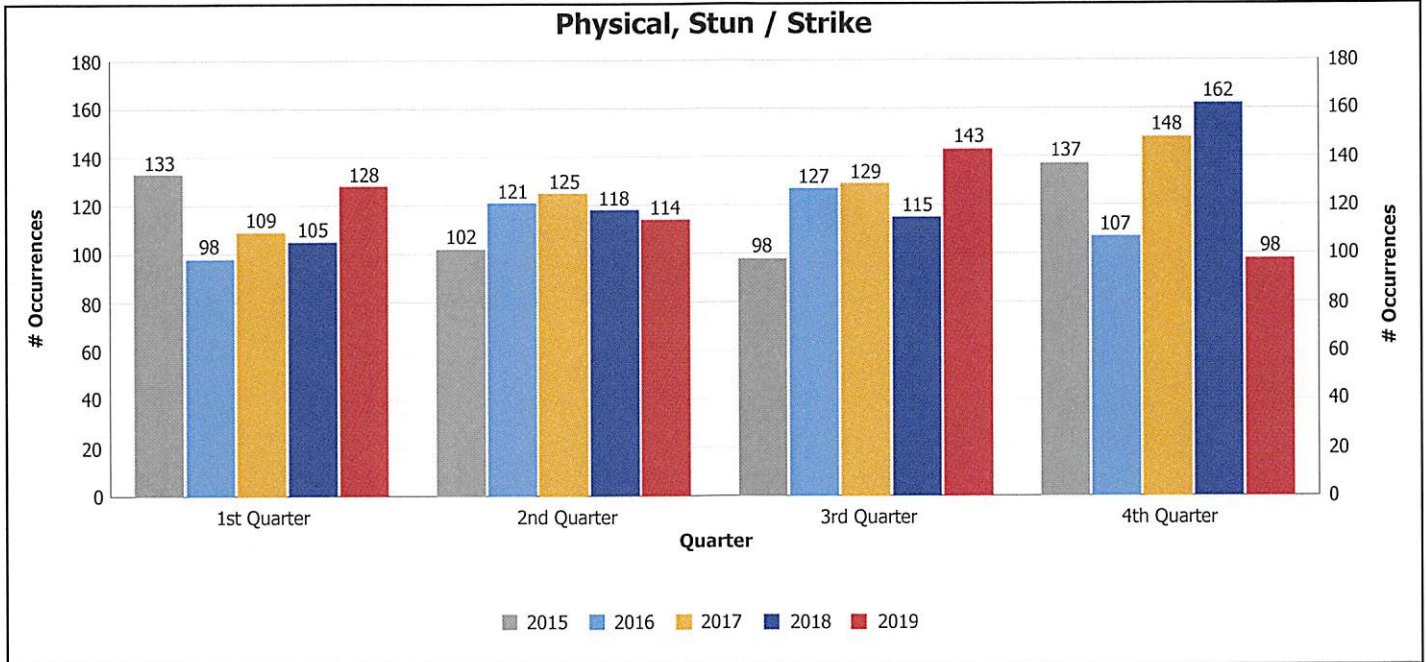


Control Tactics Reports Use of Force Quarterly Report 2019 Dec

Report Source:
EPROS Control Tactics
Run By: Larry Snidal

Geographic Division: City Wide District: All Districts
Report Type: Person and Tactical Entry Team
Based on Occurrence Reported Date

Information as at Date:
3 Feb 2020 23:59



"Stunning" refers to a technique that temporarily distracts a suspect during the attempt of gaining physical control; open hand strike and a knee strike. For the purposes of this report Stuns and Strikes are combined

"Strike" refers to the following: punch, kick, elbow, and knee strikes.



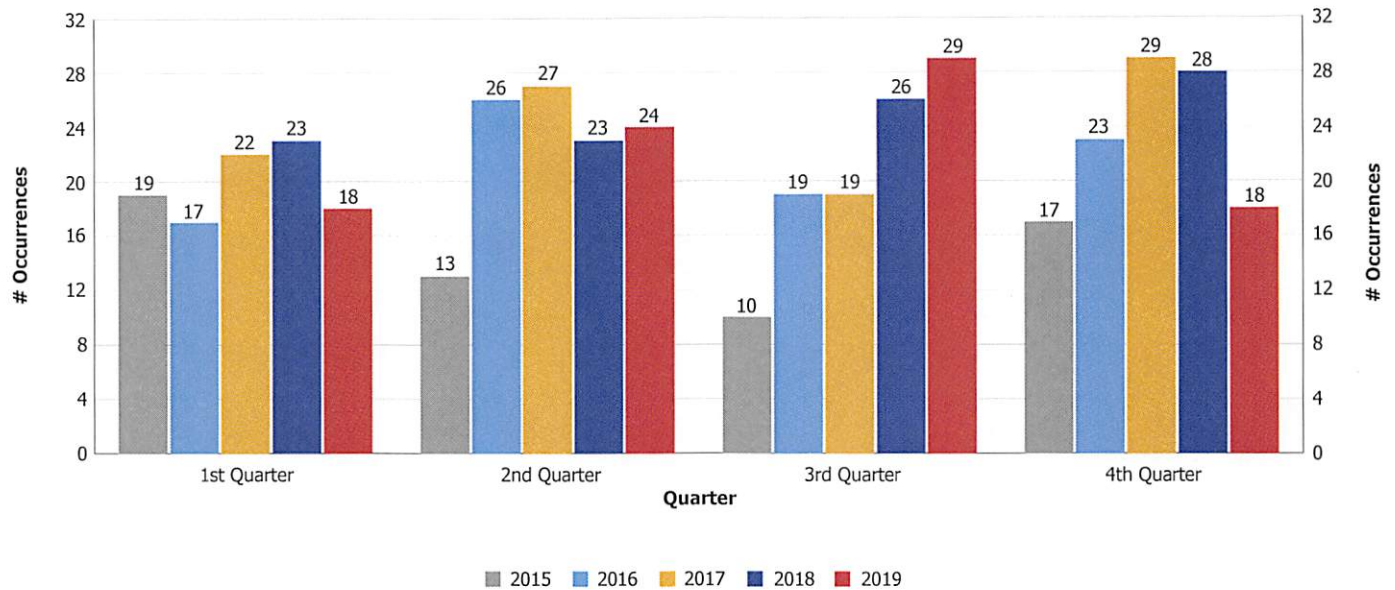
Control Tactics Reports Use of Force Quarterly Report 2019 Dec

Report Source:
EPROS Control Tactics
Run By: Larry Snidal

Geographic Division: City Wide District: All Districts
Report Type: Person and Tactical Entry Team
Based on Occurrence Reported Date

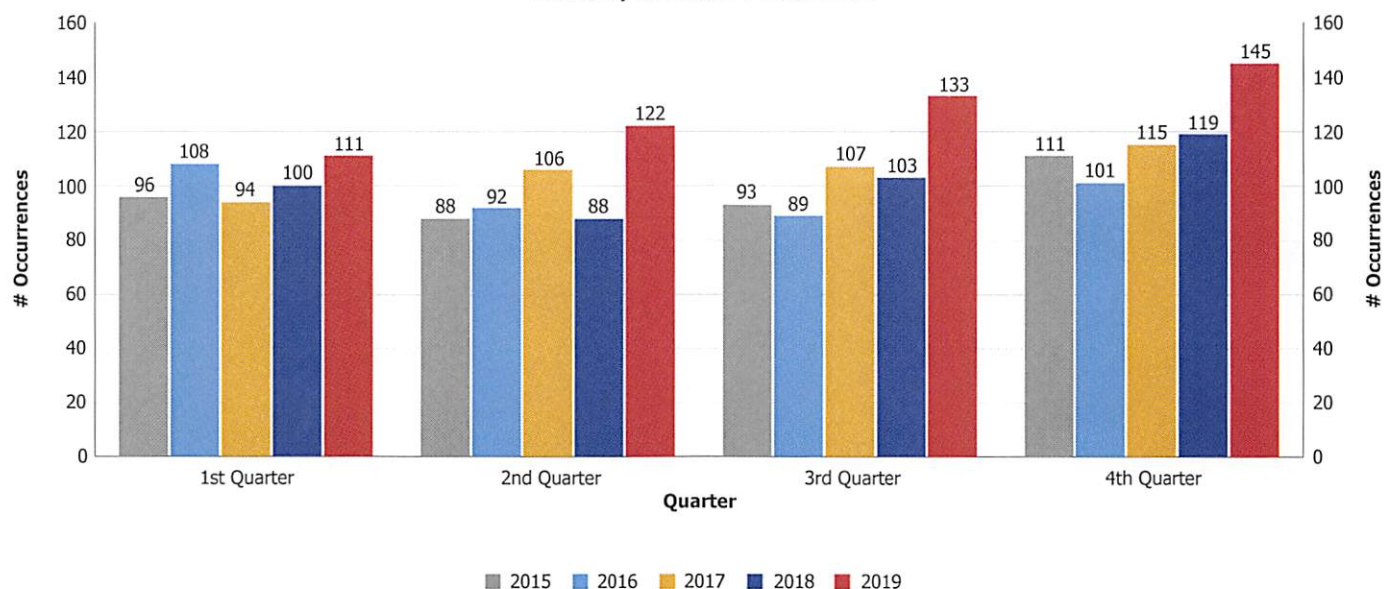
Information as at Date:
3 Feb 2020 23:59

Canine, Canine Contact



"Contact" refers to when a Canine Unit successfully apprehends a suspect using physical force by the dog.

Canine, Canine Presence



"Presence" refers to when a Canine Unit successfully controls a suspect using the presence of the dog.



Control Tactics Statistics 2019 Year

Presented for Information
Edmonton Police Commission
March 19, 2020

Larry Snidal, Firearms & Ballistics Analyst
Inspector Trevor Hermanutz, Professional Development Branch



Control Tactics Report Process

2019

264,260 Police files

2,363 Use of Force Occurrences

**Percentage of calls for service with use of force
occurrences: 0.894%**



Total Use of Force Comparison

Jan-Dec	2017	2018	2019	% Change 2018-2019
Use of Force Occurrences	2508	2374	2363	-0.5%
Control Tactics Reports	4288	4071	3926	-3.6%
Police files	261,850	262,834	129,624	0.5%



Changes From 2018

Jan-Dec

Category	Change (# of Occurrences)	% Change
Police files	1426	0.5%
Conducted Energy Weapons (Probes)	55	39.3%
Conducted Energy Weapons (Stun)	8	20.5%
Canine Contact	-11	-11.0%
Use of Force Occurrences	-11	-0.5%
Use of Force Reports	-145	-3.6%
Police Custodies(Arrests)	-4920	-10.6%



Questions?