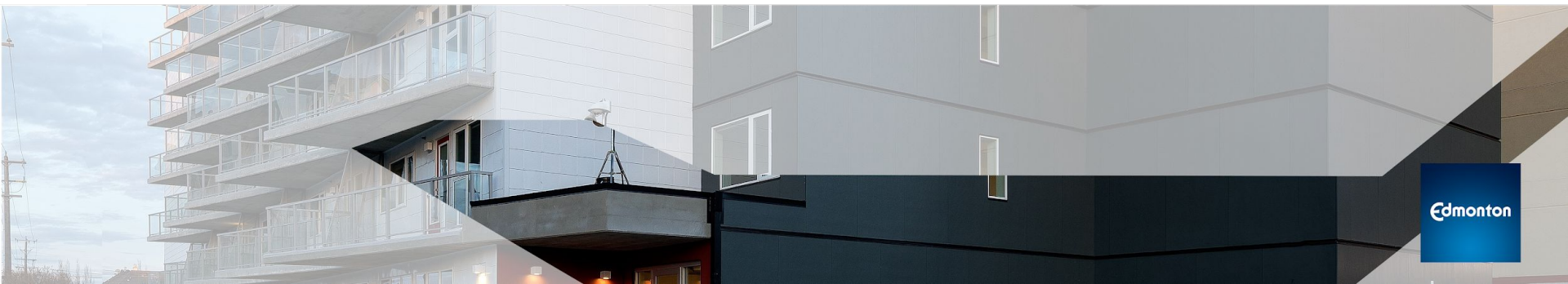




Affordable Housing & Homelessness

Update from the City of Edmonton

November 21, 2019



Edmonton Housing Need

48 550 low income renter households in Edmonton spent more than 30% of their before tax annual income on shelter (core housing need)

20 395 households in Edmonton earn less than \$20,000 per year and spend more than 50% of their before tax annual income on shelter (extreme housing need)

>6000 households on Capital Region Housing's affordable housing waitlist

~50 000 units = current supply gap





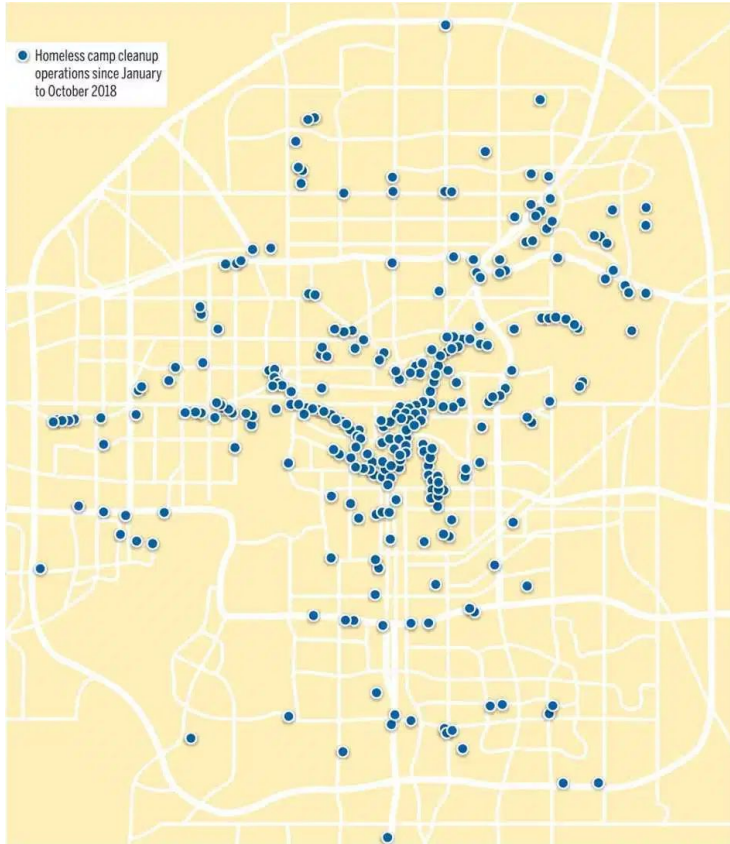
Edmonton's Homeless Population

As of October 2019, **1,729** individuals were experiencing **chronic homelessness**. Of those, **63 percent** were Indigenous and **456** were sleeping rough or “unsheltered” in places unfit for human habitation.

Complexity of Need

- Individuals experiencing chronic homelessness typically have complex, long-term health conditions such as *mental illness*, *physical disabilities* and *substance use disorders* and are still dealing with significant trauma or abuse.
 - 41% of people on the By Names List reported having a combination of co-occurring, severe and persistent physical health, mental health, and substance use conditions.
- Once chronically homeless, it is incredibly challenging for those individuals to get back into housing and staying housed.

Impacts on the City of Edmonton



4004: YTD complaints regarding encampments
(up from **1161** in 2018)

\$1.8m: The cost of homeless encampment clean up
in Edmonton annually

\$70 - \$110k: Per homeless person, using
emergency services

\$14 - \$22 k: To house someone experiencing
homelessness through Housing First

Business & Community Impacts



Social disorder related to homelessness has an **immediate** impact on local businesses. Challenges related to homelessness include:

- Fears of safety - aggression/violence
- Businesses being used for shelter or warmth
- Perception of disorder
- Public intoxication
- People sleeping on the street



Progress to Date

Edmonton has emerged as a leader in homeless-serving system planning work, and has been recognized as paving the way internationally.

Since 2009, Edmonton has:

- **REDUCED** our homeless population by **43%**
- **HOUSED 9,700** Edmontonians, leading all other Canadian cities
- **SAVED** an estimated **\$920 million** in health and justice system costs

Barriers to Continued Progress

- 1) Lack of low-barrier shelter options
- 2) Difficulty housing unsheltered population
- 3) Insufficient supply of housing geared to people with complex needs



Solution: Integrated System Response

Encampment Response Team (September 2019)

- Piloted a coordinated enforcement and clean-up approach to enable concurrent outreach and housing efforts by multiple partner organizations in encampments.
- October 16 to date: 73 individuals connected to housing teams, **9 individuals housed** in less than a month.

Next steps: establish scheduled, coordinated responses between enforcement and housing teams to **maximize successful housing outcomes** while preventing the establishment of high risk encampments.

Solution: Lower Barriers to Shelter

Work with Government of Alberta and shelter providers to address barriers to accessing shelter identified by people experiencing homelessness

- Unsafe/perception of safety
- Lack of privacy/dignity
- Hygiene
- Banning practices
- Lack of storage space
- Inability to stay with partners/pets
- Too institutional for people with historical trauma

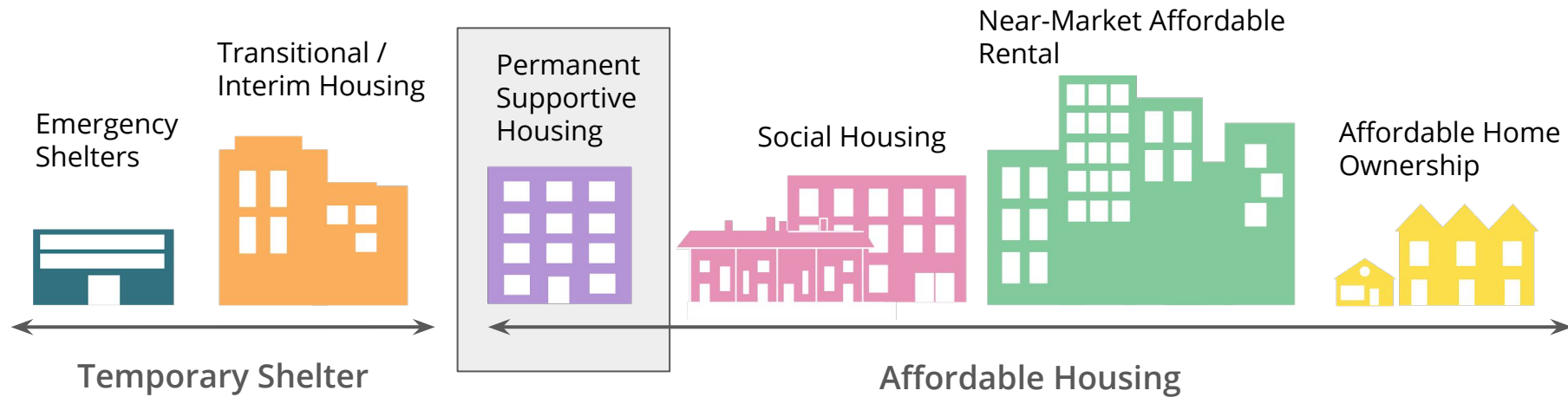


Solution: Bridge Housing

Bridge housing is short-term, continuous stay accommodation for individuals awaiting placement into permanent housing.



Solution: Permanent Supportive Housing



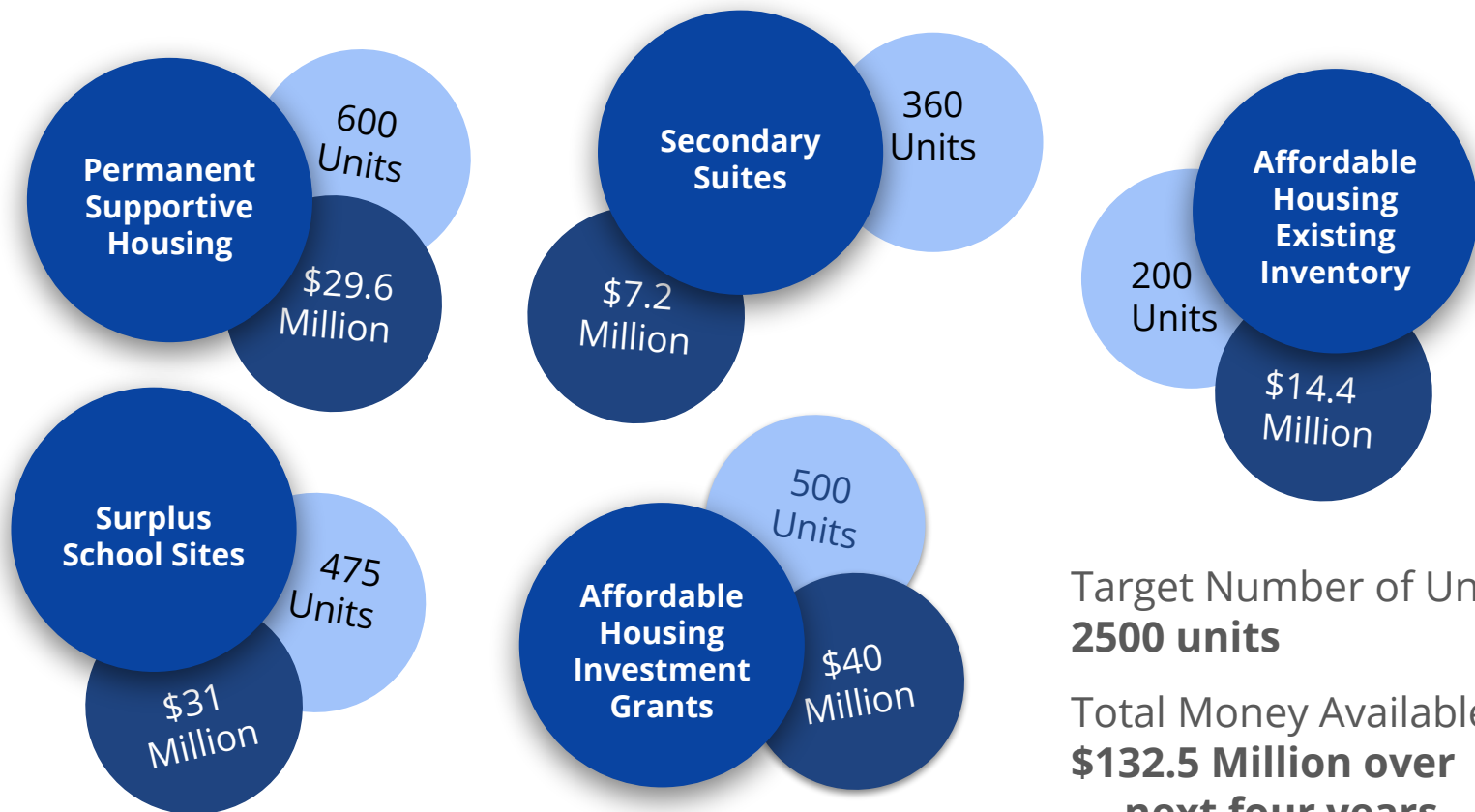
*Goal: **900** units of permanent supportive housing by **2024**.*

Strategic Investment Required

Year

Government Level	2020	2021	2022	2023	2024	2025	2026	Total
City of Edmonton (Capital)	\$6 M	\$6.1 M	\$6.3 M	\$6.2 M	\$6.5 M	\$6.4 M	\$ -	\$37.5 M
Government of Canada (Capital)	\$12.8 M	\$13.2 M	\$13.5 M	\$13.3 M	\$13.8 M	\$13.6 M	\$ -	\$80.2 M
Government of Alberta (Capital)	\$19.8 M	\$20.3 M	\$20.8 M	\$20.5 M	\$21.4 M	\$21 M	\$ -	\$124 M
(Operating)	\$0	\$4.2 M	\$8.5 M	\$13.1 M	\$17.4 M	\$20.9 M	\$24.1 M	
Total Capital								\$241.7
Total Units in Operation	--	150	300	450	600	750	900	900

Affordable Housing Investment Plan



Target Number of Units:
2500 units

Total Money Available:
**\$132.5 Million over
next four years**

Developments Already Underway



*Thank you.
Questions?*

