



## EDMONTON POLICE SERVICE

### REPORT TO THE EDMONTON POLICE COMMISSION

DATE: 2016 August 09

SUBJECT: Edmonton Police Service Control Tactics Statistics  
2016 January – June Report

---

#### RECOMMENDATION:

That this report be received for information.

#### INTRODUCTION:

The Edmonton Police Service (EPS) submits two reports annually to the Edmonton Police Commission that outline all instances of reported use of force. One report provides a statistical summary of use of force events that occurred during the first half of the year and the second report provides a statistical summary of the entire year.

The information contained in this report was generated using statistical data captured from electronic Control Tactics Reports for occurrences with reported dates between 2016 Jan 01 and 2016 Jun 30. This report will also include a comparison of the current use of force data with previous data.

#### BACKGROUND:

The EPS captures use of force data through its electronic Control Tactics Reports. Control Tactics Reports are submitted after a police officer utilizes force where one or more of the following circumstances are present:

1. Injury resulting to any person;
2. Force used was higher than empty hand (soft) control, which is used for cooperative handcuffing;
3. Use of control tactics such as stunning techniques, direct mechanical techniques, chemical agents (O.C. spray), conducted energy weapon (CEW), control instruments, impact weapons, special impact munitions;
4. Firearm was drawn, displayed or pointed;
5. In the opinion of the investigating member and/or supervisor, unusual circumstances exist that necessitate the submission of the report.

## **COMMENTS/DISCUSSION:**

There were 1127 control tactics occurrences in the first half of 2016, 4.1% lower than 2015, this decrease occurred at the same time the EPS saw an increase in both occurrences as well as arrests. There were 2042 control tactics forms submitted in 2016 as compared to 2163 in 2015, a decrease of 5.6%. The largest % change came in Conducted Energy Weapons (CEW) used in stun mode which saw an increase of 88.9 % or 8 individual occurrences, all of which were reviewed for patterns as well as potential learning teaching opportunities.

The reason that the number of Control Tactics Reports (in the chart below) are higher than the number of occurrences is due to the EPS policy requirement for every officer, involved in the use of force, to submit a Control Tactics Report. As well, more than one technique could be used at any one occurrence and different members on the scene may use different levels of force.

<b>Jan - JUN</b>	<b>2011</b>	<b>2012</b>	<b>2013</b>	<b>2014</b>	<b>2015</b>	<b>2016</b>	<b>Change 2015-2016</b>
Occurrences	1021	1005	961	993	1175	1127	-4.1%
Control Tactics Reports	1844	1848	1809	1681	2163	2042	-5.6%

In late 2010, the EPS recognized that the need for engaged supervision is a critical link in the Reasonable Officer Response process and implemented a service wide system to ensure supervisory oversight and review of all reportable use of force events. This process divided use of force events into two categories for review. Generally, Category I reviews involve reportable uses of force of a minor nature and Category II reviews are those involving a higher level or those circumstances where a supervisor decides a Category II review may be warranted.

Note: The data from incidents that require a 46.1 notification to the Director of Law Enforcement, which get assigned to the Alberta Serious Incident Response Team (ASIRT), do not form part of this report.

### **Comparative Analysis of Category I and Category II Occurrences**

<b>Occurrences</b>	<b>2011</b>	<b>2012</b>	<b>2013</b>	<b>2014</b>	<b>2015</b>	<b>2016</b>	<b>Change 2014-2015</b>
Category I	551	552	540	579	698	674	-5.0%
Category II	470	453	421	414	477	453	-4.1%
Category II %	46.0%	45.1%	43.8%	41.7%	40.6%	40.2%	-0.4%

### **Comparative Analysis of Category I and Category II Control Tactics Reports**

<b>Control Tactics Reports</b>	<b>2011</b>	<b>2012</b>	<b>2013</b>	<b>2014</b>	<b>2015</b>	<b>2016</b>	<b>Change 2015-2016</b>
Category I	1156	1228	1229	1088	1469	1365	-7.1%
Category II	688	620	580	593	694	677	-2.4%
Category II %	37.3%	33.5%	32.1%	35.3%	32.1%	33.2%	1.1%

The two previous tables show that the majority of Occurrences are Category I occurrences which consist of displays of force, (Canine Presence ,CEW Presence or Firearms Low Ready) and the lowest levels of hands on control such as holding/escort positions and joint locks. They also show that 66.8% of Control Tactics Reports in the first half of 2016 did not rise above the threshold for a Category I review.

By grouping use of force events into Category I and Category II we can see that overall the level of force used in 2016 is generally consistent with 2015 .

### **CONCLUSION:**

The EPS introduced Reasonable Officer Response to assist in providing a professional and defensible use of force framework. This is premised on basing the use of force on the standard of "objective reasonableness" and includes a supporting foundation based upon:

1. Lawful and professional presence,
2. Tactical communications, and
3. Tactical considerations.

EPS recognized that the need for engaged supervision involving use of force events is critical. Supervisory reviews are a requisite step in the Reasonable Officer Response process; further, they provide guidance and mentorship to the membership. This resulted in the implementation of service wide protocols following all EPS reportable use of force events which included professional awareness, thorough reporting and supervisory oversight review.

### **ADDITIONAL INFORMATION ATTACHED:**

This report contains the following attachments:

- Attachment 1 - Comparison of the various control tactics that were utilized (2015 vs. 2016);
- Attachment 2 - Table depicting the ascending order of the control tactics utilized over the first six months of 2016;
- Attachment 3 – The top ten Computer Aided Dispatch event types where force was used and the top ten EPS event types where force was used;
- Attachment 4 - A monthly comparison of Control Tactics Report occurrences and reports in 2016;
- Attachment 5 - A monthly comparison depicting the geographical location of the various control tactics occurrences. *This is a comparison of the geographical location of the use of force and is not a reflection of the use of force by individual Divisions, Sections, Units, etc;*
- Attachment 6 - A quarterly comparison of the control tactics utilized since the implementation of electronic reporting.

Written by: Larry Snidal  
Training Section



Approved by: A/Inspector Bart Lawczynski  
Professional Development Branch



Approved by: Superintendent Dennis Jubinville  
Human Resources Division



Approved by: A/Chief Admin Officer Brian Roberts  
Corporate Services Bureau



Chief of Police: \_\_\_\_\_



Date: \_\_\_\_\_

AUG 30 2016



# Occurrences (Control Tactics)		January	February	March	April	May	June	Totals
Canine Contact*	2015	6	8	5	3	6	4	32
	2016	8	6	3	3	13	10	43
	Change	2	-2	-2	0	7	6	11
	% Change	33.3%	-25.0%	-40.0%	0.0%	116.7%	150.0%	34.4%
Canine Presence	2015	36	35	25	23	22	42	183
	2016	32	38	34	22	33	34	193
	Change	-4	3	9	-1	11	-8	10
	% Change	-11.1%	8.6%	36.0%	-4.3%	50.0%	-19.0%	5.5%
Conducted Energy Weapon (CEW) Presence/Laser	2015	30	18	27	26	37	25	163
	2016	23	25	29	34	42	33	186
	Change	-7	7	2	8	5	8	23
	% Change	-23.3%	38.9%	7.4%	30.8%	13.5%	32.0%	14.1%
Conducted Energy Weapon (CEW) Probes*	2015	6	2	3	2	9	2	24
	2016	4	1	8	5	8	11	37
	Change	-2	-1	5	3	-1	9	13
	% Change	-33.3%	-50.0%	166.7%	150.0%	-11.1%	450.0%	54.2%
Conducted Energy Weapon (CEW) Stun*	2015	2	2	1	1	3	0	9
	2016	1	0	5	1	6	4	17
	Change	-1	-2	4	0	3	4	8
	% Change	-50.0%	-100.0%	400.0%	0.0%	100.0%	NA	88.9%
Firearm, Low Ready	2015	84	61	82	85	74	89	475
	2016	81	56	75	76	72	82	442
	Change	-3	-5	-7	-9	-2	-7	-33
	% Change	-3.6%	-8.2%	-8.5%	-10.6%	-2.7%	-7.9%	-6.9%
Firearm, Pointed*	2015	17	20	22	23	25	22	129
	2016	20	16	10	8	9	15	78
	Change	3	-4	-12	-15	-16	-7	-51
	% Change	17.6%	-20.0%	-54.5%	-65.2%	-64.0%	-31.8%	-39.5%
Baton *	2015	3	0	3	1	4	3	14
	2016	3	3	2	2	3	2	15
	Change	0	3	-1	1	-1	-1	1
	% Change	0.0%	NA	-33.3%	100.0%	-25.0%	-33.3%	7.1%
Impact, Other*	2015	1	1	1	0	2	1	6
	2016	1	1	0	0	0	4	6
	Change	0	0	-1	0	-2	3	0
	% Change	0.0%	0.0%	-100%	0.0%	-100%	300.0%	0.0%

\* Category II Use of Force

# Occurrences (Control Tactics)		January	February	March	April	May	June	Totals
Oleoresin Capsicum (OC) Spray*	2015	3	1	3	3	6	4	20
	2016	1	1	3	2	1	6	14
	Change	-2	0	0	-1	-5	2	-6
	% Change	-66.7%	0.0%	0.0%	-33.3%	-83.3%	50.0%	-30.0%
Takedown*	2015	57	64	63	60	48	43	335
	2016	51	47	47	57	44	66	312
	Change	-6	-17	-16	-3	-4	23	-23
	% Change	-10.5%	-26.6%	-25.4%	-5.0%	-8.3%	53.5%	-6.9%
Disarming Technique	2015	1	1	1	0	0	1	4
	2016	0	2	2	1	1	1	7
	Change	-1	1	1	1	1	0	3
	% Change	-100%	100.0%	100.0%	NA	NA	0.0%	75.0%
Holding Technique	2015	57	65	64	64	53	49	352
	2016	54	48	59	54	60	64	339
	Change	-3	-17	-5	-10	7	15	-13
	% Change	-5.3%	-26.2%	-7.8%	-15.6%	13.2%	30.6%	-3.7%
Joint Manipulation	2015	30	28	30	33	16	24	161
	2016	24	24	26	26	26	26	152
	Change	-6	-4	-4	-7	10	2	-9
	% Change	-20.0%	-14.3%	-13.3%	-21.2%	62.5%	8.3%	-5.6%
Strike*	2015	34	36	37	31	28	27	193
	2016	26	22	25	34	28	36	171
	Change	-8	-14	-12	3	0	9	-22
	% Change	-23.5%	-38.9%	-32.4%	9.7%	0.0%	33.3%	-11.4%
Stun/Distract*	2015	21	17	23	20	14	13	108
	2016	21	15	21	20	18	21	116
	Change	0	-2	-2	0	4	8	8
	% Change	0.0%	-11.8%	-8.7%	0.0%	28.6%	61.5%	7.4%
Communication	2015	187	160	172	183	154	174	1 030
	2016	166	147	163	160	156	181	973
	Change	-21	-13	-9	-23	2	7	-57
	% Change	-11.2%	-8.1%	-5.2%	-12.6%	1.3%	4.0%	-5.5%
Control Tactics Reports	2015	406	328	330	375	350	374	2163
	2016	351	308	348	340	329	366	2042
	Change	-55	-20	18	-35	-21	-8	-121
	% Change	-13.5%	-6.1%	5.5%	-9.3%	-6.0%	-2.1%	-5.6%
Control Tactics Occurrences	2015	217	181	195	208	176	198	1175
	2016	184	165	191	195	183	209	1127
	Change	-33	-16	-4	-13	7	11	-48
	% Change	-15.2%	-8.8%	-2.1%	-6.3%	4.0%	5.6%	-4.1%



## Control Tactics Reports Control Tactics Occurrences for 2016

Report Source:  
EPROS Control Tactics  
Run By: Larry Snidal

Geographic Division: City Wide      District: All Districts  
Report Type: Person and Tactical Entry Team  
Based on Occurrence Reported Date

Information as at Date:  
28 Jul 2016 23:59

# Occurrences	January	February	March	April	May	June	Total
Impact, Specialty Munition		<a href="#">2</a>			<a href="#">1</a>		<a href="#">3</a>
Impact, Other	<a href="#">1</a>	<a href="#">1</a>				<a href="#">4</a>	<a href="#">6</a>
Physical, Disarming Technique		<a href="#">2</a>	<a href="#">2</a>	<a href="#">1</a>	<a href="#">1</a>	<a href="#">1</a>	<a href="#">7</a>
OC, OC Deployed	<a href="#">1</a>	<a href="#">1</a>	<a href="#">3</a>	<a href="#">2</a>	<a href="#">1</a>	<a href="#">6</a>	<a href="#">14</a>
Impact, Baton Deployed	<a href="#">3</a>	<a href="#">3</a>	<a href="#">2</a>	<a href="#">2</a>	<a href="#">3</a>	<a href="#">2</a>	<a href="#">15</a>
CEW, CEW Stun	<a href="#">1</a>		<a href="#">5</a>	<a href="#">1</a>	<a href="#">6</a>	<a href="#">4</a>	<a href="#">17</a>
CEW, CEW Probes	<a href="#">4</a>	<a href="#">1</a>	<a href="#">8</a>	<a href="#">5</a>	<a href="#">8</a>	<a href="#">11</a>	<a href="#">37</a>
Canine, Canine Contact	<a href="#">8</a>	<a href="#">6</a>	<a href="#">3</a>	<a href="#">3</a>	<a href="#">13</a>	<a href="#">10</a>	<a href="#">43</a>
Firearm, Pointed	<a href="#">20</a>	<a href="#">16</a>	<a href="#">10</a>	<a href="#">8</a>	<a href="#">9</a>	<a href="#">15</a>	<a href="#">78</a>
Physical, Stun Technique/Distracton	<a href="#">21</a>	<a href="#">15</a>	<a href="#">21</a>	<a href="#">20</a>	<a href="#">18</a>	<a href="#">21</a>	<a href="#">116</a>
Physical, Joint Manipulation	<a href="#">24</a>	<a href="#">24</a>	<a href="#">26</a>	<a href="#">26</a>	<a href="#">26</a>	<a href="#">26</a>	<a href="#">152</a>
Physical, Strike	<a href="#">26</a>	<a href="#">22</a>	<a href="#">25</a>	<a href="#">34</a>	<a href="#">28</a>	<a href="#">36</a>	<a href="#">171</a>
CEW, CEW Presence/Laser	<a href="#">23</a>	<a href="#">25</a>	<a href="#">29</a>	<a href="#">34</a>	<a href="#">42</a>	<a href="#">33</a>	<a href="#">186</a>
Canine, Canine Presence	<a href="#">32</a>	<a href="#">38</a>	<a href="#">34</a>	<a href="#">22</a>	<a href="#">33</a>	<a href="#">34</a>	<a href="#">193</a>
Physical, Balance Displacement/Takedown	<a href="#">51</a>	<a href="#">47</a>	<a href="#">47</a>	<a href="#">57</a>	<a href="#">44</a>	<a href="#">66</a>	<a href="#">312</a>
Physical, Holding Technique	<a href="#">54</a>	<a href="#">48</a>	<a href="#">59</a>	<a href="#">54</a>	<a href="#">60</a>	<a href="#">64</a>	<a href="#">339</a>
Firearm, Low Ready	<a href="#">81</a>	<a href="#">56</a>	<a href="#">75</a>	<a href="#">76</a>	<a href="#">72</a>	<a href="#">82</a>	<a href="#">442</a>
Physical, Communication	<a href="#">166</a>	<a href="#">147</a>	<a href="#">163</a>	<a href="#">160</a>	<a href="#">156</a>	<a href="#">181</a>	<a href="#">973</a>
Physical, Officer Presence	<a href="#">164</a>	<a href="#">149</a>	<a href="#">167</a>	<a href="#">163</a>	<a href="#">157</a>	<a href="#">176</a>	<a href="#">976</a>

Filters Used: Report Type = Person and Tactical Entry Team

Report #: CTR-1 Control Tactics  
Semi-Annual Reports Updated for  
new divisions (Occurrence)

Report Generated Date: 2016-07-29 3:15 PM

Page: 1





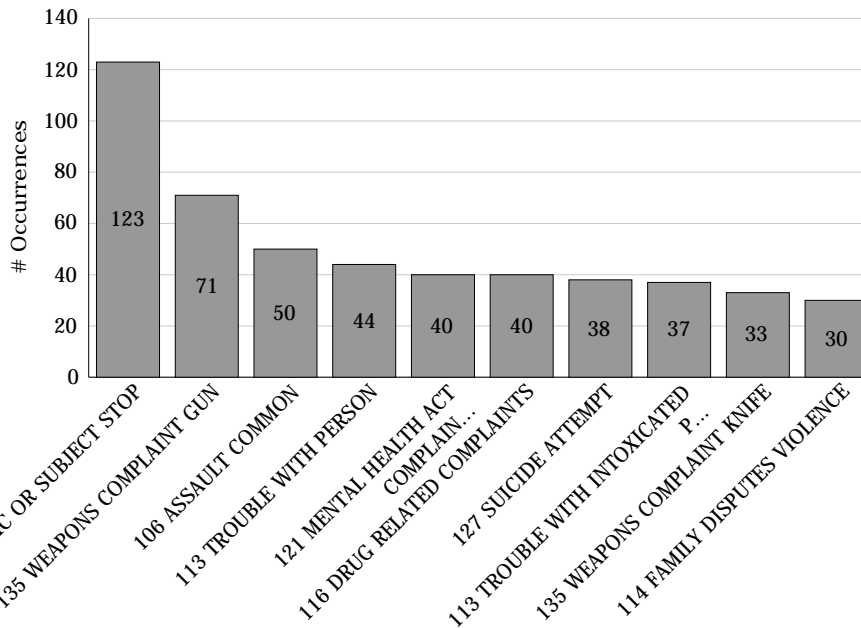
## Control Tactics Reports Control Tactics Occurrences for 2016

Report Source:  
EPROS Control Tactics  
Run By: Larry Snidal

Geographic Division: City Wide District: All Districts  
Report Type: Person and Tactical Entry Team  
Based on Occurrence Reported Date

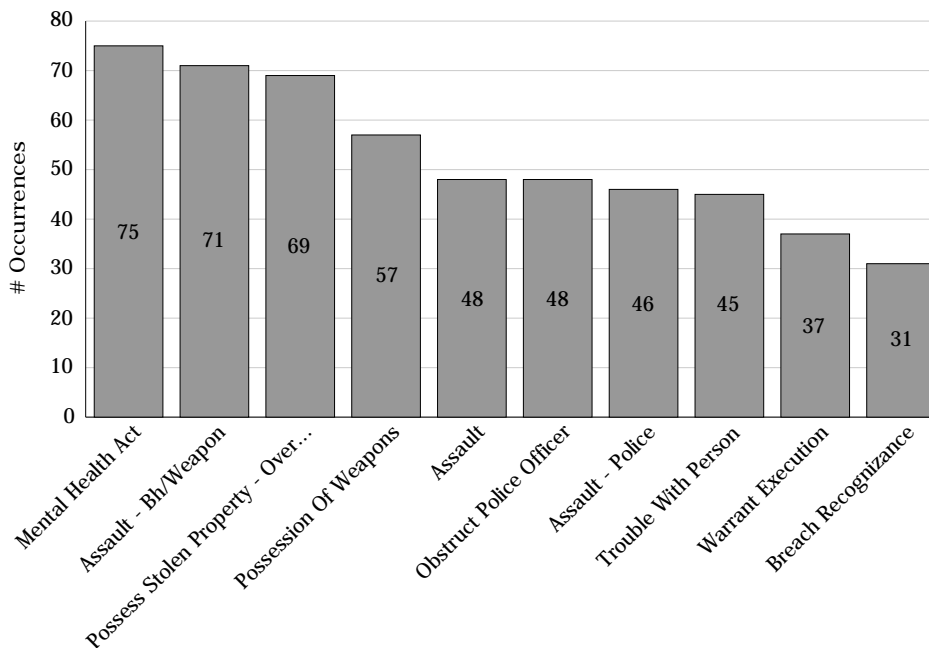
Information as at Date:  
28 Jul 2016 23:59

Top 10 CAD Event Types



	# Occurrences
<a href="#">TRAFFIC OR SUBJECT STOP</a>	123
<a href="#">135 WEAPONS COMPLAINT GUN</a>	71
<a href="#">106 ASSAULT COMMON</a>	50
<a href="#">113 TROUBLE WITH PERSON</a>	44
<a href="#">121 MENTAL HEALTH ACT COMPLAINTS</a>	40
<a href="#">116 DRUG RELATED COMPLAINTS</a>	40
<a href="#">127 SUICIDE ATTEMPT</a>	38
<a href="#">113 TROUBLE WITH INTOXICATED PERSONS</a>	37
<a href="#">135 WEAPONS COMPLAINT KNIFE</a>	33
<a href="#">114 FAMILY DISPUTES VIOLENCE</a>	30

Top 10 Occurrence Types



	# Occurrences
<a href="#">Mental Health Act</a>	75
<a href="#">Assault - Bh/Weapon</a>	71
<a href="#">Possess Stolen Property - Over \$5000</a>	69
<a href="#">Possession Of Weapons</a>	57
<a href="#">Assault</a>	48
<a href="#">Obstruct Police Officer</a>	48
<a href="#">Assault - Police</a>	46
<a href="#">Trouble With Person</a>	45
<a href="#">Warrant Execution</a>	37
<a href="#">Breach Recognizance</a>	31

Filters Used: Report Type = Person and Tactical Entry Team

Report #: CTR-1 Control Tactics  
Semi-Annual Reports Updated for  
new divisions (Occurrence)

Report Generated Date: 2016-07-29 3:15 PM



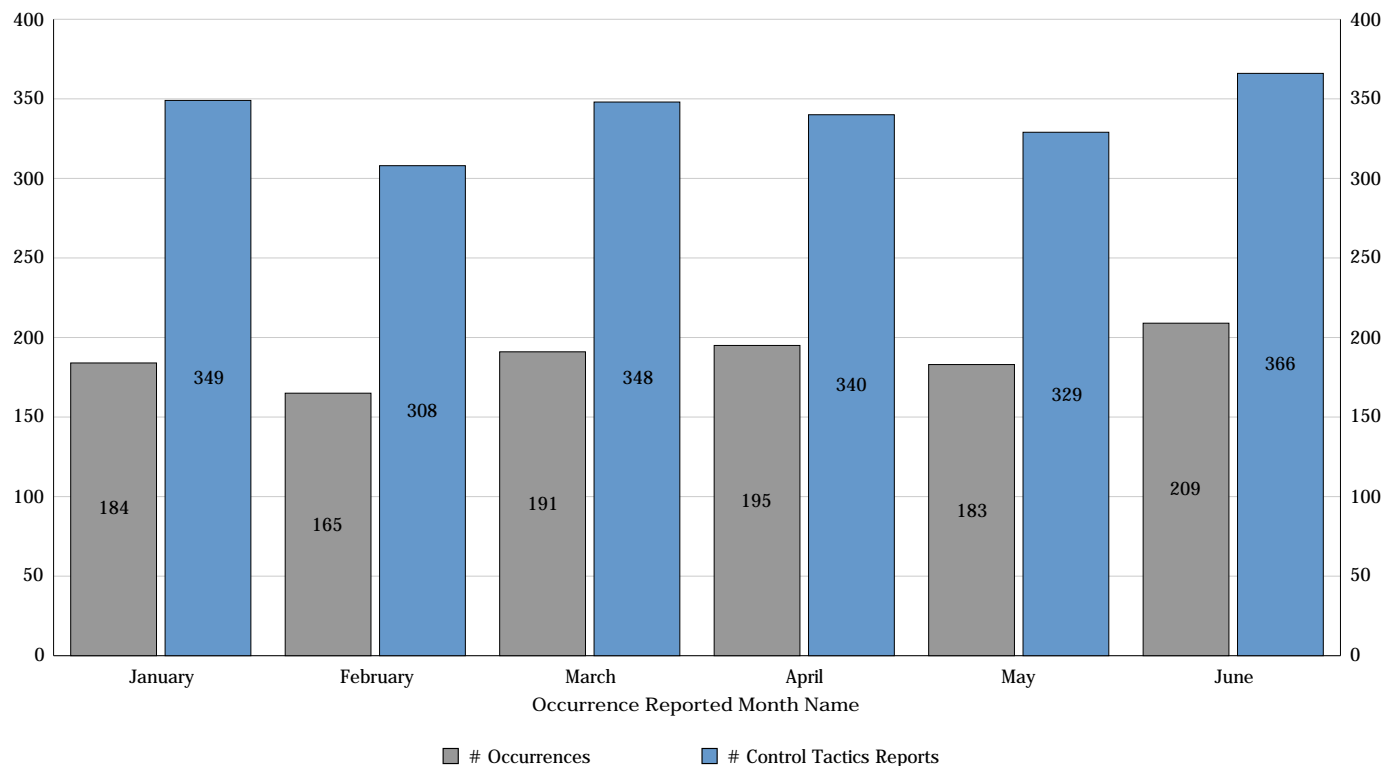


## Control Tactics Reports Control Tactics Occurrences for 2016

Report Source:  
EPROS Control Tactics  
Run By: Larry Snidal

Geographic Division: City Wide      District: All Districts  
Report Type: Person and Tactical Entry Team  
Based on Occurrence Reported Date

Information as at Date:  
28 Jul 2016 23:59



# Occurrences	January	February	March	April	May	June	Total
2016	184	165	191	195	183	209	1,127

# Control Tactics Reports	January	February	March	April	May	June	Total
2016	349	308	348	340	329	366	2,040

\* Multiple Control Tactics Reports may be generated for each occurrence due to multiple officers involved or multiple subjects.

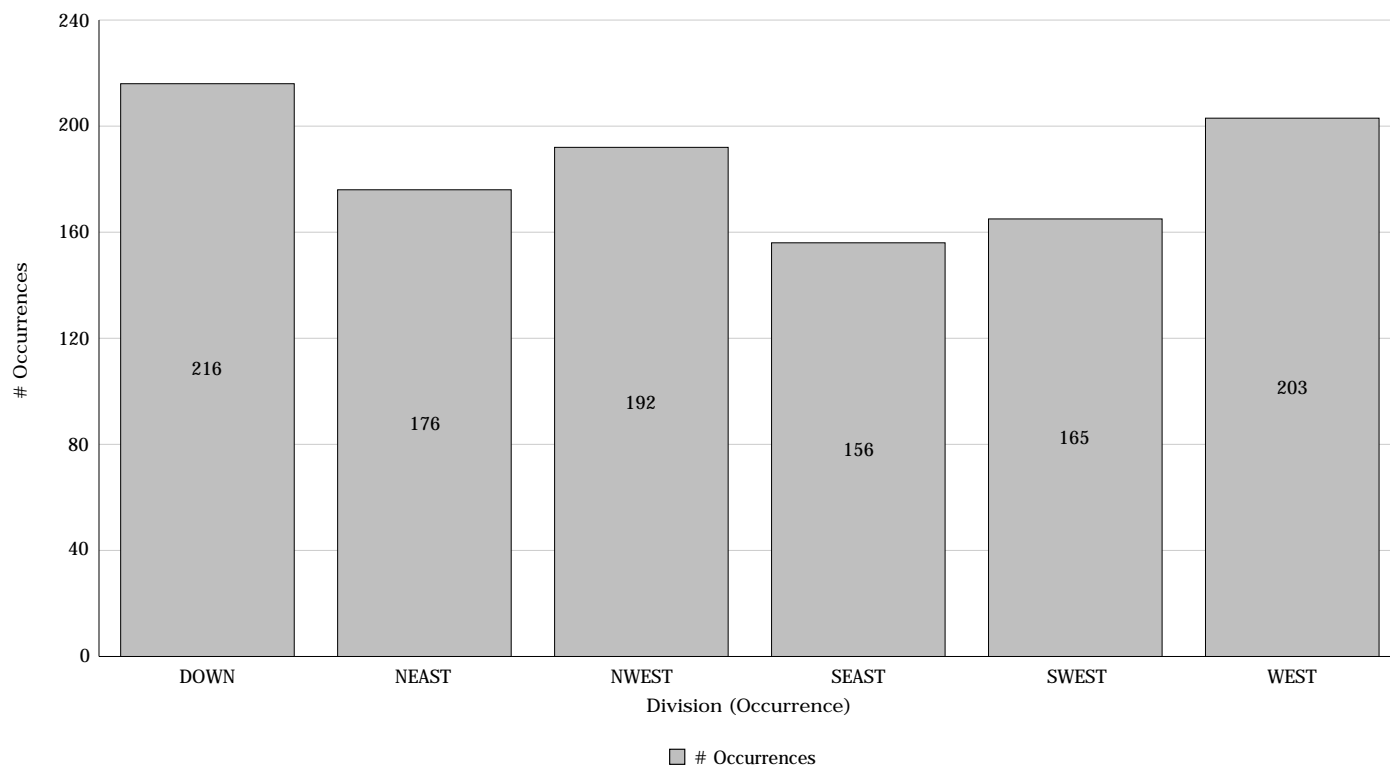


## Control Tactics Reports Control Tactics Occurrences for 2016

Report Source:  
EPROS Control Tactics  
Run By: Larry Snidal

Geographic Division: City Wide District: All Districts  
Report Type: Person and Tactical Entry Team  
Based on Occurrence Reported Date

Information as at Date:  
28 Jul 2016 23:59



# Occurrences	January	February	March	April	May	June	Total
DOWN	<a href="#">34</a>	<a href="#">30</a>	<a href="#">27</a>	<a href="#">38</a>	<a href="#">46</a>	<a href="#">41</a>	<a href="#">216</a>
NEAST	<a href="#">40</a>	<a href="#">27</a>	<a href="#">30</a>	<a href="#">22</a>	<a href="#">25</a>	<a href="#">32</a>	<a href="#">176</a>
NWEST	<a href="#">32</a>	<a href="#">25</a>	<a href="#">32</a>	<a href="#">37</a>	<a href="#">31</a>	<a href="#">35</a>	<a href="#">192</a>
SEAST	<a href="#">20</a>	<a href="#">30</a>	<a href="#">30</a>	<a href="#">26</a>	<a href="#">27</a>	<a href="#">23</a>	<a href="#">156</a>
SWEST	<a href="#">26</a>	<a href="#">23</a>	<a href="#">32</a>	<a href="#">30</a>	<a href="#">25</a>	<a href="#">29</a>	<a href="#">165</a>
WEST	<a href="#">31</a>	<a href="#">30</a>	<a href="#">36</a>	<a href="#">39</a>	<a href="#">27</a>	<a href="#">40</a>	<a href="#">203</a>

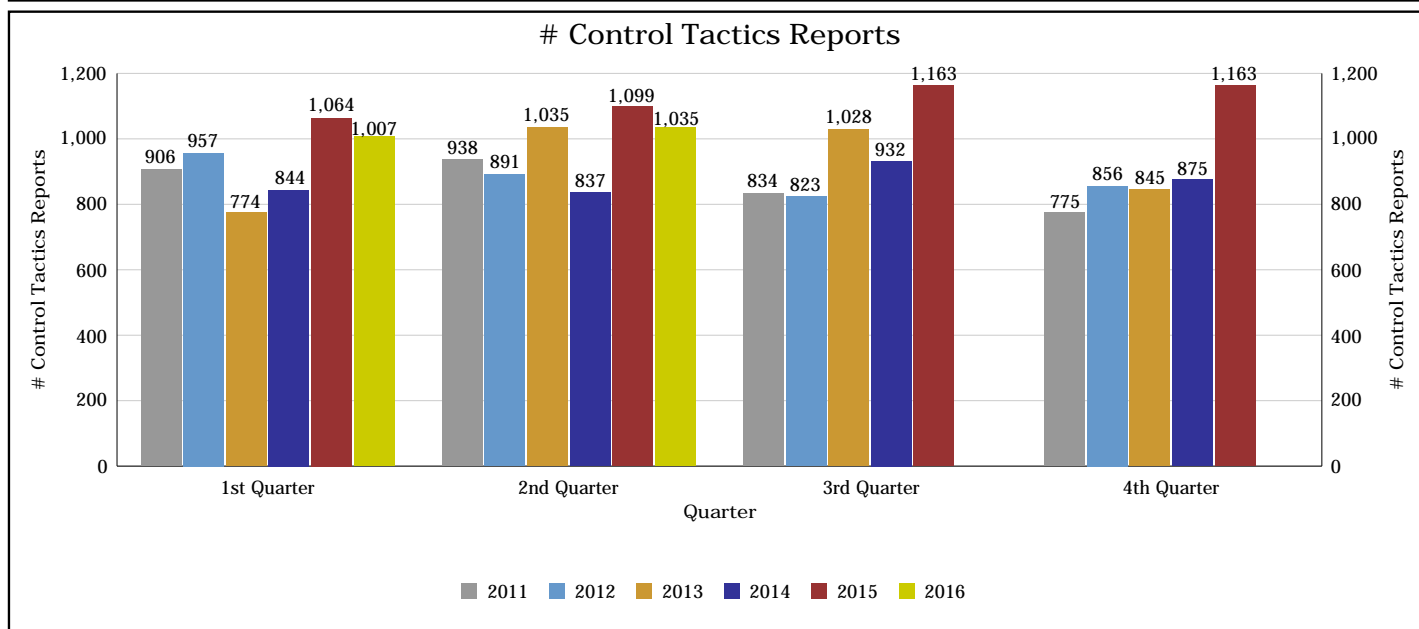
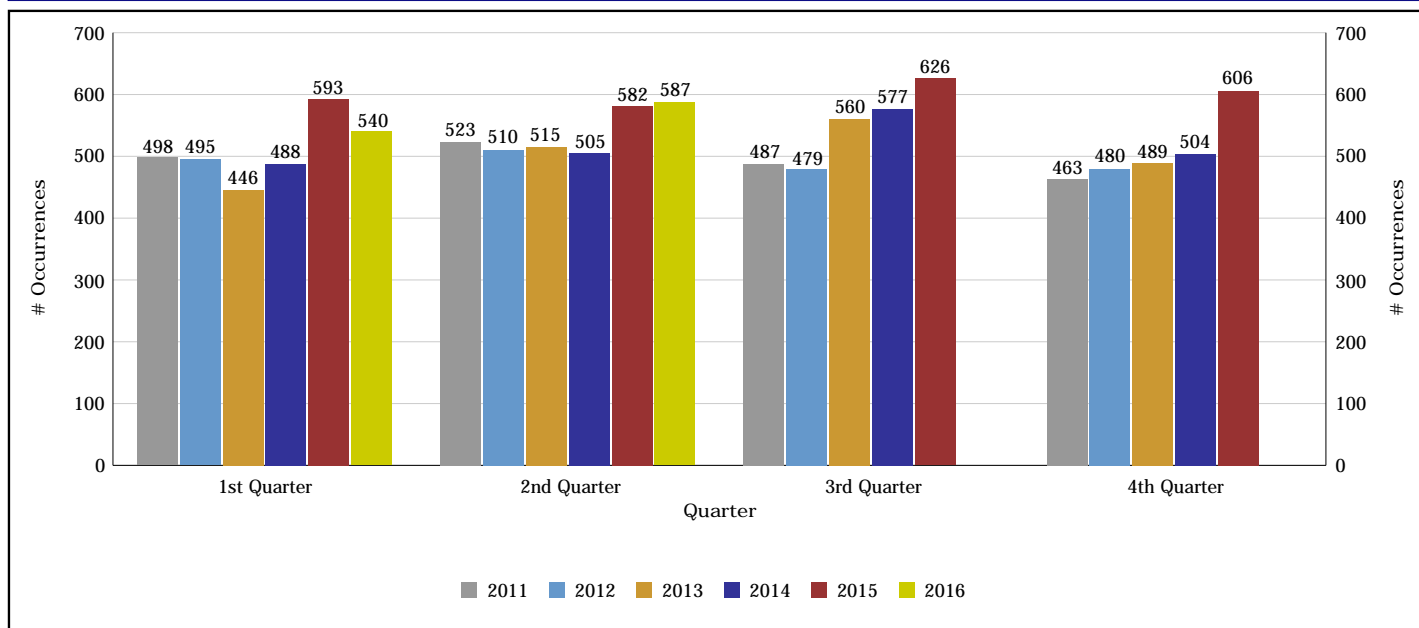


## Control Tactics Reports Use of Force Quarterly Report 2016 Jun

Report Source:  
EPROS Control Tactics  
Run By: Larry Snidal

Geographic Division: City Wide      District: All Districts  
Report Type: Person and Tactical Entry Team  
Based on Occurrence Reported Date

Information as at Date:  
28 Jul 2016 23:59



**Please Note:** In order to present the most accurate and up to date information on Use of Force incidents and deployments, the report will contain all data entered previous to the report. Delays in approving reports mean that information may be received 2 months or more after the incident. This information will be included in future updates and will be reflected in changes to the numbers as reports are received and entered.

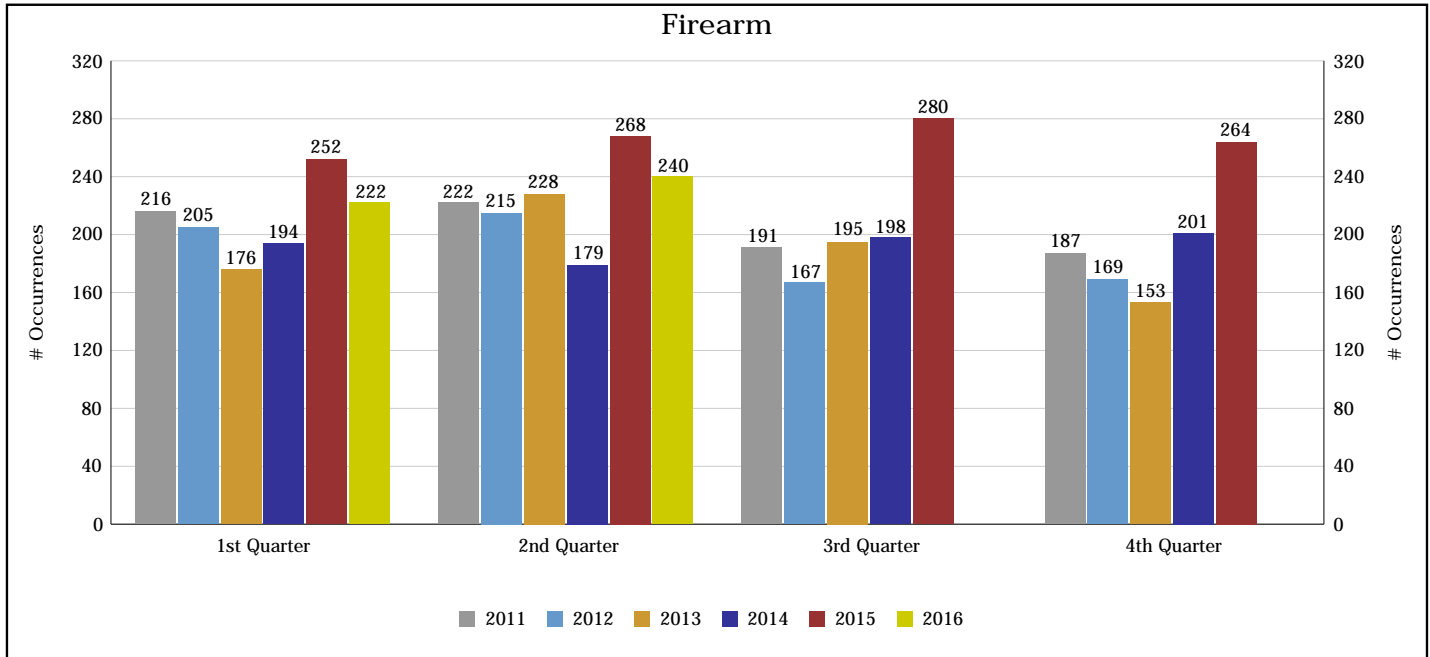


## Control Tactics Reports Use of Force Quarterly Report 2016 Jun

Report Source:  
EPROS Control Tactics  
Run By: Larry Snidal

Geographic Division: City Wide      District: All Districts  
Report Type: Person and Tactical Entry Team  
Based on Occurrence Reported Date

Information as at Date:  
28 Jul 2016 23:59



"Firearm" encompasses the following Police issued firearms: Handguns, Carbines, Shotguns, Rifles, and Tactical Firearms.

"Occurrences" refers to one specific situation where officers responded and utilized their firearm in one of the following methods: low ready position, pointed or fired.

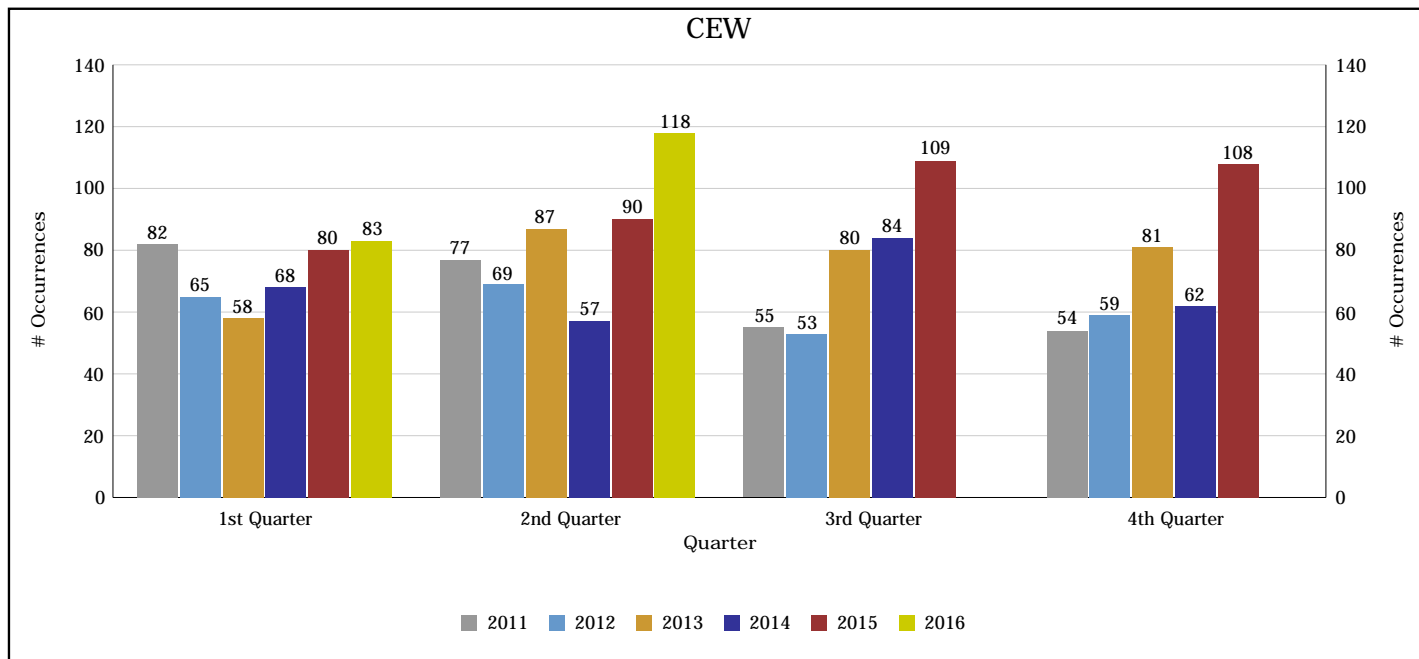


## Control Tactics Reports Use of Force Quarterly Report 2016 Jun

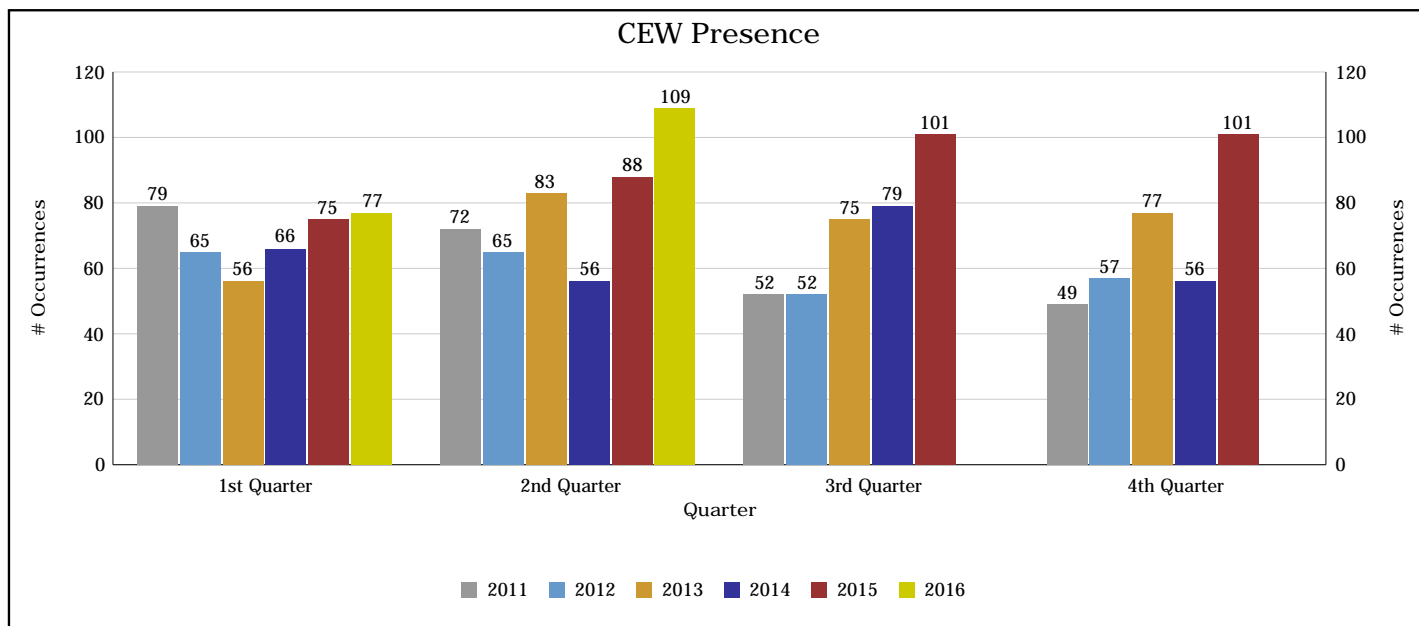
Report Source:  
EPROS Control Tactics  
Run By: Larry Snidal

Geographic Division: City Wide      District: All Districts  
Report Type: Person and Tactical Entry Team  
Based on Occurrence Reported Date

Information as at Date:  
28 Jul 2016 23:59



"CEW" refers to the TASER X26 the current model that the Edmonton Police Service issues: CEW is classified as an Intermediate Weapon

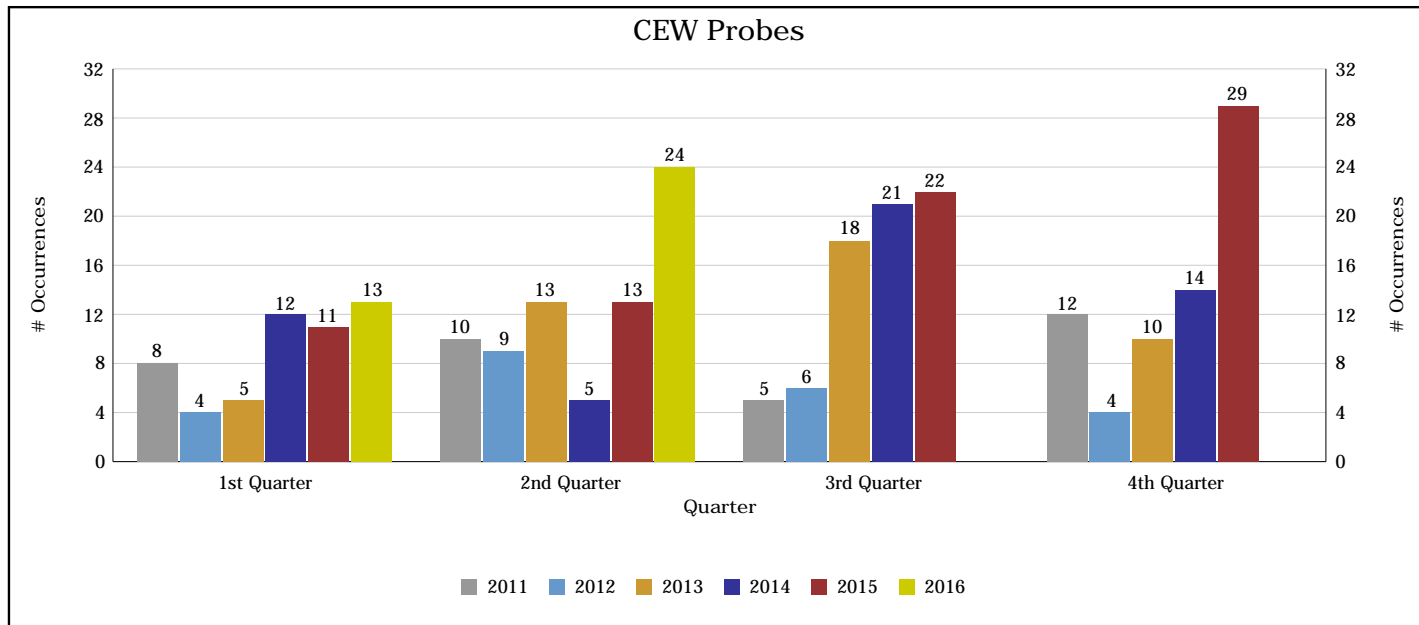


"Presence/Laser" refers to when the CEW is removed from the holster and displayed either by mere presence, or with the laser sight activated and pointed at a subject (no actual deployment of the weapon occurs in this fashion).

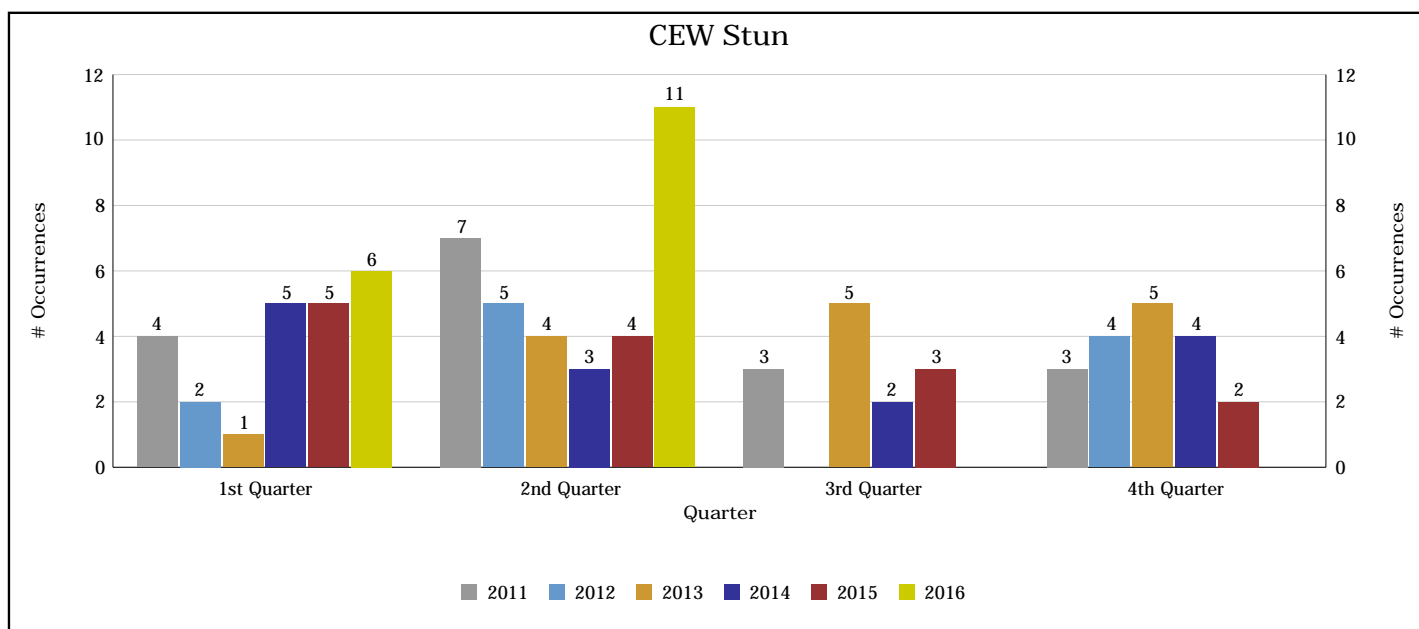


## Control Tactics Reports Use of Force Quarterly Report 2016 Jun

Report Source:  
EPROS Control Tactics  
Run By: Larry Snidal



"Probes" refers to when 2 barbed probes are discharged from the CEW cartridge at a suspect.



"Stun" refers to when the CEW is deployed directly against the subject as a pain compliance technique.

This also encompasses a situation where there may be more than one deployment (ie. Presence is ineffective, with Probes subsequently deployed).

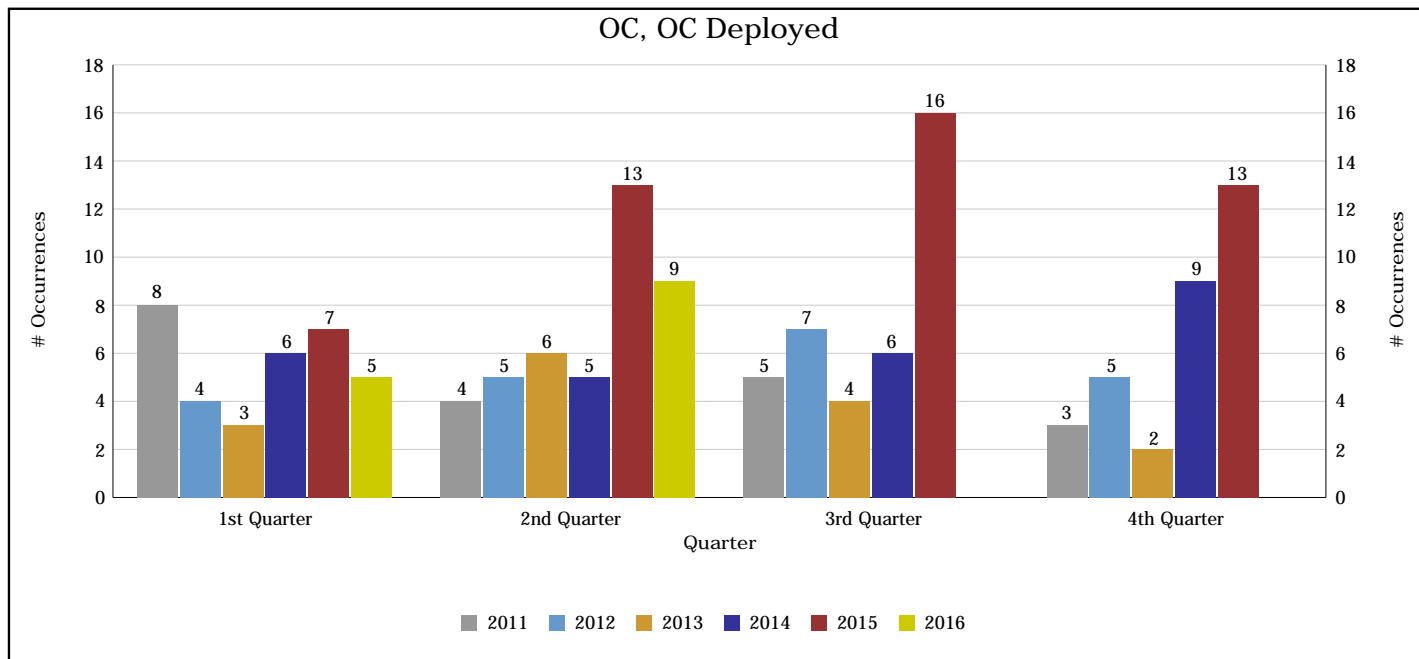


## Control Tactics Reports Use of Force Quarterly Report 2016 Jun

Report Source:  
EPROS Control Tactics  
Run By: Larry Snidal

Geographic Division: City Wide      District: All Districts  
Report Type: Person and Tactical Entry Team  
Based on Occurrence Reported Date

Information as at Date:  
28 Jul 2016 23:59



OC Spray is classified as an Intermediate Weapon



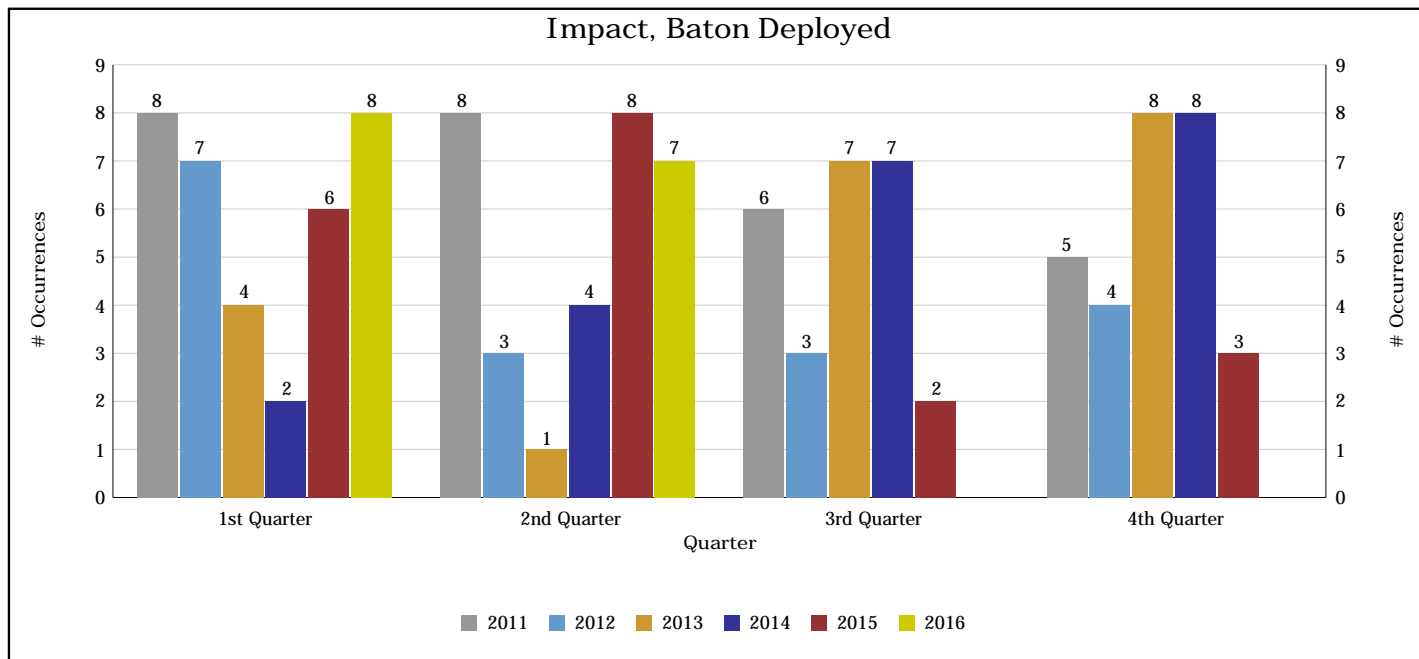


## Control Tactics Reports Use of Force Quarterly Report 2016 Jun

Report Source:  
EPROS Control Tactics  
Run By: Larry Snidal

Geographic Division: City Wide      District: All Districts  
Report Type: Person and Tactical Entry Team  
Based on Occurrence Reported Date

Information as at Date:  
28 Jul 2016 23:59



Batons are classified as an Intermediate Weapon

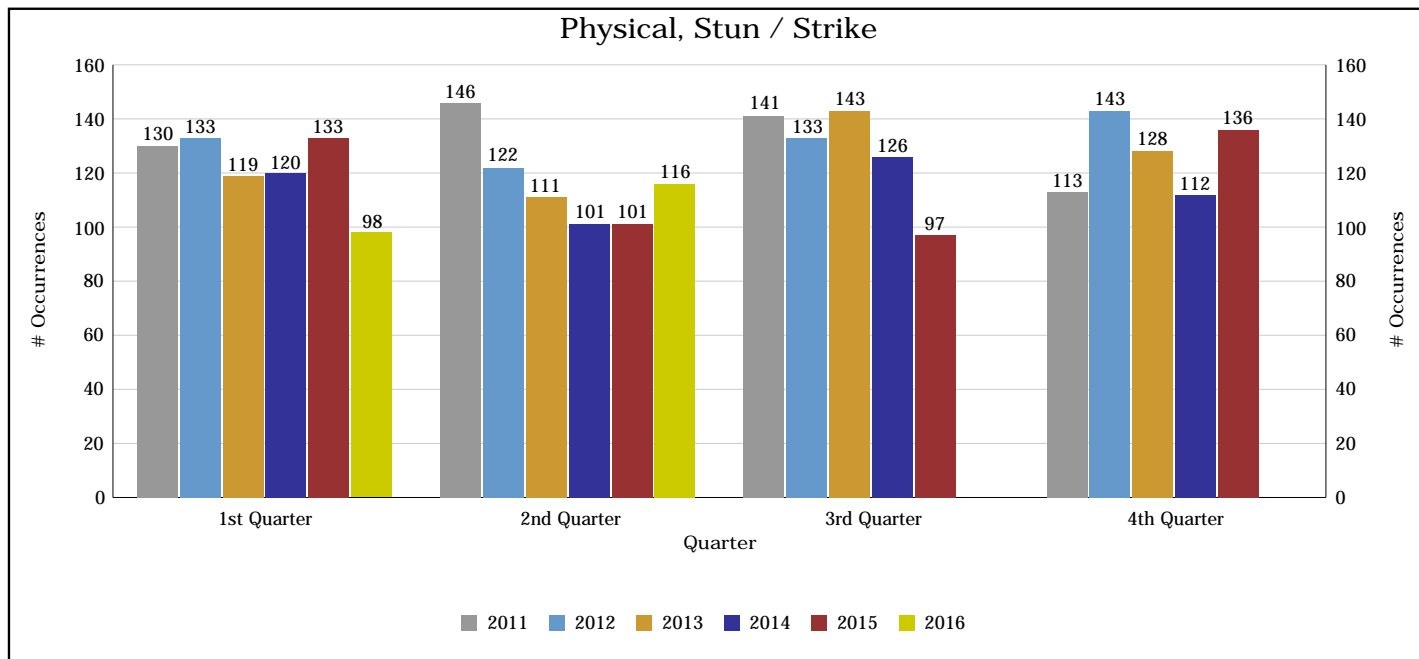


## Control Tactics Reports Use of Force Quarterly Report 2016 Jun

Report Source:  
EPROS Control Tactics  
Run By: Larry Snidal

Geographic Division: City Wide      District: All Districts  
Report Type: Person and Tactical Entry Team  
Based on Occurrence Reported Date

Information as at Date:  
28 Jul 2016 23:59



"Stunning" refers to a technique that temporarily distracts a suspect during the attempt of gaining physical control; open hand strike and a knee strike. For the purposes of this report Stuns and Strikes are combined

"Strike" refers to the following: punch, kick, elbow, and knee strikes.

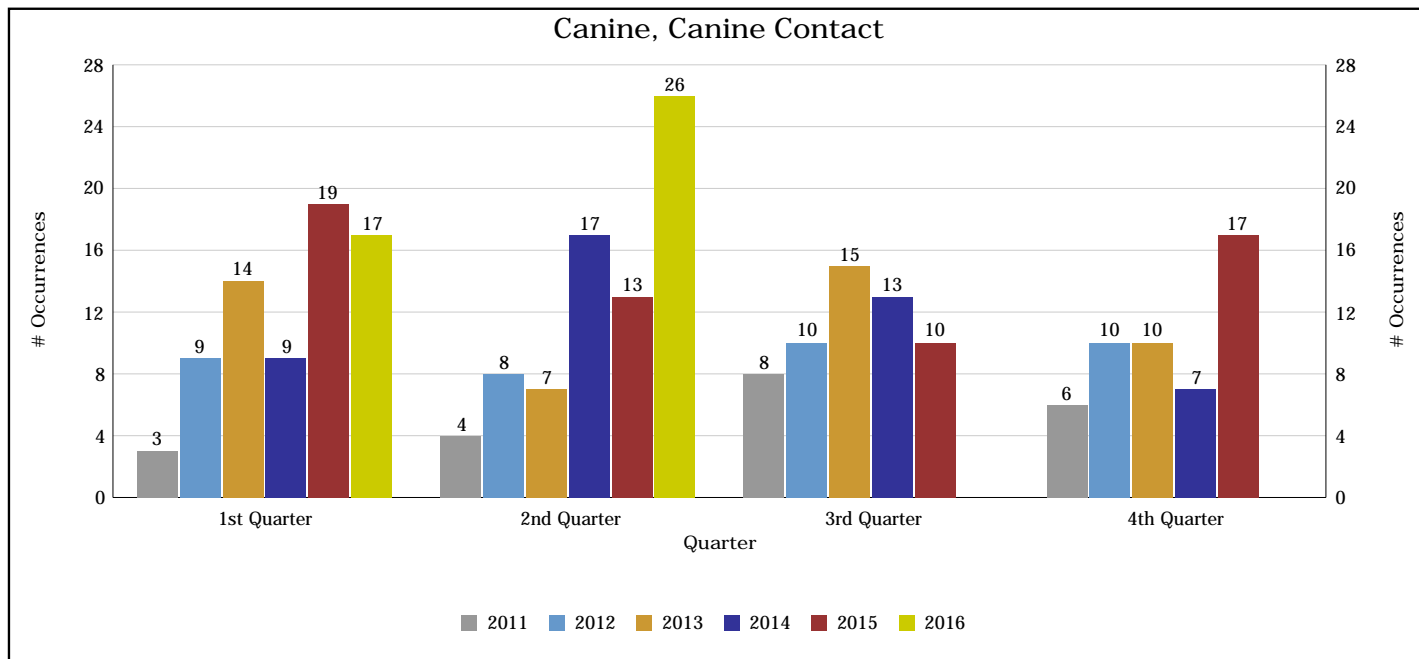


## Control Tactics Reports Use of Force Quarterly Report 2016 Jun

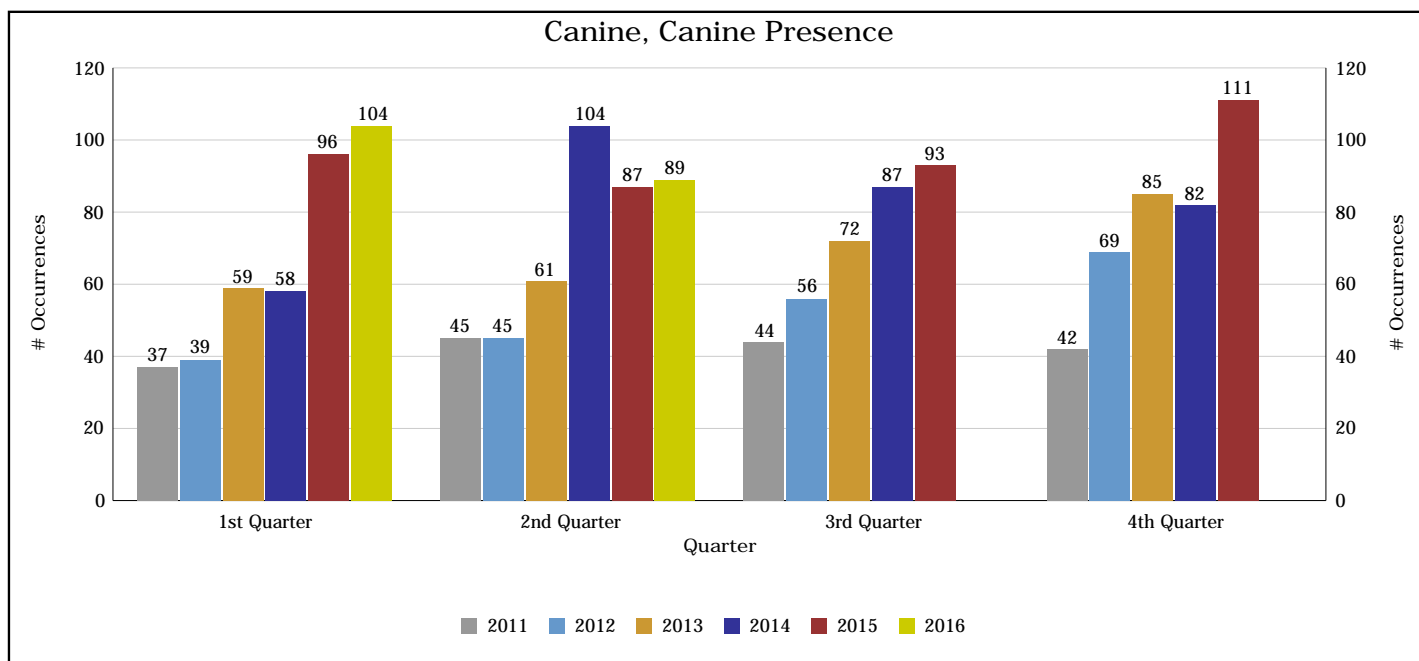
Report Source:  
EPROS Control Tactics  
Run By: Larry Snidal

Geographic Division: City Wide      District: All Districts  
Report Type: Person and Tactical Entry Team  
Based on Occurrence Reported Date

Information as at Date:  
28 Jul 2016 23:59



"Contact" refers to when a Canine Unit successfully apprehends a suspect using physical force by the dog.



"Presence" refers to when a Canine Unit successfully controls a suspect using the presence of the dog.



# Control Tactics Statistics 2016 6 Month Report

Presented for Information  
Edmonton Police Commission  
September 22, 2016

Larry Snidal, Firearms & Ballistics Analyst  
Inspector Dave Christoffel, Professional Development Branch

1



## Control Tactics Report Process

### 2016

128,867 Police Files

1,127 Use of Force Occurrences

**Percentage of Police Files with Use of Force  
Occurrences: 0.875%**

2



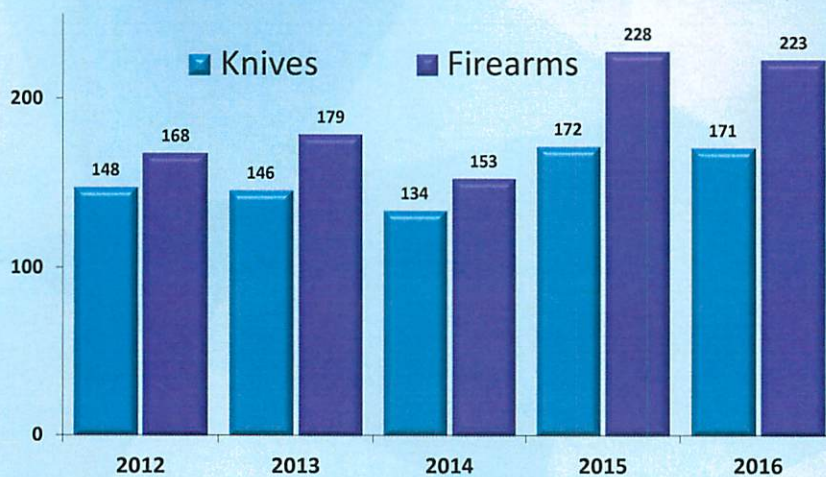
## Total Use of Force Comparison

Jan-Jun	2011	2012	2013	2014	2015	2016	% Change 2015-2016
Use of Force Occurrences	1021	1005	961	993	1175	1127	-4.1%
Control Tactics Reports	1844	1848	1809	1681	2163	2042	-5.6%
Police Files	109,522	108,637	114,735	117,506	124,117	128,867	3.8%

3




## Calls with Weapons Risk



4






## Changes From 2015 (Jan-Jun)

Category	Change (# of Occurrences)	% Change
Police Custodies(Arrests)	2083	10.2%
Police Files	4750	3.8%
Conducted Energy Weapons (CEW) (Probes and/or Stun)	17	68.0%
Canine Contact	11	34.4%
Use of Force Occurrences	-48	-4.1%
Use of Serious Force (Category II)	-24	-5.0%
Strikes and/or Stuns	-20	-8.5%

5



## Conducted Energy Weapons (CEW) / Canine

- CEW usage increased in probe and /or stun mode
  - 25 to 42 occurrences
  - Increased by 17 occurrences
  - All occurrences were subject to review to ensure the use was necessary and appropriate
- Canine contacts increased
  - 32 to 43 occurrences
  - Increased by 11 occurrences
  - 42% of canine contacts are a result of criminal flight

6



# Questions?